



Simply the Best!



• Postal • Transportation • Hospitality • Security • Healthcare • Corporate • Varsity •



- Schools Uniforms and Accessories
- Private Schools
- Public Schools
- Charter Schools



- Aprons
- Chef Coats
- Food Service Attire
- Custom and Specialty Collections



- PPE
- Lab Coats
- Disposable and Reusable Gowns

2022 Catalog

Over 100 Years Manufacturing Experience



Simply the Best!

A 125-Year History

A+ School & Career Apparel
School Uniform & Corporate Apparel Manufacturer ~ Est. 1893

1893

San Francisco

A+ School & Career Apparel traces its roots to the founding of Smith Knitting Mills in San Francisco in 1893. The company's single electric motor drove a series of spring-needle knitting machines via an overhead shaft made of pulleys and leather belts. The 6,000-square-foot mill, located in a residential area and attached to the owner's house, looked more like a garage than a factory.

Smith Knitting Mills produced 100-percent wool sweaters and sold them to local merchants. It also produced a 5-pound wool athletic sweater for local schools and colleges, including Stanford University and the University of California, Berkeley. The athletic sweaters featured sleeve stripes and a chenille school logo.



1933

In 1933, the owner of Smith Knitting Mills retired and sold the business to Harry Shannon and Ruby Johnson, who renamed it Shannon & Johnson Knitwear. The school connection continued under the new owners, who began producing two-ply, 100-percent wool cardigan sweaters for Catholic schools.



1973

The Knoss family purchased Shannon & Johnson Knitwear in 1973, when the business was in decline. Shannon & Johnson had not invested in technology updates; a shaft-and-belt system still drove the knitting and sewing machines, and a potbelly stove fueled by yarn cartons heated the building. The company now sold fewer than 13,000 sweaters a year.

While hundreds of knitting mills still operated in the United States at the time, few were focused on the school sweater market. Choosing to emphasize that differentiation, the Knoss family renamed the company School Apparel, Inc. and began the rebuilding and rebranding process to reflect a broader clothing offering.

1974

The following year, the Knoss family purchased a second company, a manufacturer of skirts, jumpers, and blouses for the school uniform market, and merged the two businesses.



1980

The company grew by focusing on supplying high-quality, easy-care uniforms at a great value and by building a larger inventory to provide faster order fulfillment. In 1980, the family introduced a new career/corporate apparel division, San Francisco Knitting Mills, and expanded their sweater customer base to the United States Postal Service, the U.S. Marine Corps, and the U.S. Navy. The company developed its first fire-retardant sweater for the Navy.

1890

1900

1910

1920

1930

1940

1950

1960

1970

1980

1990

2000

2010

2020



1984

Star City, Arkansas

As sales grew regionally and nationally, School Apparel, Inc. began to run out of space. In addition, the San Francisco location was far from raw material suppliers and increasingly expensive to operate. In 1984, the company purchased a former Levi Strauss & Co. factory in Star City, Arkansas, and moved production there. The facility's central location provided better access to materials and a better position from which to ship throughout the U.S.

Mid-1990s

In the mid-1990s, the company renamed its two divisions A+ School Apparel and A+ Career Apparel, and introduced its One-Year Wear-Tested™ Guarantee for all products. In collaboration with the U.S. Postal Service, Monsanto, and a yarn supplier, A+ also developed a proprietary low-pill yarn branded as Pil-trol. The yarn was specified for USPS sweaters, and Monsanto backed the sweater guarantee.

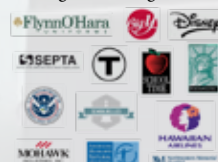


2019

A+ is now the oldest sweater mill in the U.S. At its vertically integrated facility in Arkansas, A+ produces a variety of garments, including what the owners call "the finest sweaters with the finest yarns by the finest people in the world." This 225,000-square-foot location includes state-of-the-art manufacturing, warehousing, and distribution facilities.

The company also has strong partnerships with producers in the Dominican Republic, Mexico, Thailand, and elsewhere, as needed, who manufacture a wide range of woven and knit tops, bottoms, and other apparel products.

A+ has the largest in-stock product offering in the niche uniform market, supplying uniforms to school dealers and corporate uniforms for industries such as transit and transportation, public safety and security, hospitality, aviation, and healthcare, to name a few. Orders ship to customers and distribution partners within eight business hours. Clients who choose the A+ brand include the following notable organizations:



Thank you for trusting A+ to provide the best apparel solutions for your everyday needs. We love what we do, and we prove it through exceptional customer care and superior heart-crafted goods.



CAREER APPAREL

PROGRAM SOLUTIONS 4-11

Transportation	4
Public Safety	6
Hospitality	8
Healthcare	10

SWEATERS 12-23

Fine Gauge	12
Jersey	14
Heavyweight	20

WOVEN SHIRTS 24-31

Hospitality	24
Poplin	28
Aviator	29
Oxford	30-31

KNIT SHIRTS 32-35

PERFORMANCE Dry-Fit	32
Piqué	33
Turtleneck	34
Jersey	35

PERFORMANCE WEAR 36-37

Jackets & Fleece	36
Sweatshirts	37

PANTS & SHORTS 38-44

Hospitality	38
Modern Fit	39
Cargo	40
Relaxed Fit	42
Classic Fit	44



School Apparel

SCHOOL APPAREL 45-47

Heart-crafted with Care	45
Last Impressions	46
1-Year Wear-Test™ Guarantee	47

KNIT SHIRTS 48-53

Piqué	48-49
Jersey & Interlock	50-51
Female Knits & Dress	52-53

SWEATERS 54-57

Fine Gauge	54
Varsity	55
Jersey	56-57

GIRLS WEAR 58-63

Swatches	58-59
Jumpers	60
Skirts & Kilt	61
Skorts	62-63

PANTS & SHORTS 64-71

Pull-On	64
Bike Shorts & Leggings	65
Girls Pants & Shorts	66-67
Boys Pants & Shorts	68-71

WOVEN SHIRTS 72-77

Boy's Oxfords	72-73
Girl's Poplin & Oxfords	74-75
Broadcloth Peter Pan	76
Broadcloth Classic Collar	77

ACTIVEWEAR 78-81

Fleece Tops	78-80
Pants and Shorts	81

OUTERWEAR & BLAZERS 82-83

Jackets	82
Blazers	83

SOCKS & TIGHTS 84-85

Socks	84
Tights	85



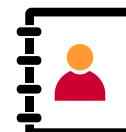
CAYSON 86-89

Chef Coat	86-87
Apron	88
Vest	89



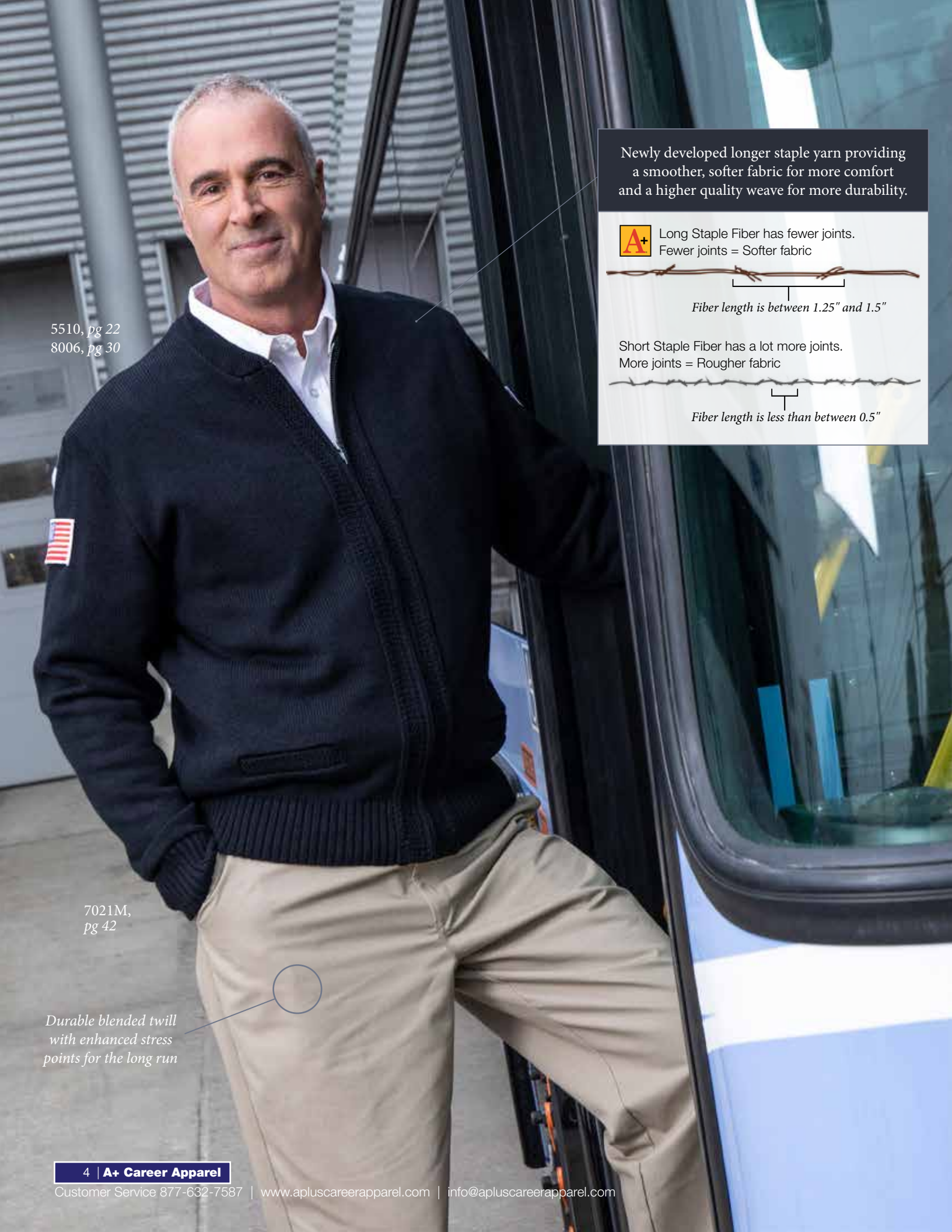
MEDICA+ 90-91

Disposable Gown	90
ReUSABLe Gown	91
Lab Coat	91



COMPANY INFORMATION 92-100

Territory	92
Services	93
Why A+	94-95
How to Measure	96-99
Company Information	100



5510, pg 22
8006, pg 30

7021M,
pg 42

Durable blended twill
with enhanced stress
points for the long run

Newly developed longer staple yarn providing
a smoother, softer fabric for more comfort
and a higher quality weave for more durability.



Long Staple Fiber has fewer joints.
Fewer joints = Softer fabric



Fiber length is between 1.25" and 1.5"

Short Staple Fiber has a lot more joints.
More joints = Rougher fabric



Fiber length is less than 0.5"

TRANSPORTATION

Miles of Comfort

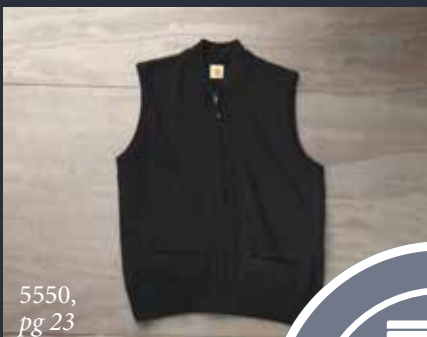
Soft yet rugged, these heavyweight sweaters withstand tough treatment.



Sharp, classic uniform options that keep you comfortable and in full command of the day.

Get the timeless look you want with our cardigans.

6300,
pg 16



8137,
pg 30



Wardrobe classics: easy-wearing, well-tailored oxford shirts.

7021M,
pg 42



Wear-tested trousers: comfort in a variety of workplace styles.

PUBLIC SAFETY In Command

Functional durability with performance-focused styling to keep you maneuvering at your best in every situation.

Aviator shirts are a wardrobe staple in security, transit, and parking industries.



Turtleneck or mock, these welcoming knits keep you warm when winter's chill sets in.

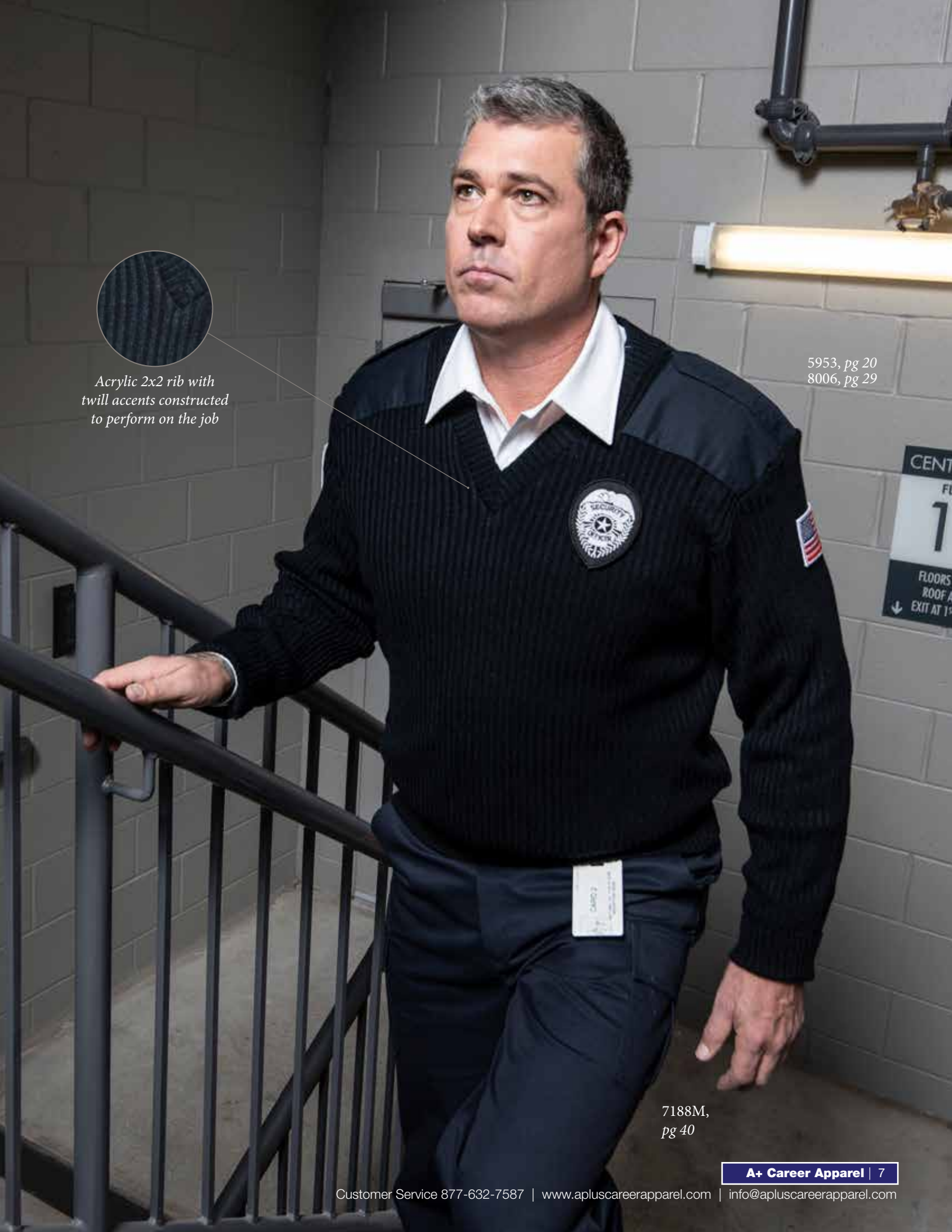


Our Commando sweaters: the #1 choice for law enforcement and emergency pros.



*Acrylic 2x2 rib with
twill accents constructed
to perform on the job*

5953, pg 20
8006, pg 29



7188M,
pg 40



*Covered placket and
dyed-to-match buttons for
a professional appearance*

*Modern styling with stain,
fade, shrink and
wrinkle resistant performance*

8208,
pg 26

7917M,
pg 38

HOSPITALITY

Service a Step Above

The right amount of warmth with our assortment of sweater weights.



Modern styling with a modest attitude keeps you looking and feeling confident and approachable.

Stand up or spread collar options: premium quality and comfort for fast-paced environments



Our hospitality pants come with or without pockets and offer gripper trimmed waist bands to keep shirts tucked in and professional.

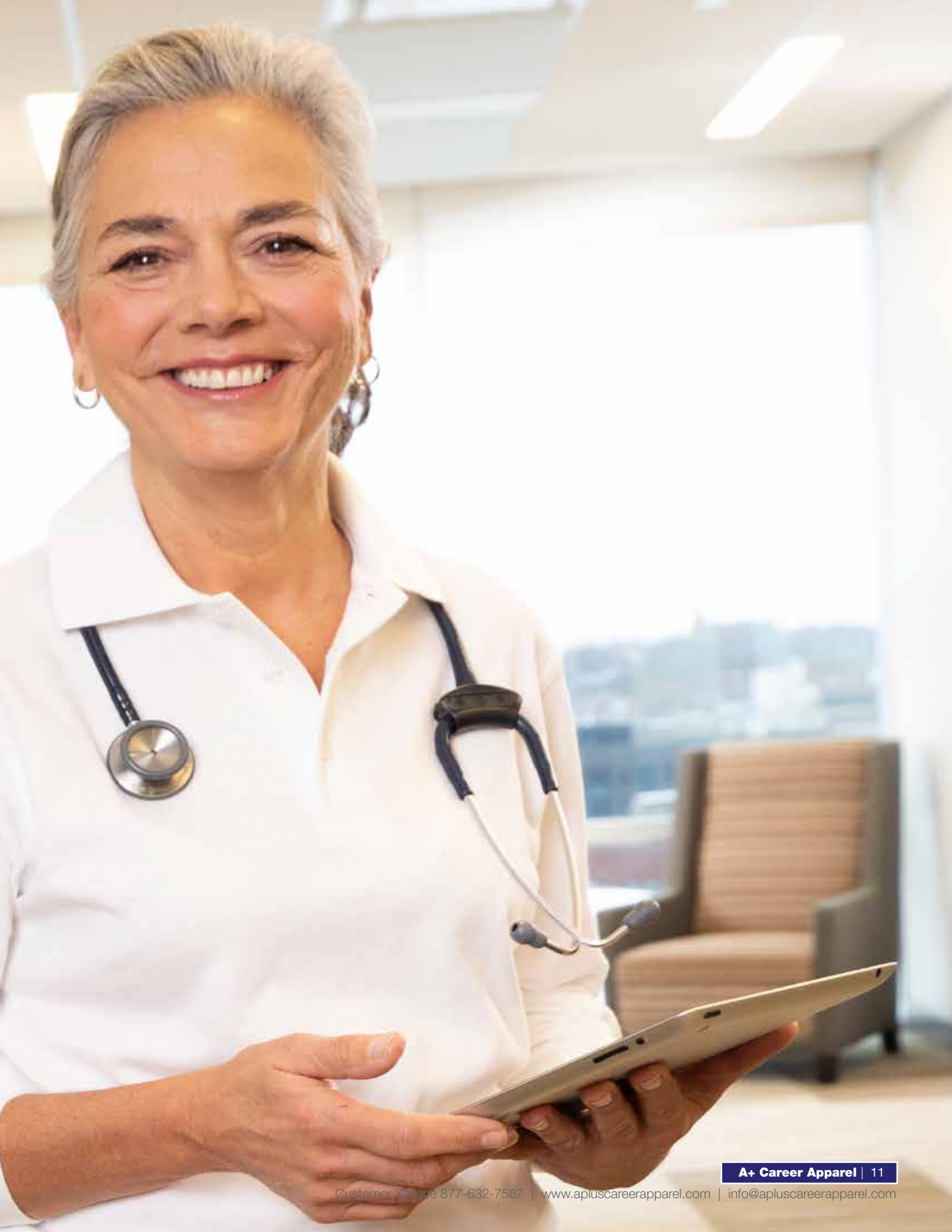


With A+ apparel, you get it all — crisp, consistent colors, versatile sizing, easy-care construction, and guaranteed quality.

Dependable Care

In the exam room or office our styles compliment your profession and promote a sense of calmness and trust to those you help. Would you have it any other way?







4917

4915

Layers That Last

Our soft, resilient sweaters offer easy warmth with professional style



A+ Performance Fine-Gauge Sweaters:

- **Guaranteed quality**
- A+ Fabrics: 100% acrylic
- Half-milano knit
- Stain, fade, shrink, and pill resistant
- Soft to the touch
- Perfect year-round weight
- Easy care: machine wash and dry

4917 Women's Fine-Gauge 8-Button Crewneck Cardigan

- Falls below waist
- Rib-knit cuffs and waist

Colors: Black, Lipstick, Navy, Passion Pink
Sizes: S-5XL

4915 Women's Fine-Gauge 7-Button Tunic-Length V-Neck Cardigan

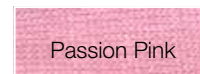
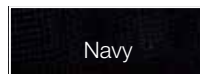
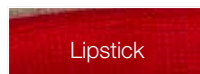
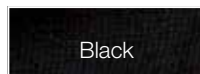
- Side vents
 - 2 patch pockets
- Colors: Black, Navy
Sizes: S-5XL

6432 Men's Fine-Gauge V-Neck Pullover Sweater

Colors: Black, Navy
Sizes: S-5XL

6430 Women's Fine-Gauge 5-Button V-Neck Cardigan

- Pairs with #4918 to make a twinset
 - Falls below waist
- Colors: Black, Navy
Sizes: S-5XL



6600

Grey Heather

White

Wine

Charcoal Heather

Powder Blue

Lipstick

Navy

Mulberry

Spruce Green

Purple

Mayfair

Cardinal

Brown

Green

Black

**A+ Performance
Jersey Knit
Sweaters:**

- **Guaranteed quality**
- A+ Fabrics:
100% acrylic
- Stain, fade,
shrink, and pill
resistant
- Elasticized rib-knit
waist for shape
retention
- Easy care:
machine wash
and dry

**6600 Unisex Jersey
Knit V-Neck Pullover
Sweater Vest**

Colors: Black, Cardinal,
Green, Grey Heather, Lipstick,
Navy, Purple, Wine
Sizes: S-5XL

**6500 Unisex Jersey Knit
V-Neck Pullover Sweater**

Colors: Black, Cardinal,
Green, Grey Heather, Lipstick,
Navy, Purple, Wine
Sizes: S-5XL

**6530 Unisex Jersey
Knit Crewneck
Pullover Sweater**

Colors: Black, Lipstick,
Navy, Wine
Sizes: S-5XL





6300

6745

A+ Performance Jersey Knit Sweaters:

- **Guaranteed quality**
- A+ Fabrics: 100% acrylic
- Stain, fade, shrink, and pill resistant
- Elasticized rib-knit cuffs for shape retention
- Dyed-to-match buttons
- Easy care: machine wash and dry

6300 Unisex Jersey Knit 5-Button V-Neck Pocket Cardigan

- 2 large pockets
 - Hemmed bottom band
- Colors: Black, Brown, Cardinal, Charcoal Heather, Green, Grey Heather, Kelly Green, Khaki, Lipstick, Mayfair, Nally Powder Blue, Navy, **New Color: Old Gold**, Passion Pink, Purple, Reflex Blue, **New Color: Superior Gold**, White, Wine
- Sizes: S-5XL

6745 Unisex Jersey Knit 5-Button V-Neck Cardigan

Colors: Black, Lipstick, Navy, Wine

Sizes: S-5XL

6000 Women's Jersey Knit 7-Button Crewneck Cardigan

Colors: Black, Cardinal, Grey Heather, Lipstick, Navy, White, Wine

Sizes: S-5XL

Black	Brown	Cardinal
Charcoal Heather	Green	Grey Heather
Kelly Green	Khaki	Lipstick
Mayfair	Mulberry	Navy
Old Gold	Passion Pink	Nally Powder Blue
Purple	Reflex Blue	Spruce Green
Superior Gold	White	Wine

6000



6340

Varsity sweaters
are available in dozens of
**CUSTOM COLOR
COMBINATIONS**
Contact your Sales
Rep for details

A+ Performance Varsity Sweaters:

- **Guaranteed quality**
- A+ Fabrics: 100% acrylic
- Stain, fade, shrink, and pill resistant
- Easy care: machine wash and dry

6340 Unisex 5-Button V-Neck Varsity Pocket Cardigan

- 2 welt pockets
- 3 stripes on upper left sleeve
- Contrasting trim

Body Color / Trim Color:

Black / Old Gold

New Color: Black / White

New Color: Brown / Old Gold

Cardinal / Cream

New Color: Charcoal Heather / Black

Lipstick / White

Navy / White

New Color: Orange / White

Passion Pink / Kelley Green

Purple / Old Gold

New Color: Reflex Blue / Superior Gold

Reflex Blue / White

Sizes: S-3XL

Body Color	Trim Color
Black	Old Gold
Black	White
Brown	Old Gold
Cardinal	Cream
Charcoal Heather	Black
Lipstick	White
Navy	White
Orange	White
Passion Pink	Kelly Green
Purple	Old Gold
Reflex Blue	Superior Gold
Reflex Blue	White

3461 Unisex 5-Button V-Neck Varsity Cardigan

- 3 stripes on upper left sleeve
- Body Color / Trim Color:
Navy / White
Sizes: S-3XL



More color combinations available.



5953

5955



If any garment
does not stand
up to one year
of normal wear,
we'll replace it.
It's that simple.

5977

A+ Performance Commando Sweaters:

- **Guaranteed quality**
- A+ Fabrics: 100% acrylic and wool-blend options
- Stain, fade, shrink, and pill resistant
- Top choice for law enforcement and emergency professionals
- Easy care: machine wash and dry
- Nameplate tab and badge tab included

5953 Unisex 2x2 Heavy Rib V-Neck Commando Sweater

- 100% acrylic
- Elasticized cuffs and waist for shape retention
- Twill epaulets, shoulder patches, and elbow patches

Colors: Black, Brown, Police Navy

Sizes: S-5XL

5955 Unisex Jersey V-Neck Commando Sweater

- 100% acrylic
- Elasticized cuffs and waist for shape retention
- Twill epaulets, shoulder patches, and elbow patches

Colors: Black, Police Navy

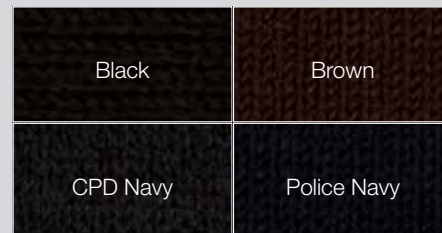
Sizes: S-5XL

5977 Unisex Fleece-Lined Zip-Front V-Neck Commando Cardigan

- Body: 57% polyester, 28% worsted wool, 15% acrylic
- Bonded fleece lining: 100% polyester
- Shoulder and elbow patches: 100% CORDURA® nylon
- Easy-pull zipper
- 2 microphone tabs, and 2 epaulets included
- 2 pockets

Colors: Black, Police Navy (*closeout color*)

Sizes: S-5XL



Commando Sweater Accessories:

5420 Badge Tab, 5430 Nameplate Tab

- 65% polyester, 35% cotton
- Can be applied to any Commando or Transit sweater to hold a nameplate or badge

Colors: Black, Brown, CPD Navy

Size: 1 size

Style and Comfort

Resilient sweaters offer easy warmth with professional style

5510



5600



A+ Heavyweight Transit Sweaters:

- **Guaranteed quality**
- A+ Fabrics: 100% acrylic
- Jersey knit
- Stain, fade, shrink, and pill resistant
- Elasticized cuffs and waist for shape retention
- Easy care: machine wash and dry

5510 Unisex Heavyweight Zip-Front Crewneck Transit Cardigan

- Full-length easy-pull zipper
- 2 pockets
- Rack-stitch border
- Self-Inside Elbow Patches

Colors: Black, Brown, Navy

Sizes: S-5XL

5600 Unisex Heavyweight 5-Button V-Neck Transit Cardigan

- 2 welt pockets
- Rib-knit cuffs

Colors: Black, Navy

Sizes: S-5XL

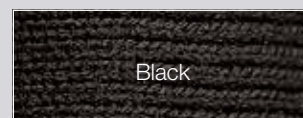
5550 Unisex Heavyweight Zip-Front Crewneck Transit Sweater Vest

- 2 welt pockets
- Rack-stitch border

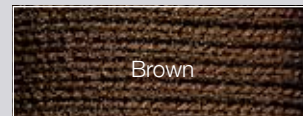
Color: Black, Brown, Navy

Sizes: S-5XL

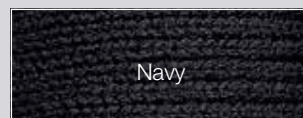
5550



Black



Brown



Navy

9212

8211

Form and Function

Wrinkle-free wovens: ease and utility without sacrificing style

A+ Performance Hospitality Shirts:

- **Guaranteed quality**
- A+ Fabrics: 100% fourth-generation polyester microfiber
- 4.0 oz. moisture-wicking polyester
- Stain, fade, and shrink resistant
- Wrinkle free
- Single-needle tailoring
- Covered button placket
- Dyed-to-match buttons
- Easy care: machine wash and dry

9212 Women's Hospitality Camp Shirt, Spread Collar

- Bust darts
- Single-welt chest pocket

Colors: Black, Buff, Celery, Charcoal,
Cobalt Blue, Red

Women's Sizes: XS-5XL

Men's Sizes: Regular XXS-5XL; Tall L-5XL

8211 Men's Hospitality Camp Shirt, Spread Collar

- Single-welt chest pocket

Colors: Black, Charcoal,
Cobalt Blue, Red

Women's Sizes: XS-5XL

Men's Sizes: Regular XXS-5XL; Tall L-5XL

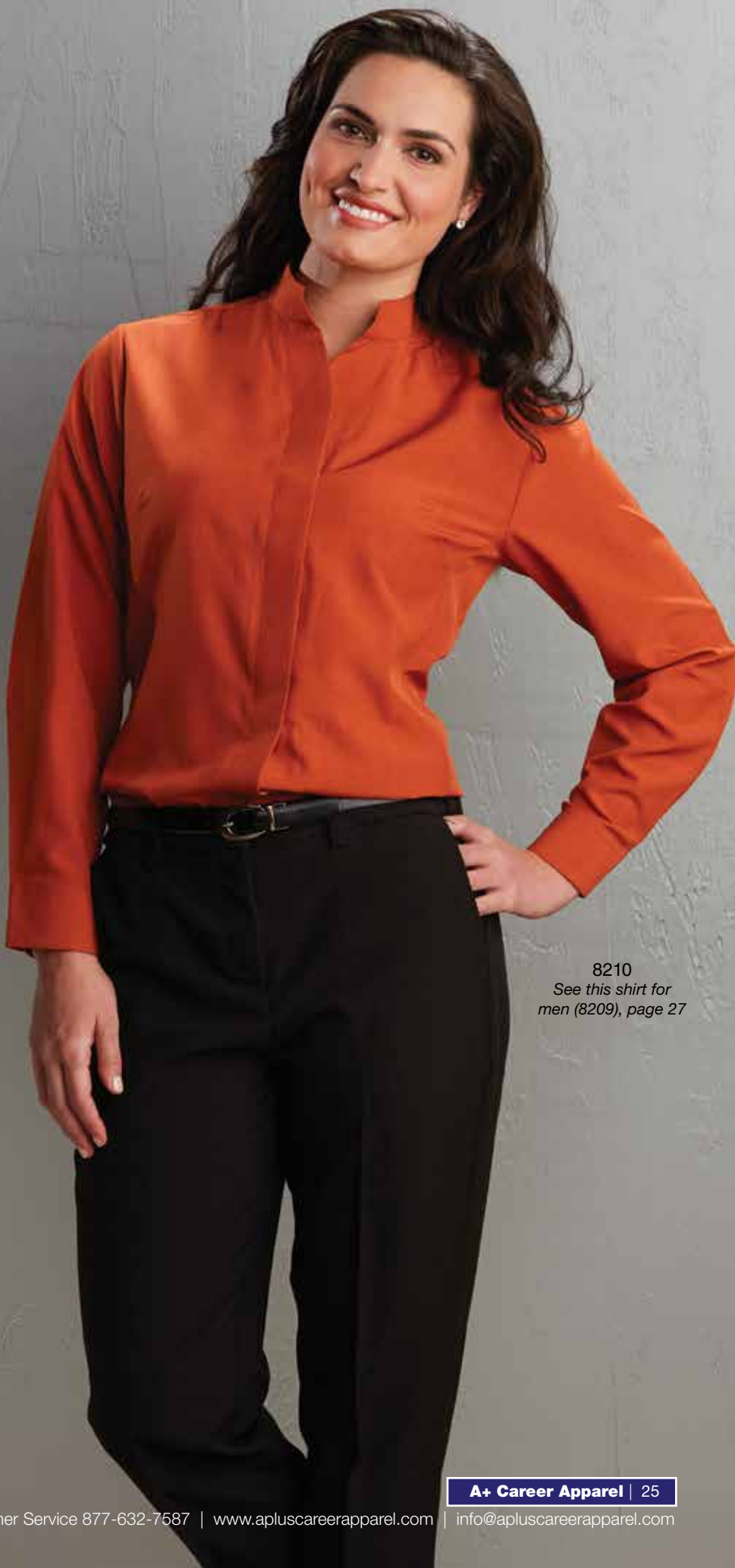
8210 Women's Hospitality Shirt, Stand-Up Collar

- Open neck for comfort
- Relaxed fit

Colors: Black, Charcoal, Cobalt Blue,
Red, Rust, Wheat, Wine

Sizes: XXS-4XL

Black	Buff
Celery	Charcoal
Chocolate	Cobalt Blue
Red	Rust
Wheat	Wine



8210

See this shirt for
men (8209), page 27

A man and a woman are standing side-by-side against a light-colored, textured wall. The man on the left is wearing an orange long-sleeved button-down shirt and black trousers with a black belt. The woman on the right is wearing a blue long-sleeved button-down shirt and black trousers with a black belt. Both are smiling at the camera.

8207

8208

Cobalt Blue

Wine

Charcoal

Wheat

White

Silver

Rust

Chocolate

Red

Black

A+ Performance Hospitality Shirts:

- **Guaranteed quality**
- A+ Fabrics: 100% fourth-generation polyester microfiber
- 4.0 oz. moisture-wicking polyester
- Stain, fade, and shrink resistant
- Wrinkle free
- Single-needle tailoring
- Covered button placket
- Dyed-to-match buttons
- Adjustable two-button cuffs
- Easy care: machine wash and dry

8207 Men's Hospitality Shirt, Pointed Collar

- Permanent collar stays
- Colors: Black, Charcoal, Cobalt Blue, Red, Rust, Silver, Wheat, White, Wine
- Women's Sizes: XXS-4XL
- Men's Sizes: Regular XXS-5XL; Tall L-5XL

8208 Women's Hospitality Blouse, Pointed Collar

- Permanent collar stays
- Colors: Black, Charcoal, Cobalt Blue, Red, Rust, Silver, Wheat, White, Wine
- Women's Sizes: XXS-4XL
- Men's Sizes: Regular XXS-5XL; Tall L-5XL

8209 Men's Hospitality Shirt, Stand-Up Collar

- Open neck for comfort
 - Relaxed fit
 - Badge tab on left chest
- Colors: Black, Charcoal, Cobalt Blue, Red, Rust, Wheat, Wine
- Sizes: Regular XXS-5XL; Tall L-5XL



8209

See this shirt for women
(8210), page 25

A+ Performance

Poplin Shirts:

- **Guaranteed quality**
- A+ Fabrics: 65% polyester, 35% cotton
- 4.25 oz. poplin
- Stain, fade, and shrink resistant
- Wrinkle free
- Generous cut
- Full single-needle tailoring
- Double-yoke back with center box-pleat for comfort
- Left chest pocket
- Wood-tone buttons
- Easy care: machine wash and dry
- Also suitable for industrial laundry (IL)

9431 Women's Short-Sleeve

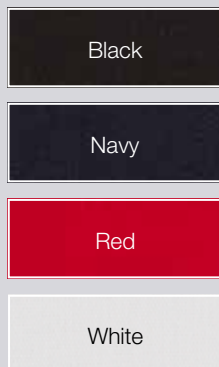
Poplin Blouse

- Adjustable double-button barrel cuffs

Colors: Black, Navy, Red, White

Sizes: S-3XL

9431





8006

8002

A+ Performance Aviator Shirts:

- **Guaranteed quality**
- Stain, fade, and shrink resistant
- Wrinkle free
- Pointed collar
- 2 epaulets
- Pencil/pen openings on pocket flaps
- Double-yoke back with center box-pleat for comfort
- Adjustable double-button barrel cuffs with pearl-style buttons
- Perfect for the airline, security, transit, and cruise ship industries
- Easy care: machine wash and dry
- Also suitable for industrial laundry (IL)

8002 Men's Poplin Short-Sleeve Aviator Shirt

- A+ Fabrics: 65% polyester, 35% cotton
 - 4.25 oz. poplin
 - Pleated chest pockets with button flaps
- Colors: Blue, White
Sizes: XS-5XL

8006 Men's Poplin Long-Sleeve Aviator Shirt

- A+ Fabrics: 65% polyester, 35% cotton
 - 4.25 oz. poplin
 - Pleated chest pockets with button flaps
- Colors: Blue, White
Sizes: XS-5XL

A+ Performance Oxford Shirts:

· **Guaranteed quality**

- A+ Fabrics: 60% cotton, 40% polyester - 4.6 oz. oxford cloth
- Wrinkle free
- Stain, fade, and shrink resistant
- Full single-needle tailoring
- Left chest pocket
- Generous shoulders and armholes for comfort and ease of movement
- Easy care: machine wash and dry
- Also suitable for industrial laundry (IL)



Neck Comfort

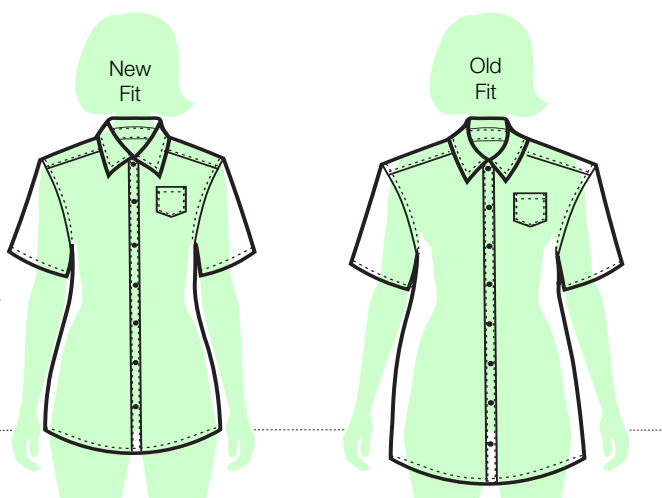
- Bigger Neck
- Smaller Collar Width
- Smaller Collar Point

Tailor Fit

- Fitted Body Width
- Fitted Shoulder-to-Shoulder
- Smaller Arm Hole
- Smaller Sleeve Opening

Modern Length

- Shorter Body Length
- Shorter Yoke



9503

NEW 9503 Women's Short-Sleeve Oxford Blouse

Colors: Blue, White, Yellow

Sizes: XS-5XL



Neck Comfort

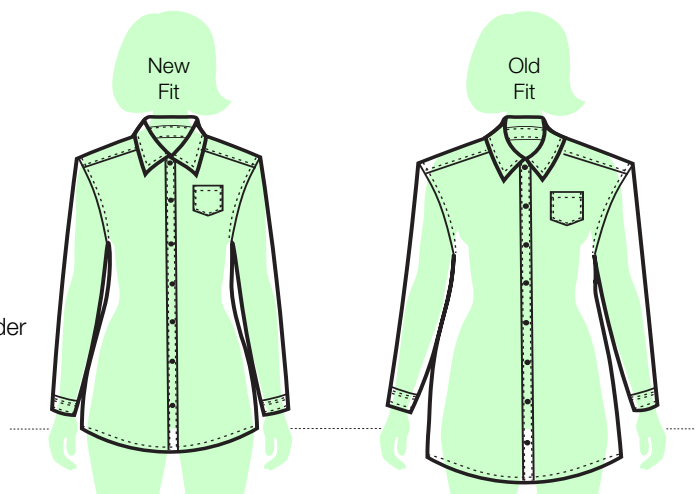
- Bigger Neck
- Smaller Collar Width
- Smaller Collar Point

Tailor Fit

- Fitted Body Width
- Fitted Shoulder-to-Shoulder
- Smaller Arm Hole

Modern Length

- Shorter Body Length
- Longer Sleeve Length
- Shorter Vent



9506

NEW 9506 Women's Long-Sleeve Oxford Blouse

- Adjustable double-button barrel cuffs

Colors: Blue, White, Yellow

Sizes: XS-5XL



Neck Comfort

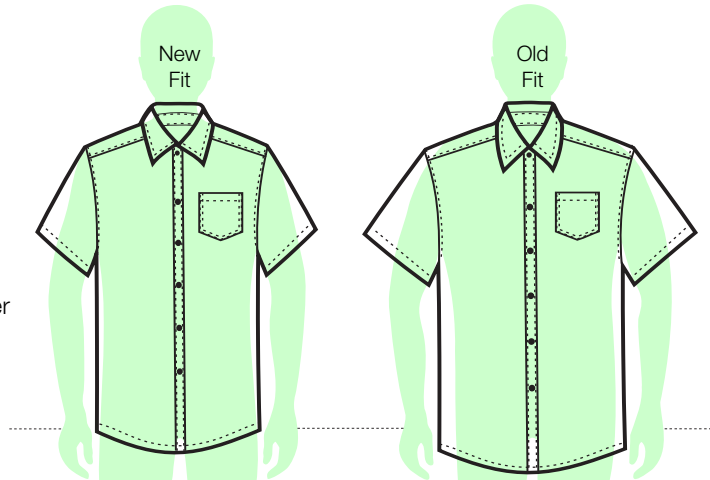
- Bigger Neck
- Smaller Collar Width
- Smaller Collar Point

Tailor Fit

- Fitted Body Width
- Fitted Shoulder-to-Shoulder
- Smaller Arm Hole
- Smaller Sleeve Opening

Modern Length

- Shorter Body Length
- Shorter Yoke



8135

NEW 8135 Men's Short-Sleeve Oxford Shirt

Colors: Blue, White, Yellow

Please inquire with your Sales Rep about the availability for Blue Pinstripe.

Tall L-5XL (Blue and White only)



Neck Comfort

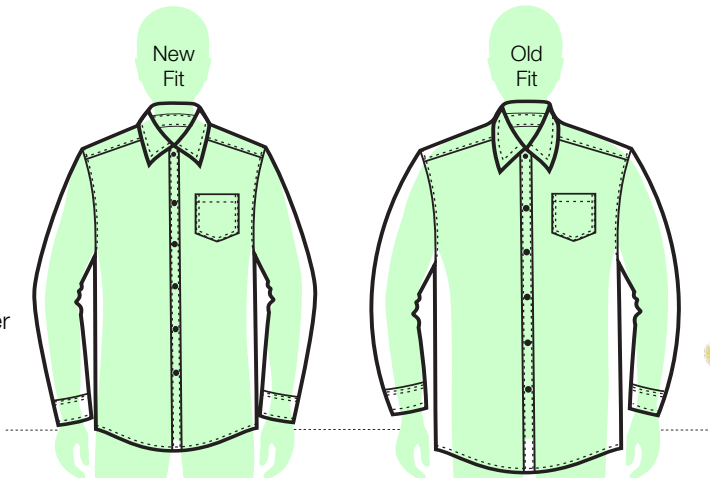
- Bigger Neck
- Smaller Collar Width
- Smaller Collar Point

Tailor Fit

- Fitted Body Width
- Fitted Shoulder-to-Shoulder
- Smaller Arm Hole

Modern Length

- Shorter Body Length
- Longer Sleeve Length
- Shorter Vent



8137

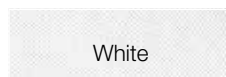
NEW 8137 Men's Long-Sleeve Oxford Shirt

- Adjustable double-button barrel cuffs

Colors: Blue, White, Yellow

Sizes: Regular S-5XL

Tall L-5XL (Blue and White only)



Blue

Blue Pinstripe

White

Yellow

A+ Performance Moisture-Management Polo Shirts:

- **Guaranteed quality**
- Snag resistant
- Stain, fade, and shrink resistant
- Wrinkle free
- Easy care: machine wash and dry

NEW 9739 5 oz. Moisture Wicking Jersey Knit Polo Shirt (Female)

- 2 button placket
 - side vents
 - rib knit cuffs
 - short cap sleeve
 - PERFORMANCE Dry-Fit 100% polyester
- Colors: Black, Blue, Bright Navy, Dark Green, Dark Royal, Purple, Red, White, Wine
Sizes: S-3XL

NEW 9735 Pique Short Sleeve Polo Shirt (Female)

- 2 button placket
 - side vents
 - rib knit cuffs
 - short cap sleeve
 - 60% cotton / 40% polyester
- Colors: Ash Grey, Black, Blue, Bright Navy, Dark Green, Dark Navy, Dark Royal, Navy, Red, Tulane Purple, White, Wine, Yellow
Sizes: S-3XL

NEW 9737 Interlock Short Sleeve Polo Shirt (Female)

- 2 button placket
 - side vents
 - rib knit cuffs
 - short cap sleeve
 - 60% cotton / 40% polyester
- Color: White
Sizes: S-3XL

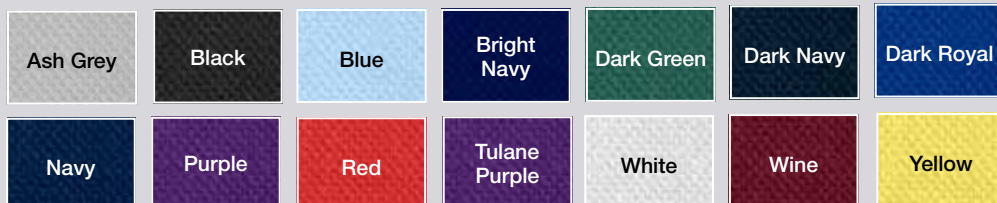
9739



9735



9737



A+ Performance Piqué Polo Shirts:

- **Guaranteed quality**
- A+ Fabrics: 60% combed ring-spun cotton, 40% polyester
- 7.0 oz. fabric for white, 6.4 oz. fabric for colors
- Stain, fade, and shrink resistant
- Wrinkle free
- Rib-knit collar
- Hemmed bottom
- Easy care: machine wash and dry



NEW 9735 Women's Piqué Polo Shirt

- Short sleeves, rib-knit cuffs
- Narrow 4-button placket
- Side vents

Colors: Black, Blue, Dark Green, Navy, Red, White, Wine, Yellow

Sizes: S-3XL

8760 Men's/Unisex Piqué Polo Shirt, Short Sleeves, Hemmed

Colors: Ash Grey, Black, Blue, Dark Green, Dark Navy, Khaki, Red, Tulane Jade, Tulane Kelly Green, White, Wine

Sizes: S-5XL

8780 Men's/Unisex Piqué Polo Shirt with Pocket, Short Sleeves, Hemmed

Colors: Ash Grey, Black, Red, White

Sizes: S-5XL

8761 Men's/Unisex Piqué Polo Shirt, Short Sleeves, Rib-Knit Cuffs

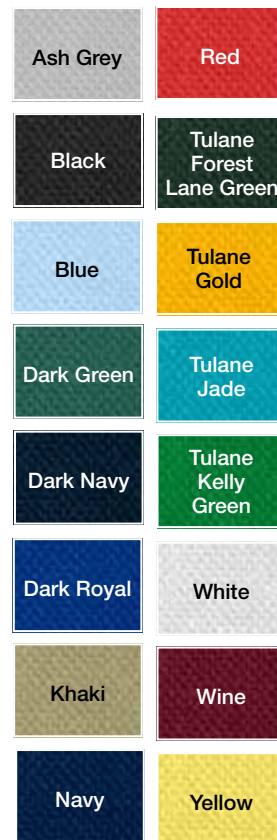
Colors: Ash Grey, Black, Dark Green, Dark Navy, Dark Royal, Khaki, Red, Tulane Forest Lane Green, Tulane Gold, White

Sizes: S-5XL

8766 Men's/Unisex Piqué Polo Shirt, Long Sleeves, Rib-Knit Cuffs

Colors: Ash Grey, Black, Dark Green, Dark Navy, Dark Royal, Khaki, Red, Tulane Gold, White

Sizes: S-5XL





A+ Performance Jersey Knit Shirts:

- **Guaranteed quality**
- A+ Fabrics: 60% combed ring-spun cotton, 40% polyester
- 6.9 oz. fabric for white, 6.4 oz. fabric for colors
- Stain, fade, and shrink resistant
- Wrinkle free
- Easy care: machine wash and dry

8103 Unisex Jersey Knit Mock Turtleneck

- Spandex® rib-knit collar and cuffs
- Taped neck and shoulders

Colors: Black, Police Navy, White

Sizes: S-5XL

8100 Unisex Jersey Knit Turtleneck

- Spandex® rib-knit collar and cuffs
- Taped neck and shoulders
- Hemmed bottom

Colors: Black, Navy, Police Navy, White, Wine

Sizes: S-5XL

8117 Unisex Jersey Mock Turtleneck Dickie

Colors: Black, Police Navy

Sizes: M, XL, 3XL



A+ Jersey Knit Polo Overshirts:

- **Guaranteed quality**

- A+ Fabrics: 60% combed ring-spun cotton, 40% polyester
- 12.5 oz.
- Stain, fade, shrink resistant and wrinkle free
- 3-button fused placket
- Lycra® banded bottom
- Taped neck and shoulders
- Reinforced stitching
- Easy care: machine wash and dry



8311

8311 Unisex Jersey Knit Polo Overshirt with Banded Bottom, Short Sleeves

- Hemmed cuffs
- Colors: Dark Green, Dark Navy, Red, White, Wine
Sizes: S-5XL

A+ Jersey Knit Polo Shirts:

- **Guaranteed quality**

- A+ Fabrics: 60% combed ring-spun cotton, 40% polyester
- 6.9 oz. fabric for white, 6.4 oz. fabric for colors
- Stain, fade, shrink resistant and wrinkle free
- 3-button fused placket
- Banded cuffs, Taped neck and shoulders
- Double-needle stitching in shoulder and armholes for durability
- Easy care: machine wash and dry



8320

8320 Unisex Jersey Knit Polo Shirt, Short Sleeves

- Colors: Black, Dark Green, Dark Navy, Red, White, Wine
Sizes: S-5XL

A+ Moisture-Wicking Jersey Shirts :

- **Guaranteed quality**

- A+ Fabrics: 100% polyester
- 5 oz. Dry-Fit
- Stain, fade, shrink resistant and wrinkle free
- 3-button fused placket
- Lycra® banded bottom
- Taped neck and shoulders
- Reinforced stitching
- Easy care: machine wash and dry

8953 Unisex Dry-Fit Moisture-Wicking Jersey Short Sleeve Performance Polo Shirt

- Colors: Black, Blue, Bright Navy, Dark Green, Dark Navy, Dark Royal, Grey, Purple, Red, RK Light Blue, White, Wine
Sizes: S-3XL



8953



8956

8956 Unisex Dry-Fit Moisture-Wicking Jersey Long Sleeve Performance Polo Shirt

- Colors: Black, Bright Navy, Dark Green, Dark Royal, White
Sizes: S-3XL

A+ Performance Jackets:

- **Guaranteed quality**
- Stain, fade, shrink, and pill resistant
- Easy-pull zipper
- Easy care: machine wash and dry

6225 Unisex Medium-Weight Nylon Jacket

- A+ Fabrics: 100% water-repellent polyester shell
- Fleece body lining: 76% polyester, 12% rayon, 12% cotton
- Sleeve lining: 100% nylon
- Sleeve padding: 100% polyester
- Shock-cord drawstring at hem
- Elasticized cuff bands
- Zip-off fleece-lined hood

Colors: Black, Green, Navy, Red, Wine

Sizes: S-5XL

Black

Green

Navy

Red

Wine

6225

A+ Performance Wear:

- **Guaranteed quality**
- A+ Fabrics: 100% polyester performance fleece
- Moisture wicking
- Anti-pill technology
- Performance color retention
- Lycra® rib-knit trim for shape retention, flexibility, and long wear
- Machine wash and dry

6202



6202 Unisex Zip-Front Fabri-Tech Fleece Jacket

- A+ Fabrics: 100% spun polyester
- On-seam pockets
- Hemmed bottom

Colors: Black, Charcoal, Green, Lipstick, Navy, Wine

Sizes: S-3XL

Black

Charcoal

Green

Lipstick

Navy

Wine

A+ Performance Fleece Sweatshirts:

• **Guaranteed quality**

- A+ Fabrics: 60% combed ring-spun cotton, 40% polyester
- 8.5 oz. knit
- Stain, fade, and shrink resistant
- Rib-knit cuffs
- Easy care: machine wash and dry



6247

6247 Unisex Full-Zip Hooded Fleece Sweatshirt

- Kangaroo patch pockets
- Rib-knit bottom band

Colors: Ash Grey, Black, Dark Royal, Hunter Green, Navy, Red, Wine

Sizes: S-3XL

Ash Grey	Black
Dark Royal	Hunter Green
Navy	Oxford Grey
Red	Wine



6254

6254 Unisex Crewneck Fleece Sweatshirt

- Rib-knit neck and bottom band

Colors: Ash Grey, Black, Dark Royal, Hunter Green, Navy, Oxford Grey, Red, Wine

Sizes: S-3XL

6136

Black
Charcoal
Bright Navy
Burgundy
Dark Green



6135 Male Crew Neck 1/4 Zip Pullover

- Moisture wicking
- Waffle weave,
- Lycra® rib-knit cuffs
- Hemmed bottom

Colors: Black, Bright Navy, Burgundy, Charcoal, Dark Green

Sizes: S-3XL

6135



6136 Ladies Crew Neck 1/4 Zip Pullover

- Moisture wicking
- Waffle weave,
- Lycra® rib-knit cuffs
- Hemmed bottom

Colors: Black, Bright Navy, Burgundy, Charcoal, Dark Green

Sizes: S-3XL



Performance Counts

High-performance fabrics and moisture-wicking abilities for everyday comfort

7917M

7916M

Everyday Essentials

Wear-Tested™ classics offer reliable comfort in a range of workplace styles



Expandable waistband

A+ Performance Hospitality Pants:

- **Guaranteed quality**
- A+ Fabrics: 100% polyester
- 5.15 oz. polyester
- Stain, fade, and shrink resistant
- Wrinkle free
- Plain front
- High-quality easy-pull YKK zipper
- Sturdy hook-and-eye closure
- Bar-tacked stress points
- Easy care: machine wash and dry

7917M Women's Hospitality Pants

- Quarter-top front pockets
 - Expandable waistband with gripper trim to keep shirt tucked in
- Color: Black Sizes: 2-30 Unhemmed: 36"

7916M Men's Hospitality Pants

- Quarter-top front pockets
 - Back welt pocket
 - Expandable waistband with gripper trim to keep shirt tucked in
 - French fly with inside button closure
- Color: Black Waist sizes: 28"-60" Unhemmed: 37"

7918ME Men's Hospitality Pants, No Pockets

- Elastic side waistband with gripper trim to keep shirt tucked in
 - French fly with inside button closure
- Color: Black Waist sizes: 28"-60" Unhemmed: 37"

7919ME Women's Hospitality Pants, No Pockets

- Elastic side waistband with gripper trim to keep shirt tucked in
- Color: Black Sizes: 2-30 Unhemmed: 36"

7918ME

7919ME



A+ Modern Fit Flat Front Pants:

- **Guaranteed quality**
- Quarter top front pockets
- Reinforced stitching
- Stain, fade, and wrinkle resistant
- Machine wash and dry



7894M



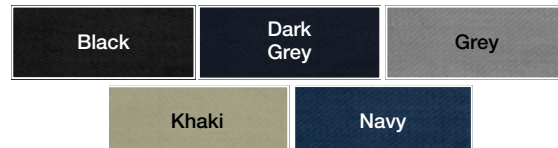
7899M

7894M Men's MVP Flex Twill Pants

- A+ Fabrics: 65% polyester / 35% cotton
 - Standard waistband
- Colors: Black, Dark Grey, Grey, Khaki, Navy
Sizes: Men's 28"-60" waist
Hemmed inseam: 30", 32", 34", Unhemmed: 37"

7899M Men's PERFORMANCE Pants

- A+ Fabrics: 100% polyester
 - Standard waistband
- Colors: Black, Khaki, Navy
Sizes: Men's 28"-60" waist
Hemmed inseam: 30", 32", 34", Unhemmed: 37"





7188M



7180M

A+ Cargo Pants and Shorts:

- **Guaranteed quality**

- Stain, fade, and shrink resistant
- Wrinkle free
- Plain front
- Jean waistband with button closure
- Quarter-top front pockets
- Functional cargo pockets with security flaps
- Bar-tacked stress points
- Easy care: machine wash and dry
- Also suitable for industrial laundry (IL)

7188M Men's Cargo Pants

- A+ Fabrics: 65% polyester, 35% cotton
 - 8.25 oz. Gusto Plus twill
 - Additional room in seat and thighs for comfort
- Colors: Black, Graphite, Navy, Sand Khaki
Sizes: 28"-60" waist
Hemmed inseams: 30", 32", 34"
Unhemmed: 37"

7180M Women's Cargo Pants

- A+ Fabrics: 65% polyester, 35% cotton
 - 7.0 oz. Brushed Centurion twill
- Colors: Black, Graphite, Navy, Sand Khaki
Sizes: 2-30

7010M



7012M



7010M Men's MVP Flex Twill Cargo Pants

- A+ Fabrics: 65% polyester / 35% cotton
- Standard waistband

Colors: Black, Graphite, Khaki, Navy

Sizes: Men's 28"-60" waist

Hemmed inseam: 30", 32", 34"

Unhemmed: 37"

7354M Men's Cargo Shorts

- A+ Fabrics: 65% polyester, 35% cotton
- 8.25 oz. Gusto Plus twill
- Additional room in seat and thighs for comfort

Colors: Black, Graphite, Navy, Sand Khaki

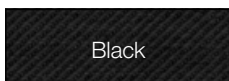
Sizes: 28"-60" waist

7012M Men's MVP Flex Twill Cargo Shorts

- A+ Fabrics: 65% polyester / 35% cotton
- Standard waistband

Colors: Black, Graphite, Khaki, Navy

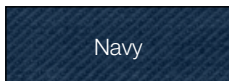
Sizes: Men's 28"-60" waist



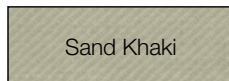
Black



Graphite



Navy



Sand Khaki



7354M



If any garment does not stand up to one year of normal wear, we'll replace it.

It's that simple.



A+ Men's Pants and Shorts:

- **Guaranteed quality**

- A+ Fabrics:
 - 65% polyester, 35% cotton
- 8.25 oz. twill
- Stain, fade, and shrink resistant
- Wrinkle free
- Easy-pull YKK zipper
- Hook-and-eye closure
- Quarter-top front pockets
- Bar-tacked stress points
- 2 back pockets (button closure on left back pocket)
- Easy care:
 - machine wash and dry
- Also suitable for industrial laundry (IL)

7021M Men's Plain Front Relaxed Fit Twill Pants

- Gusto Plus twill
- Additional room in seat and thighs for comfort

Colors: Black, Navy, Sand Khaki

Waist sizes: 28"-60"

Hemmed inseams: 30", 32", 34"

Unhemmed: 37"

Black

Navy

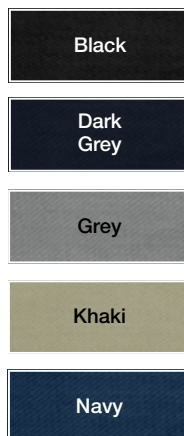
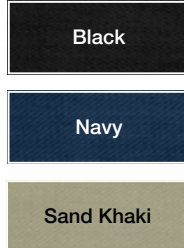
Sand Khaki

A+ Men's Pants and Shorts:

- **Guaranteed quality**
- Stain, fade, and shrink resistant
- Wrinkle free
- Easy-pull YKK zipper
- Hook-and-eye closure
- Easy care: machine wash and dry
- Also suitable for industrial laundry (IL)

7031M Men's Plain Front Relaxed Fit Twill Shorts

- A+ Fabrics: 65% polyester, 35% cotton
 - 8.25 oz. Gusto Plus twill
 - Jean waistband and hem
 - Quarter-top front pockets
- Colors: Black, Navy, Sand Khaki
Waist sizes: 28"-60"



7898M Men's MVP Flex Twill Shorts

- A+ Fabrics: 65% polyester / 35% cotton
 - Standard waistband
- Colors: Black, Dark Grey, Grey, Khaki, Navy
Sizes: Men's 28"-60" waist





7808M



7806M

A+ Women's Pants and Shorts:

- **Guaranteed quality**

- Stain, fade, and shrink resistant
- Wrinkle free
- Easy-pull YKK zipper
- Hook-and-eye closure
- Easy care: machine wash and dry
- Also suitable for industrial laundry (IL)

7808M Women's Plain Front Classic Fit Twill Shorts

- A+ Fabrics: 65% polyester, 35% cotton
 - 7.0 oz. Brushed Centurion twill
 - Comfortable fit, popular style
- Colors: Black, Navy, Sand Khaki
Sizes: 2–30

7806M Women's Plain Front Classic Fit Twill Pants

- A+ Fabrics: 65% polyester, 35% cotton
 - 7.0 oz. Brushed Centurion twill
- Colors: Black, Navy, Sand Khaki
Sizes: 2–30
Inseam: hemmed or unhemmed (36")

Black

Navy

Sand Khaki



School Apparel

*Simply the Best **Uniforms!**
Made by Simply the Best **People!***



Welcome to School Apparel Uniform



Lasting impressions

A+ School Apparel helps kids show their true colors

Today's schools and families need their uniforms to be a lot of things – classic, consistent, comfortable, durable, and available in a whole host of sizes. That's because school uniforms are more than simply garments; they play a huge role in promoting an image and creating a cohesive school community. As America's largest schoolwear manufacturer, A+ School Apparel answers the call. We offer more product

diversity – whether in sizing or styling – than any other uniform provider. Our apparel is guaranteed to last. Our customer service team is tops. And because we have U.S.-based manufacturing and warehousing, we offer year-round inventory support and fast delivery of both in-stock and custom items. We want to make your A+ experience one worth repeating year after year.



If any garment
does not stand
up to one year
of normal wear,
we'll replace it.
It's that simple.

1-year Wear-Tested™ Guarantee

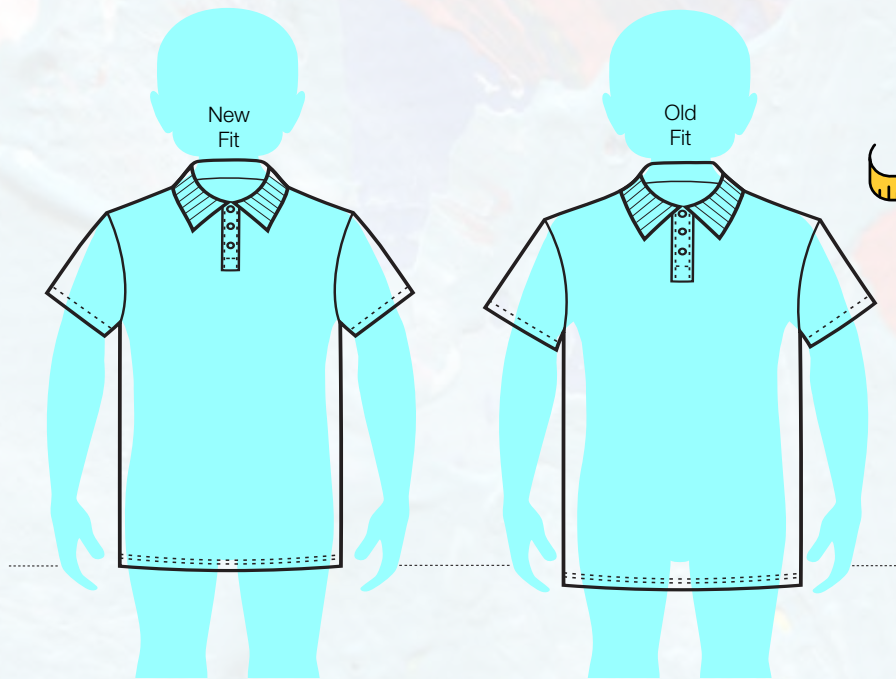
A+ garments give students, parents, school administrators, and retailers everything they want in school uniform apparel – easy-care fabrics, maximum durability, consistent colors, and a great fit. We're so sure of our quality that if any garment doesn't stand up to one year of normal wear, we'll replace it. It's that simple.

Contents

Knit Shirts	48-53
Sweaters	54-57
Girls Wear	58-63
Pants & Shorts	64-71
Woven Shirts	72-77
Activewear	78-81
Outerwear & Blazers	82-83
Socks & Tights	84-85

Polo features:

- Stain, fade, shrink, and pill resistant
- Wrinkle free
- Machine wash and dry



Neck Comfort

- Smaller Collar Width

Tailor Fit

- Fitted Body Width
- Smaller Shoulder-to-Shoulder

Modern Length

- Shorter Body Length

Button

- Shorter Placket

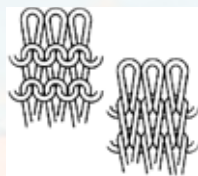
Knits Up Close

Whether the fabric is jersey, piqué, interlock, or dry-fit, our A+ classic knit shirts offer quality construction, color consistency, and cool comfort. Made from Wear-Tested™ fabrics with reinforced stitching for extreme durability, A+ knit shirts are stellar uniform staples. Add the school logo to top off the look.



Piqué

Single-knit, tucked construction, creating a surface of raised cords running in the warp direction. Stylish and popular.



Jersey

Single-knit construction with plain stitches on the front and purl stitches on the back, creating a smooth outer surface.



Interlock

Fine-gauge compound knit construction (two 1x1 ribs interknitted), creating a smooth surface on both sides. Soft and comfortable.

Ash Grey	Black	Blue	Bright Navy	Cardinal	Cornsilk	Dark Green	Dark Navy
Dark Royal	Khaki	Navy	Pink	Red	RK Light Blue	ST Maize Yellow	Tulane Forest Lane Green
Tulane Gold	Tulane Jade	Tulane Kelly Green	Tulane Orange	Tulane Purple	White	Wine	Yellow

8760



8760 Piqué Knit Short Sleeve Polo Shirt

· Hemmed cuffs and bottom

A+ Fabrics 60% cotton / 40% polyester

Colors Ash Grey (ASH), Black (BLK), Blue (BLU), Bright Navy (BNY), Cardinal (CRD), Dark Green (DGN), Dark Navy (DNY), Dark Royal (DRO), Khaki (KHK), Navy (NVY), Pink (PNK), Red (RED), ST Maize Yellow (STM), Tulane Forest Lane Green (TFL), Tulane Gold (TGD), Tulane Jade (TJD), Tulane Kelly Green (TKG), Tulane Orange (TOG), Tulane Purple (TPR), White (WHI), Wine (WIN) & Yellow (YEL)

Sizes Youth YXXS-YXL, Adult S-3XL

8761



8761 Piqué Knit Short Sleeve Polo Shirt

· Banded cuffs, hemmed bottom

A+ Fabrics 60% cotton / 40% polyester

Colors Ash Grey (ASH), Black (BLK), Blue (BLU), Bright Navy (BNY), Cardinal (CRD), Cornsilk (CSK), Dark Green (DGN), Dark Navy (DNY), Dark Royal (DRO), Khaki (KHK), Navy (NVY), Pink (PNK), Red (RED), Tulane Forest Lane Green (TFL), Tulane Gold (TGD), Tulane Jade (TJD), Tulane Kelly Green (TKG), Tulane Orange (TOG), Tulane Purple (TPR), White (WHI), Wine (WIN) & Yellow (YEL)

Sizes Youth YXXS-YXL, Adult S-3XL

8766



8766 Piqué Knit Long Sleeve Polo Shirt

· Rib-knit cuffs, hemmed bottom

A+ Fabrics 60% cotton / 40% polyester

Colors Ash Grey (ASH), Black (BLK), Blue (BLU), Bright Navy (BNY), Cardinal (CRD), Cornsilk (CSK), Dark Green (DGN), Dark Navy (DNY), Dark Royal (DRO), Khaki (KHK), Navy (NVY), Pink (PNK), Red (RED), ST Maize Yellow (STM), Tulane Forest Lane Green (TFL), Tulane Gold (TGD), Tulane Jade (TJD), Tulane Kelly Green (TKG), Tulane Orange (TOG), Tulane Purple (TPR), White (WHI), Wine (WIN) & Yellow (YEL)

Sizes Youth YXXS-YXL, Adult S-3XL

8745



8745 Piqué Knit Short Sleeve Polo Shirt

· Welt cuffs and collar

· Split drop-tail

A+ Fabrics 100% cotton

Color White (WHI)

Sizes Youth YXXS-YXL, Adult S-3XL

8953



8953 5 oz. Dry-Fit Moisture-Wicking Jersey Short Sleeve Performance Polo Shirt

A+ Fabrics

100% polyester

Colors Black (BLK), Blue (BLU), Bright Navy (BNY), Dark Green (DGN), Dark Navy (DNY), Dark Royal (DRO), Grey (GRY), Purple (PUR), Red (RED), RK Light Blue (RLB), White (WHI) & Wine (WIN)

Sizes Youth YXXS-YXL, Adult S-3XL

8956



8956 5 oz. Dry-Fit Moisture-Wicking Jersey Long Sleeve Performance Polo Shirt

(Model K4550/K4566)

A+ Fabrics

100% polyester

Colors Black (BLK), Bright Navy (BNY), Dark Green (DGN), Dark Royal (DRO) & White (WHI)

Sizes Youth YXXS-YXL, Adult S-3XL

8320



8320 Jersey Knit Short Sleeve Polo Shirt

· Banded cuffs

A+ Fabrics

60% combed ring-spun cotton / 40% polyester

Colors Black (BLK), Blue (BLU), Dark Green (DGN), Dark Navy (DNY), Navy (NVY), Red (RED), White (WHI), Wine (WIN) & Yellow (YEL)

Sizes Youth YXXS-YXL, Adult S-3XL

8326



8326 Jersey Knit Long Sleeve Polo Shirt

· Rib-knit cuffs

A+ Fabrics

60% combed ring-spun cotton / 40% polyester

Colors Black (BLK), Blue (BLU), Dark Green (DGN), Dark Navy (DNY), Navy (NVY), Red (RED), White (WHI), Wine (WIN) & Yellow (YEL)

Sizes Youth YXXS-YXL, Adult S-3XL

8311



8311 Jersey Knit Short Sleeve Over-shirt

· Hemmed sleeves

· Lycra® banded bottom

A+ Fabrics

60% combed ring-spun cotton / 40% polyester

Colors Ash Grey (ASH), Blue (BLU), Dark Green (DGN), Dark Navy (DNY), Dark Royal (DRO), Red (RED), White (WHI), Wine (WIN) & Yellow (YEL)

Sizes Youth YXXS-YXL, Adult S-3XL

8317



8317 Jersey Knit Long Sleeve Over-shirt

· Rib-knit cuffs

· Lycra® banded bottom

A+ Fabrics

60% combed ring-spun cotton / 40% polyester

Colors Ash Grey (ASH), Blue (BLU), Dark Green (DGN), Dark Navy (DNY), Dark Royal (DRO), Red (RED), White (WHI), Wine (WIN) & Yellow (YEL)

Sizes Youth YXXS-YXL, Adult S-3XL

8100

8100 Jersey Knit Long Sleeve Turtleneck

· Lycra® rib-knit cuffs and collar

A+ Fabrics 60% combed ring-spun cotton / 40% polyester

Colors Blue (BLU), Dark Navy (DNY), Navy (NVY), White (WHI) & Wine (WIN)

Sizes Youth YXXS-YXL, Adult S-3XL



8432



8432 Interlock Knit Short Sleeve Polo Shirt

· Hemmed cuffs

A+ Fabrics 60% combed ring-spun cotton / 40% polyester

Color White (WHI)

Sizes Youth YXXS-YXL, Adult S-3XL

8434



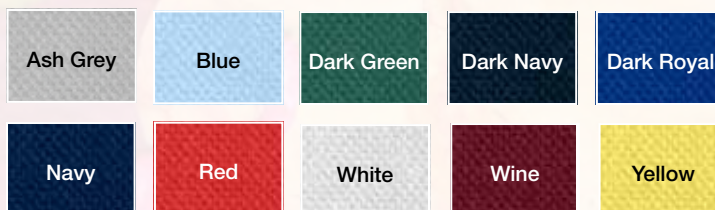
8434 Interlock Knit Long Sleeve Polo Shirt

· Rib-knit cuffs

A+ Fabrics 60% combed ring-spun cotton / 40% polyester

Color White (WHI)

Sizes Youth YXXS-YXL, Adult S-3XL



9739

NEW 9739 5 oz. Moisture Wicking Jersey Knit Polo Shirt (Female)

- 2 button placket
- side vents
- rib knit cuffs
- short cap sleeve

A+ Fabrics PERFORMANCE Dry-Fit 100% polyester

Colors Black (BLK), Blue (BLU), Bright Navy (BNY), Dark Green (DGN), Dark Royal (DRO), Purple (PUR), Red (RED), White (WHI) & Wine (WIN)

Sizes Youth YXXS-YXL, Adult S-3XL



9735



NEW 9735 Pique Short Sleeve Polo Shirt (Female)

- 2 button placket
- side vents
- rib knit cuffs
- short cap sleeve

A+ Fabrics 60% cotton / 40% polyester

Colors Ash Grey (ASH), Black (BLK), Blue (BLU), Bright Navy (BNY), Dark Green (DGN), Dark Navy (DNY), Dark Royal (DRO), Navy (NVY), Red (RED), Tulane Purple (TPR), White (WHI), Wine (WIN) & Yellow (YEL)

Sizes Youth YXXS-YXL, Adult S-3XL

9737

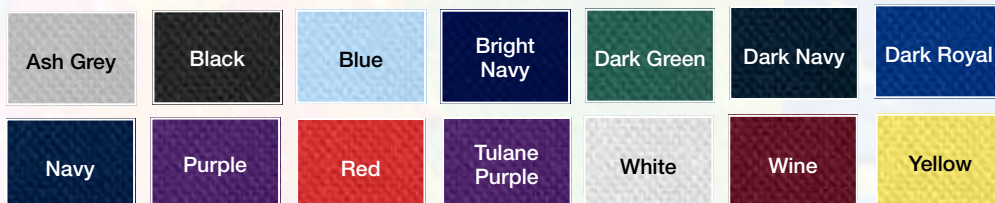
NEW 9737 Interlock Short Sleeve Polo Shirt (Female)

- 2 button placket
- side vents
- rib knit cuffs
- short cap sleeve

A+ Fabrics 60% cotton / 40% polyester

Color White (WHI)

Sizes Youth YXXS-YXL, Adult S-3XL





Neck Comfort

- Smaller Collar Width

Tailor Fit

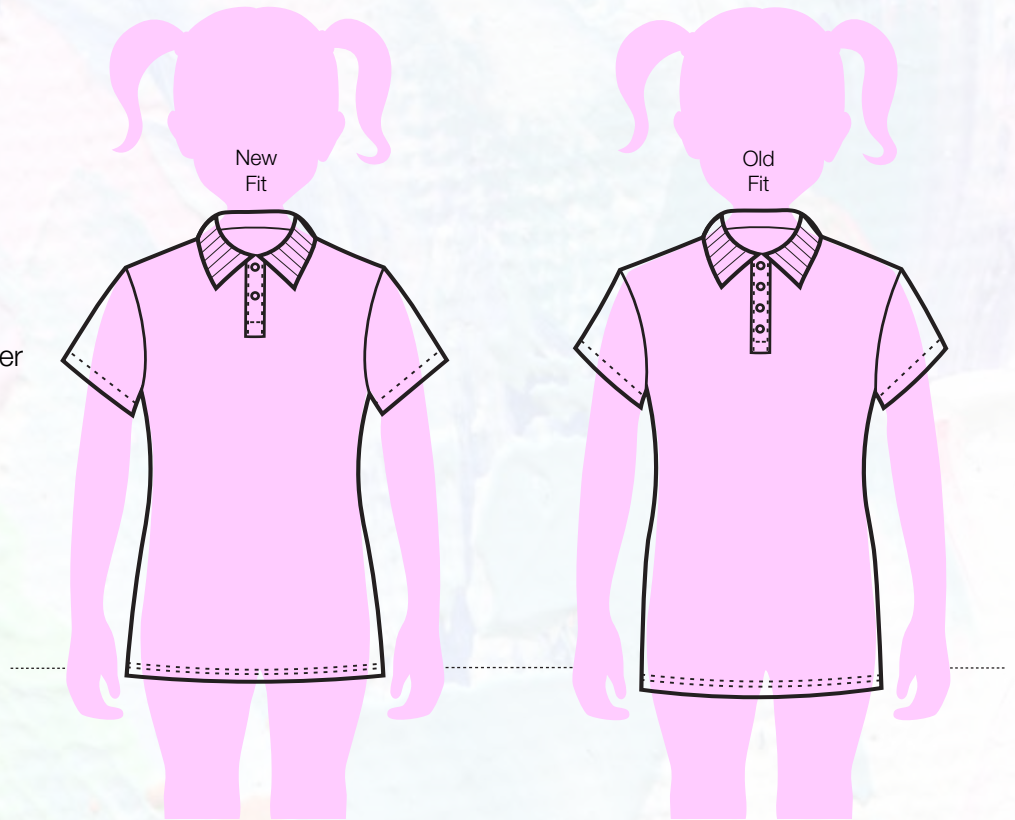
- Fitted Body Width
- Bigger Hip
- Smaller Shoulder-to-Shoulder

Modern Length

- Shorter Body Length
- Shorter Cuff

Button

- Less Buttons
- Shorter Placket



8360



8360 Jersey Knit Button-Front Short Sleeve Shirt (Female)

- Peter Pan collar
- Chest pocket
- Hemmed sleeves

A+ Fabrics 60% cotton / 40% polyester

Color White (WHI)

Sizes Youth YXXS-YXL, Adult S-3XL

9729

9729



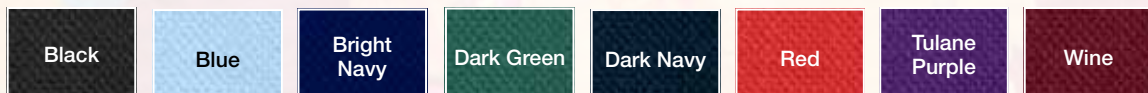
9729 Jersey Knit Dress

- Narrow placket
- Shirred top skirt
- Ribbed cuffs
- Short sleeve

A+ Fabrics 60% cotton / 40% polyester

Colors Black (BLK), Blue (BLU), Bright Navy (BNY), Dark Green (DGN), Dark Navy (DNY), Red (RED), Tulane Purple (TPR) & Wine (WIN)

Sizes Youth YXXS-YXL



Fine-Gauge Sweaters

- Dyed-to-match buttons
- Reinforced stress areas
- Elasticized rib-trim cuffs for shape retention
- Machine wash and dry

6430



6430 Girls V-Neck Cardigan

- No pockets

A+ Fabrics 100% pill-resistant acrylic

Colors Black (BLK) & Navy (NVY)

Sizes Youth YXXS-YXL, Adult S-3XL

6432



6432 Unisex T-Body V-Neck Long Sleeve Pullover

A+ Fabrics 100% pill-resistant acrylic

Colors Black (BLK) & Navy (NVY)

Sizes Youth YXXS-YXL, Adult S-3XL

4917



4917 Girls Crew Neck Cardigan

- No pockets
- Half-milano stitch
- 7 buttons

A+ Fabrics 100% pill-resistant acrylic

Colors Black (BLK), Lipstick (LIP) & Navy (NVY)

Sizes Youth YXXS-YXL, Adult S-3XL

6433



6433 Unisex V-Neck Pullover Vest

A+ Fabrics 100% pill-resistant acrylic

Colors Black (BLK) & Navy (NVY)

Sizes Youth YXXS-YXL, Adult S-3XL

Black

Lipstick

Navy

Varsity Sweaters

- Dyed-to-match buttons
- Reinforced stress areas
- Elasticized rib-trim cuffs for shape retention
- Machine wash and dry

6340



6340 5-Button Cardigan

- 7 cut
 - Contrasting trim on placket, pocket welt
 - 3 stripes on the upper left sleeve
- A+ Fabrics** 100% pill-resistant acrylic
Color Body: Navy (NVY) Trim: White (WHI)
Sizes Youth YXXS-YXL, Adult S-5XL

3461



3461 5-Button Cardigan

- 5 cut
 - 3 contrasting stripes on upper left sleeve
- A+ Fabrics** 100% pill-resistant acrylic
Color Body: Navy (NVY) Trim: White (WHI)
Sizes Youth YXXS-YXL, Adult S-5XL

6603



6603 V-Neck Pullover Vest

- 7 cut
 - 1/4" stripe trim around the neck and armhole
- A+ Fabrics** 100% pill-resistant acrylic
Color Body: Navy (NVY) Trim: White (WHI)
Sizes Youth YXXS-YXL, Adult S-5XL

6503



6503 V-Neck Long Sleeve Pullover

- 7 cut
 - 1/4" stripe trim around neck, sleeve cuff and bottom band
- A+ Fabrics** 100% pill-resistant acrylic
Color Body: Navy (NVY) Trim: White (WHI)
Sizes Youth YXXS-YXL, Adult S-5XL

Acrylic Sweaters

Sweaters features:

- Dyed-to-match buttons
- Reinforced stress areas
- Elasticized rib-trim cuffs and bottom for shape retention
- Machine wash and dry

6000 Girls Crew Neck Cardigan

- No pockets
- 7 buttons

A+ Fabrics 100% pill-resistant acrylic

Colors Black (BLK), Green (GRN), Lipstick (LIP), Navy (NVY), White (WHI) & Wine (WIN)

Heather Color Grey Heather (GHE)

Sizes Youth YXXS-YXL, Adult S-3XL

6000



6300 V-Neck Cardigan

- Hemmed bottom
- 2 pockets
- 5 buttons

A+ Fabrics 100% pill-resistant acrylic

Colors Black (BLK), Brown (BRN), Cardinal (CRD), Green (GRN), Khaki (KHK), Lipstick (LIP), Mayfair (MAY), Mulberry (MUL), Nally Powder Blue (NPB), Navy (NVY), Purple (PUR), Spruce Green (SGR), White (WHI), Wine (WIN) & Yellow (YEL)

Heather Colors Charcoal Heather (CHE) & Grey Heather (GHE)

Sizes Youth YXXS-YXL, Adult S-3XL

6300



6500

6500 V-Neck Long Sleeve Pullover

· No pockets

A+ Fabrics 100% pill-resistant acrylic

Colors Black (BLK), Cardinal (CRD), Green (GRN), Lipstick (LIP), Mayfair (MAY), Mulberry (MUL), Nally Powder Blue (NPB), Navy (NVY), Purple (PUR), Spruce Green (SGR), White (WHI) & Wine (WIN)

Heather Colors Charcoal Heather (CHE) & Grey Heather (GHE)

Sizes Youth YXXS-YXL, Adult S-3XL



6530



6530 Crew Neck Long Sleeve Pullover

· No pockets

A+ Fabrics 100% pill-resistant acrylic

Colors Lipstick (LIP), Navy (NVY) & Wine (WIN)

Sizes Youth YXXS-YXL, Adult S-3XL

6545



6545 1/4 Zip Long Sleeve Pullover

· No pockets

A+ Fabrics 100% pill-resistant acrylic

Color Navy (NVY)

Sizes Youth YXXS-YXL, Adult S-3XL

6600



6600 V-Neck Pullover Vest

· No pockets

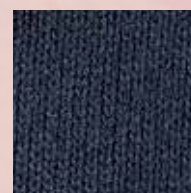
A+ Fabrics 100% pill-resistant acrylic

Colors Black (BLK), Cardinal (CRD), Green (GRN), Lipstick (LIP), Mayfair (MAY), Navy (NVY), Purple (PUR), Spruce Green (SGR) & Wine (WIN)

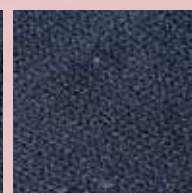
Heather Colors Charcoal Heather (CHE) & Grey Heather (GHE)

Sizes Youth YXXS-YXL, Adult S-3XL

Made to Last



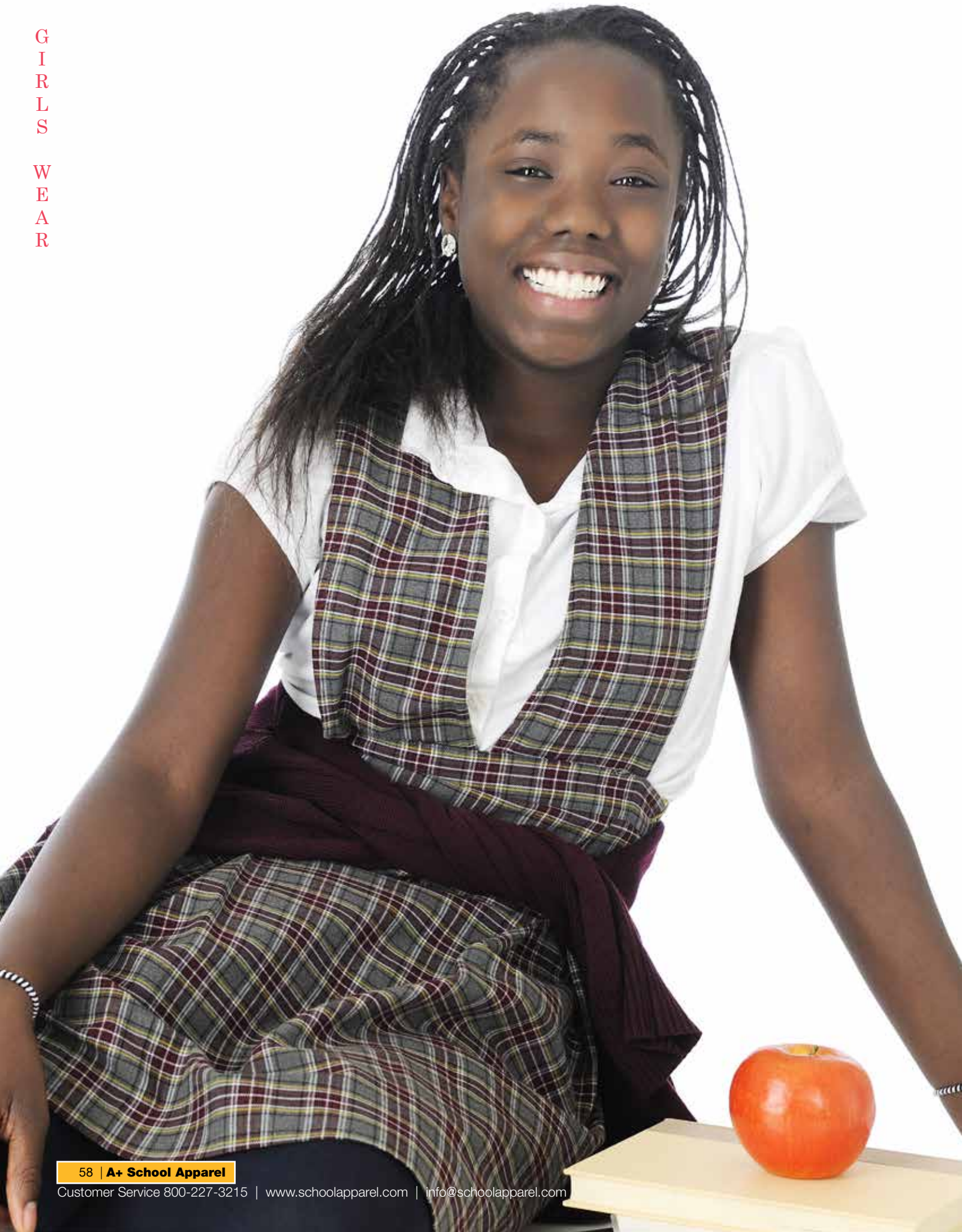
A+ sweater surface



Competitor's sweater surface

A+ sweaters offer:

- Long-staple A+ fibers that reduce pilling
- Reinforced buttonholes and bar-tacked stress points
- Elasticized rib-trim for shape retention
- Color consistency from year to year



A+ Plaids - Blend Fabrics (65% polyester, 35% cotton)



A+ Plaids - Polyester Fabrics (100% polyester)



A+ Solid Fabrics

(65% polyester, 35% cotton) (65% polyester, 35% rayon) (100% polyester)



Many of our girls' wear items have an adjustable elastic waistband on the inside. Look for this feature in the product descriptions.

1194



1194

Jumper / Dress (Model 94)

- Drop waist with buttons
- Kick pleats
- Right side pocket
- Back zipper

Blend Plaids (BP): 65% polyester / 35% cotton
Colors P1C, P35, P37, P41, P49, P53, P54, P55, P57, P59, P60, P76, P77, P80, P81

Polyester Plaids (PP): 100% polyester

Colors P1B, P36, P42, P43, P44, P45, P50, P6T, P61, P66, P70, P79, P8B, P83, P85, P90, P91, P94

Blend Solids (BS): Twill - 65% polyester / 35% cotton

Colors Blend Khaki, Blend Navy

Polyester Solids (PS): 100% texturized polyester

Color Navy

Sizes Youth 3-18, Youth Half Sizes 6½-18½

1072



1072

Jumper / Dress (Model 72)

- Slit front
- Knife pleats
- Adjustable inside waistband

Blend Plaids (BP): 65% polyester / 35% cotton

Colors P41, P55 & P57

Polyester Plaids (PP): 100% polyester

Color P79

Polyester Solids (PS): 100% texturized polyester

Color Navy

Sizes Youth 3-18, Youth Half Sizes 6½-18½

1062



P54:
Non-Stock

1062

Jumper / Dress (Model 62)

- V-slit front
- Knife pleats
- In-pleat pocket
- Adjustable inside waistband

Blend Plaids (BP): 65% polyester / 35% cotton

Color P57

Polyester Plaids (PP): 100% polyester

Color P83

Sizes Youth 3-18, Youth Half Sizes 6½-18½

1078



1078

Jumper / Dress (Model 78)

- Pleated front and back
- Tunic belt
- Button shoulders

Polyester Plaids (PP): 100% polyester

Color 03N

Sizes Youth 3-18, Youth Half Sizes 6½-18½

Jumpers (See fabric swatches on page 15.)

1034 Skirt (Model 34)

- 2 kick pleats
- Right-side seam pocket
- Adjustable inside waistband

Blend Plaids (BP): 65% polyester / 35% cotton

Colors P35, P37, P41, P49, P54, P55, P57, P59, P60, P62, P76, P80, P81

Polyester Plaids (PP): 100% polyester

Colors P32, P36, P42, P43, P50, P6T, P61, P66, P79, P8B, P83, P90, P94

Blend Solids (BS): Twill - 65% polyester / 35% cotton

Colors Blend Khaki, Blend Navy

Polyester Solids (PS): 100% texturized polyester

Colors Black, Medium Grey, Navy, Sand Khaki

Sizes Youth 3-18, Youth Half Sizes 6½-18½, Junior 26-42



1034

1943



1943 Skirt (Model 43)

- Stitched-down box pleats
- Side zipper
- Interior coin pocket
- Adjustable inside waistband

Blend Plaids (BP): 65% polyester / 35% cotton

Colors P35, P37, P41, P49, P55, P57, P65, P76, P80, P81

Polyester Plaids (PP): 100% polyester

Colors 03N, P79, P82

Blend Solids (BS): Twill - 65% polyester / 35% cotton

Colors Blend Khaki, Blend Navy

Rayon Blend (RB): 65% polyester / 35% rayon

Colors Khaki, Navy

Sizes Youth 3-18, Youth Half Sizes 6½-18½, Junior 26-42

1037 Kilt (Model 37)

- Knife pleats
- Front wrap with button tab
- Interior coin pocket

Polyester Plaids (PP): 100% polyester

Color P79

Polyester Solids (PS): 100% texturized polyester

Colors Medium Grey, Navy

Sizes Youth 3-18, Youth Half Sizes 6½-18½, Junior 26-42



1037

7931



7931 Skort (Model 04) Solid*

- Button front
- Left-side self-pocket
- Elastic back

Brushed Twill (BT): 65% polyester / 35% cotton

Colors Black, Navy, Sand Khaki

Sizes Youth 3-18, Youth Half Sizes 6½-18½, Junior 3-27

*To order this skort in plaid, see item 1014.

1014 Skort (Model 04) Plaid*

- Button front
- Left-side self-pocket
- Adjustable inside waistband

Blend Plaids (BP): 65% polyester / 35% cotton

Colors P37, P53, P54, P55, P57, P60, P65, P76, P80, P81

Sizes Youth 3-18, Youth Half Sizes 6½-18½, Junior 3-27

*To order this skort in a solid, see item 7931.

1014



7942



7942 Skort (Model 48) Solid

- Long skort with front and back flaps
- 2 button tabs on front panel
- Elastic back
- Right-side self-pocket

Blend Solids (BS): Twill - 65% polyester / 35% cotton

Colors Blend Khaki, Blend Navy

Sizes Youth 3-18, Youth Half Sizes 6½-18½, Junior 3-27

7982



7982 Double-Pleat Skort

- 2 front pleats
- Side tab button
- Side zipper

Brushed Twill (BT): 65% polyester / 35% cotton

Colors Khaki, Navy

Sizes Elastic Back: Youth 3-6X

Sizes Regular Back: Youth 7-18, Youth Half Sizes 6½-18½

1106



1106 Hipster Skort

- Front yoke
- Kick pleats
- Back zipper

Brushed Twill (BT): 65% polyester / 35% cotton

Colors Black, Khaki, Navy

Sizes Youth 3-18, Youth Half Sizes 6½-18½, Junior 3-27

1579



1579 Double-Pleat Skort (Model UD)

- 2 front and back stitched down pleats
- Side zipper
- No pocket
- Adjustable inside waistband

Rayon Blend (RB): 65% polyester / 35% rayon

Colors Khaki, Navy

Blend Plaids (BP): 65% polyester / 35% cotton

Colors P41, P55 & P57

Sizes Youth 3-18, Youth Half Sizes 6½-18½, Junior 3-27

Pants

- Reinforced stitching
- Stain, fade, and wrinkle resistant
- Machine wash and dry

6220



6220 Performance Nylon Gym Pants

- Moisture-wicking quick-cord waistband
- On-seam pockets
- Elasticized leg opening with zipper for easy on and off
- Ideal as workout wear or casual wear

A+ Fabrics

100% nylon

Colors

Dark Navy (DNY), Navy (NVY), Red (RED), Royal (ROY) & Wine (WIN)

Sizes

Youth YXXS-YXL,
Adult S-3XL

7059



7059 Unisex Pull-On Pants

- Full elastic waistband with mock fake fly
- Quarter-top front pockets,
- No back pockets
- No belt loops
- Reinforced knees

A+ Fabrics

65% polyester / 35% cotton, centurion twill

Colors

Navy (NVY) & Sand Khaki (SKH)

Sizes

Toddler 2T-3T,
Youth YXXS-YXL

7067 Unisex Pull-On Shorts

- Full multi-stitched elastic waistband
- Quarter-top front pockets,
- No back pockets
- No belt loops

A+ Fabrics

65% polyester / 35% cotton, centurion twill

Colors

Navy (NVY) & Sand Khaki (SKH)

Sizes

Toddler 2T-3T, Youth YXXS-YXL

7067



7872



7872

Unisex Relaxed Fit Pants (Model DA8600)

- Multi-stitched elastic back waistband
- Fused double knees
- Mock fake fly
- Quarter top front pockets
- No back pockets

A+ Fabrics

65% polyester / 35% cotton, centurion twill

Colors

Dark Grey (DGY) & Navy (NVY)

Sizes

Toddler 2T-4T

6211



6211 Girls Performance Bike Shorts

- Moisture wicking and antimicrobial
- Full elastic waistband
- Perfect under skirts and jumpers, or for weekend and casual wear

A+ Fabrics 90% polyester / 10% Spandex®

Colors Black (BLK) & Navy (NVY)

Sizes Youth YXS-YXL,

YXS=6, YS=8, YM=10/12, YL=14/16, YXL=18/20

Junior S-XL,

S=5, M=9, L=11, XL=13

6218



6218

Girls Performance Leggings

- Moisture wicking and antimicrobial
- Full elastic waistband
- Ideal under jumpers and skirts, or for weekend and casual wear

A+ Fabrics

90% polyester / 10% Spandex®

Color

Navy (NVY)

Sizes

Youth YXS-YXL,

YXS=6, YS=8, YM=10/12, YL=14/16, YXL=18/20

Junior S-XL,

S=5, M=9, L=11, XL=13

Black

Dark
Grey

Dark
Navy

Navy

Red

Royal

Sand
Khaki

Wine

Pants

- Reinforced stitching
- Stain, fade, and wrinkle resistant
- Machine wash and dry

NOTICEABLY SOFT™ Fabric
NATURALLY COMFORTABLE™ Fit
Guaranteed

7875



7875

Girls Mid-Rise Flat Front Pants (Model EL)

- L shaped front pockets
- 2 back pockets
- Adjustable inside waistband

A+ Fabrics 97% cotton / 3% Spandex®

Colors Black (BLK), Navy (NVY) & Sand Khaki (SKH)

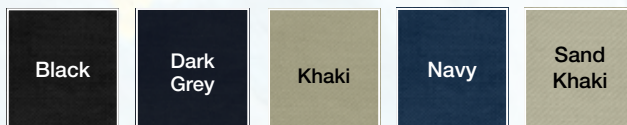
Sizes

Youth Regular 3-16,

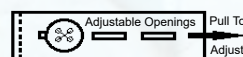
Youth Slim 7-16,

Youth Half Sizes 6½-18½,

Junior 0-27



Adjustable
Inside
Waistband



7876

Girls Mid-Rise Flat Front Shorts (Model ES)

- L shaped front pockets
- 2 back pockets
- Adjustable inside waistband

A+ Fabrics 97% cotton / 3% Spandex®

Colors Black (BLK), Navy (NVY) & Sand Khaki (SKH)

Sizes

Youth Regular 3-16,

Youth Slim 7-16,

Youth Half Sizes 6½-18½,

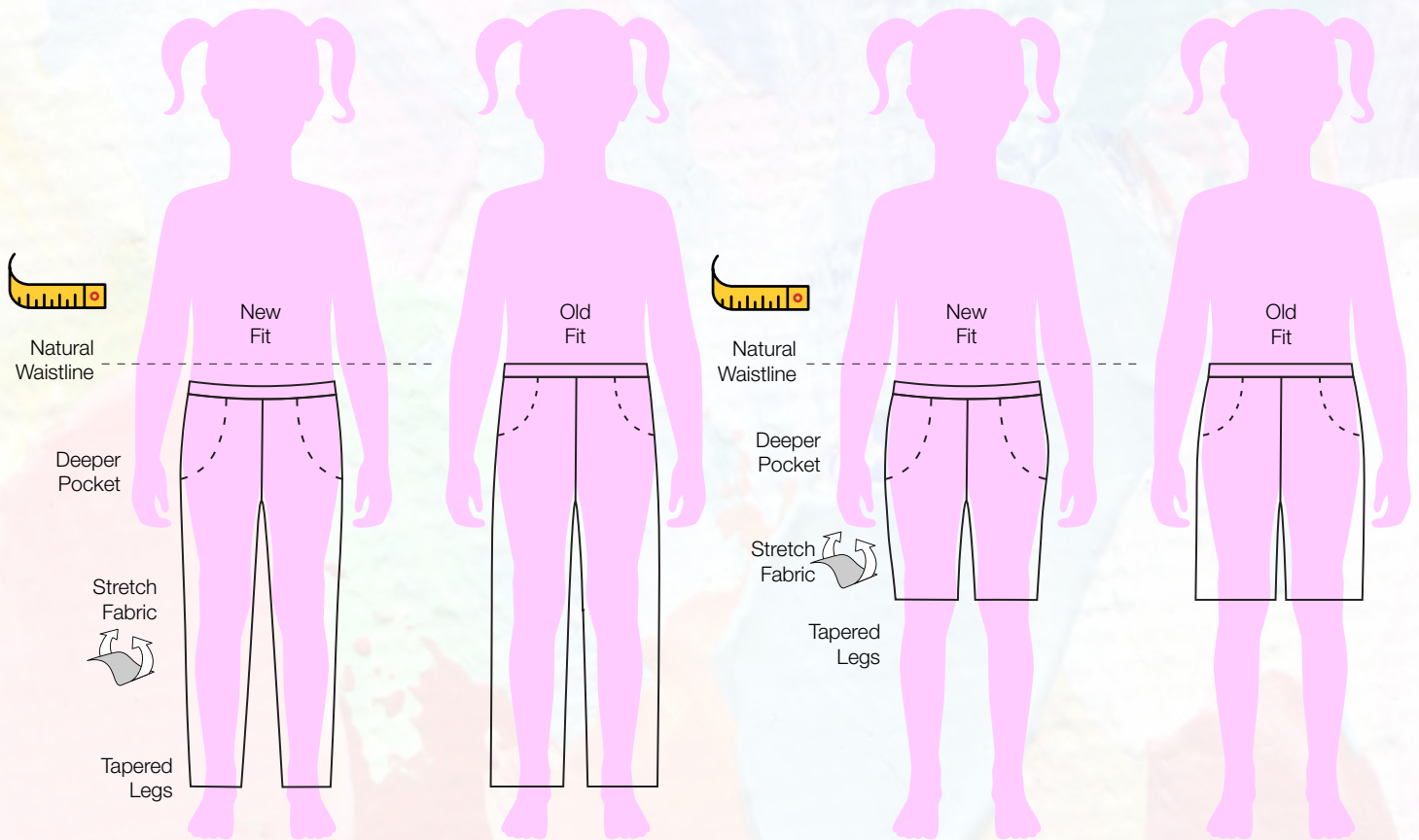
Junior 0-27

7876



MVP Modern Fit Flat Front Power Stretch Pants & Shorts

Natural waist lower rise | Straight, modern, tapered fit | Deeper pocket bag
Soft pocket lining | Soft hand twill fabric | Stretches & moves with you | Wrinkle & stain resistant



7895 / 7896

7895

Girls MVP Power Stretch Pants

· Adjustable inside waistband

A+ Fabrics

67% cotton / 30% polyester / 3% Lycra®

Colors Black (BLK), Dark Grey (DGY), Khaki (KHK) & Navy (NVY)

Sizes

Youth Regular 3-6X, 7-16;

Youth Half Sizes 6½-18½



7904

Girls MVP Power Stretch Shorts

· Adjustable inside waistband

A+ Fabrics

67% cotton / 30% polyester / 3% Lycra®

Colors Black (BLK), Dark Grey (DGY), Khaki (KHK) & Navy (NVY)

Sizes

Youth Regular 3-6X, 7-16;

Youth Half Sizes 6½-18½

7904 / 7910



7896

Junior MVP Power Stretch Pants

A+ Fabrics

67% cotton / 30% polyester / 3% Lycra®

Colors Black (BLK), Dark Grey (DGY), Khaki (KHK) & Navy (NVY)

Sizes Junior 0-27

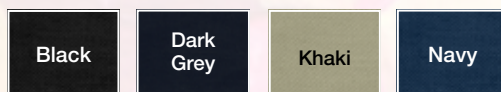
7910

Junior MVP Power Stretch Shorts

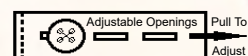
A+ Fabrics 67% cotton / 30% polyester / 3% Lycra®

Colors Black (BLK), Dark Grey (DGY), Khaki (KHK) & Navy (NVY)

Sizes Junior 0-27



Adjustable
Inside
Waistband



A+ School Apparel | 67

Pants features:

- Reinforced stitching
- Stain, fade, and wrinkle resistant
- Fused double knees
- Machine wash and dry

7862 / 7863



7862

Boys Plain Front Pants, Relaxed Fit

- Jean waistband and hem
- Quarter-top pockets
- Reinforced knees
- Adjustable inside waistband

A+ Fabrics 65% polyester / 35% rayon bi blend

Colors Charcoal Heather (DKH) & Grey Heather (GHE)

Sizes

Youth Regular 3-16;

Youth Slim 3-16;

Husky 25"-40" waist

7863

Males Plain Front Pants, Relaxed Fit

- Jean waistband and hem
- Quarter-top pockets
- Standard waistband

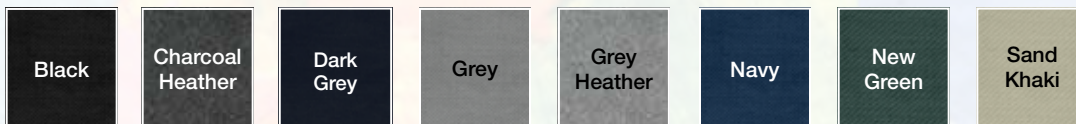
A+ Fabrics 65% polyester / 35% rayon bi blend

Colors Charcoal Heather (DKH) & Grey Heather (GHE)

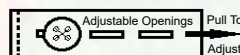
Sizes

Prep 27"-30" waist; 30" or 32" inseam

Men's 28"-48" waist; 30", 32", 34" inseam; 37" unhemmed



Adjustable
Inside
Waistband



7750



7750

Boys Plain Front Twill Pants, Relaxed Fit

- Jean waistband and hem
- Quarter-top pockets
- Reinforced knees
- Adjustable inside waistband

A+ Fabrics

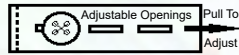
65% polyester / 35% cotton, gusto plus twill

Colors Black (BLK), Dark Grey (DGY), Grey (GRY), Navy (NVY) & Sand Khaki (SKH)

Sizes

Youth Regular 3-16;
Youth Slim 3-16;
Husky 25"-40" waist

Adjustable
Inside
Waistband



7021



7021

Males Plain Front Twill Pants, Relaxed Fit

- Jean waistband and hem
- Quarter-top pockets
- Standard waistband

A+ Fabrics

65% polyester / 35% cotton, gusto plus twill

Colors Black (BLK), Dark Grey (DGY), Grey (GRY), Navy (NVY) & Sand Khaki (SKH)

Sizes

Prep 27"-30" waist;
30" or 32" inseam,
Men's 28"-48" waist;
30", 32", 34" inseam;
37" unhemmed

7099



7099

Boys Plain Front Twill Shorts, Relaxed Fit

- Quarter-top pockets
- Adjustable inside waistband

A+ Fabrics

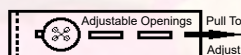
65% polyester / 35% cotton, gusto plus twill

Colors Black (BLK), Dark Grey (DGY), Grey (GRY), Navy (NVY) & Sand Khaki (SKH)

Sizes

Youth Regular 3-16,
Youth Slim 3-16,
Husky 25"-40" waist

Adjustable
Inside
Waistband



7031



7031

Males Plain Front Twill Shorts, Relaxed Fit

- Quarter-top pockets
- Standard waistband

A+ Fabrics

65% polyester / 35% cotton, gusto plus twill

Colors Black (BLK), Dark Grey (DGY), Grey (GRY), Navy (NVY) & Sand Khaki (SKH)

Sizes

Prep 27"-30" waist,
Men's 28"-48" waist

7893 / 7894



7893 Boys MVP Flex Twill Pants

- Adjustable inside waistband
- A+ Fabrics** 65% polyester / 35% cotton
- Colors** Black (BLK), Dark Grey (DGY), Grey (GRY), Khaki (KHK), Navy (NVY) & New Green (NUG)
- Sizes** Youth Regular 3-7, 8-20; Youth Slim 3-7, 8-16; Youth Half Sizes 27-40

7894 Mens MVP Flex Twill Pants

- Standard waistband
- A+ Fabrics** 65% polyester / 35% cotton
- Colors** Black (BLK), Dark Grey (DGY), Grey (GRY), Khaki (KHK), Navy (NVY) & New Green (NUG)
- Sizes** Men's 28"-48" waist; 30", 32", 34" inseam; 37" unhemmed

7897 / 7898



7897 Boys MVP Flex Twill Shorts

- Adjustable inside waistband
- A+ Fabrics** 65% polyester / 35% cotton
- Colors** Black (BLK), Dark Grey (DGY), Grey (GRY), Khaki (KHK), Navy (NVY) & New Green (NUG)
- Sizes** Youth Regular 3-7, 8-20; Youth Slim 3-7, 8-16; Youth Half Sizes 27-40

7898 Mens MVP Flex Twill Shorts

- Standard waistband
- A+ Fabrics** 65% polyester / 35% cotton
- Colors** Black (BLK), Dark Grey (DGY), Grey (GRY), Khaki (KHK), Navy (NVY) & New Green (NUG)
- Sizes** Men's 28"-48" waist

7014 / 7899



7014 Boys PERFORMANCE Pants

- Adjustable inside waistband
- A+ Fabrics** 100% polyester
- Colors** Black (BLK), Khaki (KHK) & Navy (NVY)
- Sizes** Youth Regular 3-7, 8-20; Youth Slim 3-7, 8-16; Youth Half Sizes 27-40

7899 Mens PERFORMANCE Pants

- Standard waistband
- A+ Fabrics** 100% polyester
- Colors** Black (BLK), Khaki (KHK) & Navy (NVY)
- Sizes** Men's 28"-48" waist; 30", 32", 34" inseam; 37" unhemmed

7912 / 7913



7912 Boys PERFORMANCE Shorts

- Adjustable inside waistband
- A+ Fabrics** 100% polyester
- Colors** Black (BLK), Khaki (KHK) & Navy (NVY)
- Sizes** Youth Regular 3-7, 8-20; Youth Slim 3-7, 8-16; Youth Half Sizes 27-40

7913 Mens PERFORMANCE Shorts

- Standard waistband
- A+ Fabrics** 100% polyester
- Colors** Black (BLK), Khaki (KHK) & Navy (NVY)
- Sizes** Men's 28"-48" waist

Black

Dark
Grey

Grey

Khaki

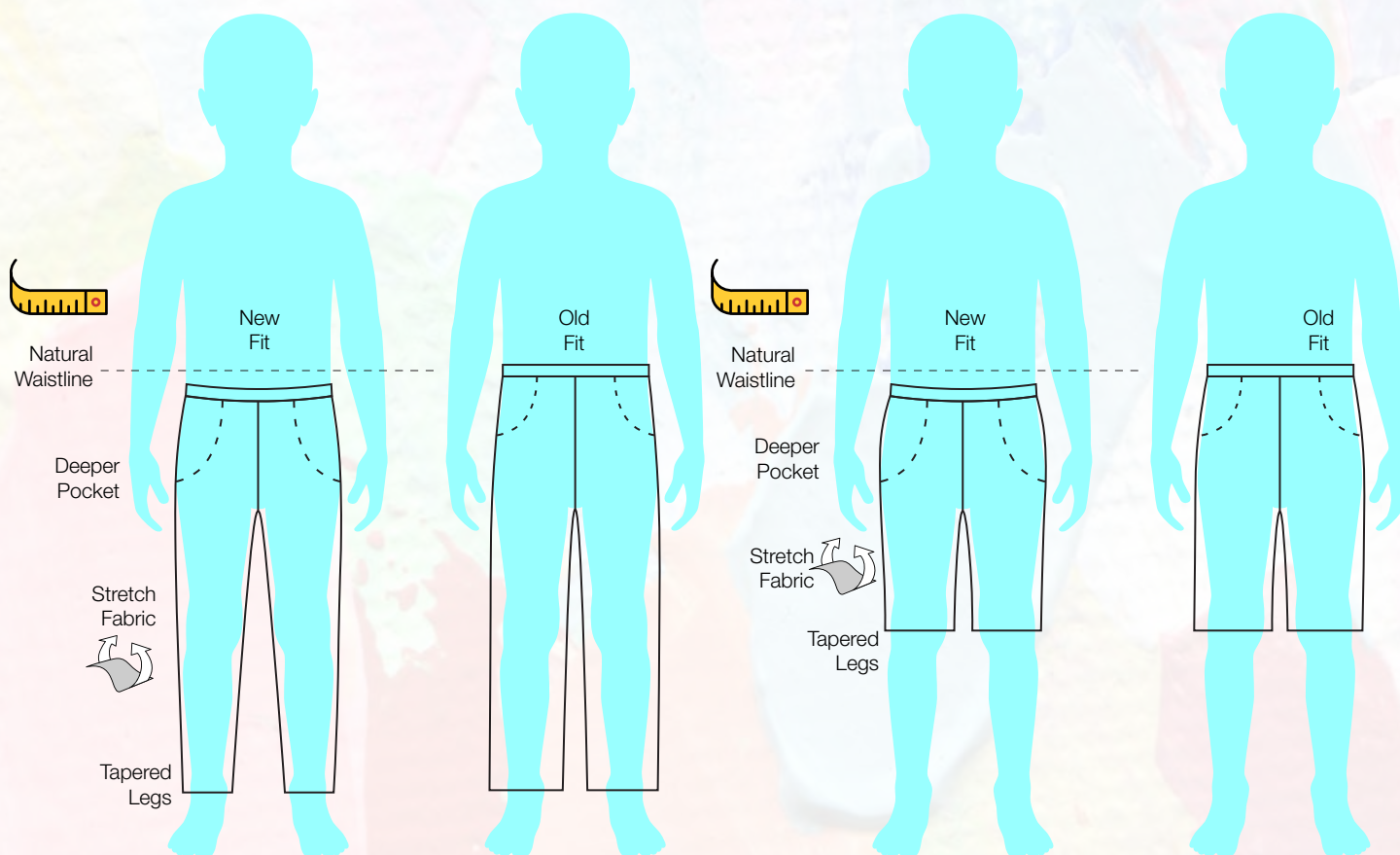
Navy

New
Green

Modern Fit Flat Front MVP Flex Twill Pants & Shorts

Natural waist lower rise | Straight, modern, tapered fit | Deeper pocket bag
Soft pocket lining | Soft hand twill fabric | Stretches & moves with you | Wrinkle & stain resistant

NOTICEABLY SOFT™ Fabric **NATURALLY COMFORTABLE™ Fit** **Guaranteed**



Kid-friendly quality and performance

At A+ we hold ourselves and our suppliers to the highest standards. Whether an item is manufactured in our Arkansas plant or in one of our other facilities, it will live up to our 1-year Wear-Tested™ Guarantee. Built-in details like these hold the key:



Reinforced stitching
Adds strength to stress points like rear pockets



Top stitching
Helps keep the fabric in place so it won't stretch out of shape



Reinforced knees
28 square inches of added coverage per knee for enhanced durability



Easy-pull zippers
A+ nylon zippers are durable, rust free, and color matched to our garments



Elastic-back waistband
Ensures a comfortable fit all day

In addition, all products are made from proprietary A+ Fabrics™ manufactured to our strict performance specifications, so you can count on them to resist fading, shrinking, and pilling – and to withstand the wear and tear of the classroom, schoolyard, and beyond.

Oxford features:

- Chest pocket
- Button-down collar
- Stain, fade, shrink, and pill resistant
- Wrinkle free
- Machine wash and dry



Neck Comfort

- Bigger Neck
- Smaller Collar Width
- Smaller Collar Point

Pocket

- Smaller Pocket
- Higher Pocket Location

Tailor Fit

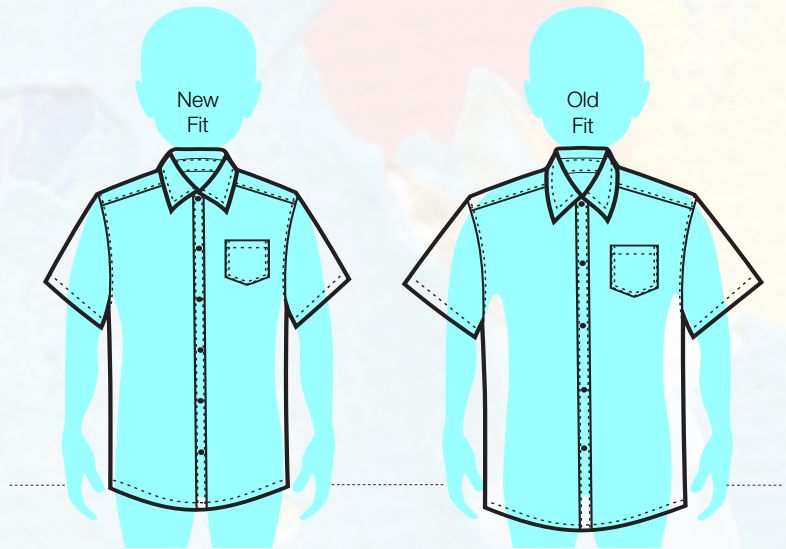
- Fitted Body Width
- Fitted Shoulder-to-Shoulder
- Smaller Arm Hole
- Smaller Sleeve Opening

Modern Length

- Shorter Body Length
- Shorter Yoke

Button

- Extra Button



Neck Comfort

- Bigger Neck
- Smaller Collar Width
- Smaller Collar Point

Pocket

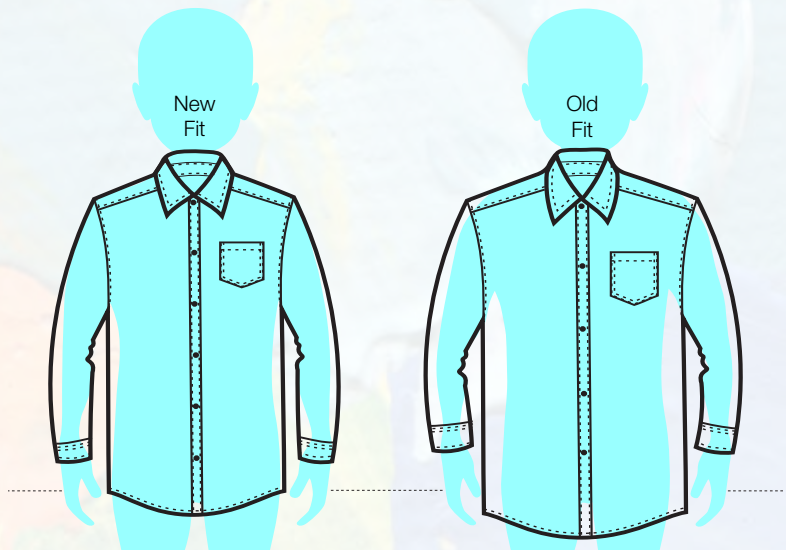
- Smaller Pocket
- Higher Pocket Location

Tailor Fit

- Fitted Body Width
- Fitted Shoulder-to-Shoulder
- Smaller Arm Hole

Modern Length

- Shorter Body Length
- Shorter Yoke
- Longer Sleeve Length
- Shorter Vent
- Smaller Cuff



8135



NEW 8135 Boys Short Sleeve Oxford Shirt

- Button down collar
- One pocket

A+ Fabrics

60% cotton / 40% polyester

Colors

Blue (BLU), White (WHI) & Yellow (YEL)

Please inquire with your Sales Rep about the availability for Blue Pinstripe (BPS).

Sizes

Youth 4-20, Adult S-3XL

8137



NEW 8137 Boys Long Sleeve Oxford Shirt

- Button down collar
- One pocket

A+ Fabrics

60% cotton / 40% polyester

Colors

Blue (BLU), White (WHI) & Yellow (YEL)

Please inquire with your Sales Rep about the availability for Blue Pinstripe (BPS).

Sizes

Youth 4-20, Adult S-3XL

Blue

White

Yellow

Blue Pinstripe



Neck Comfort

- Bigger Neck
- Smaller Collar Width
- Smaller Collar Point

Pocket

- Better Pocket Location

Tailor Fit

- Fitted Body Width
- Fitted Shoulder-to-Shoulder
- Bigger Arm Hole
- Bigger Sleeve Opening

Modern Length

- Shorter Body Length
- Shorter Yoke

Button

- Extra Button



Neck Comfort

- Bigger Neck
- Smaller Collar Width
- Smaller Collar Point

Pocket

- Better Pocket Location

Tailor Fit

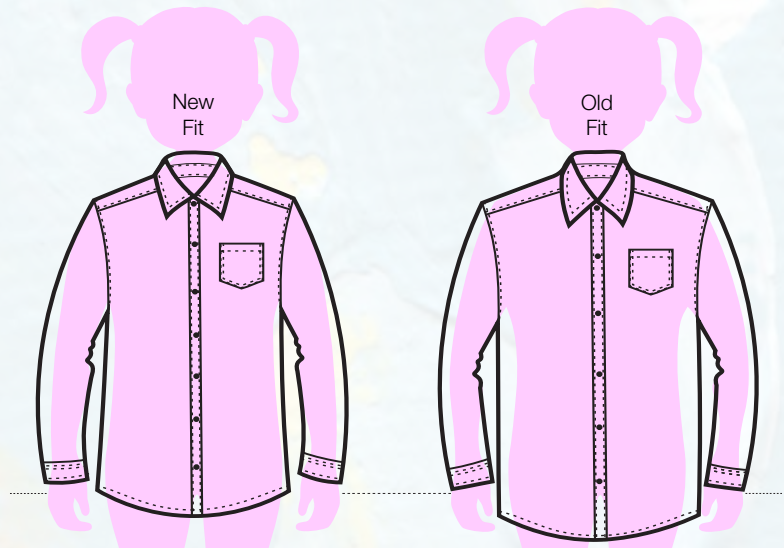
- Fitted Body Width
- Fitted Shoulder-to-Shoulder
- Smaller Arm Hole

Modern Length

- Shorter Body Length
- Shorter Yoke

Button

- Extra Button



Poplin & Oxford Blouses

Youth Sizing

YXXXS=2-3
YXXS=4-5
YXS=6-6X
YS=7-8
YM=10-12
YL=14-16
YXL=18-20

Adult Sizing

XS=28/30
S=32/34
M=36/38
L=40/42
XL=44/46
2XL=48/50
3XL=52/54

9257



9257 Girls Three-Quarter Sleeve Princess Poplin Blouse

- Tapered fit, princess seams, 3-piece back
- Classic notched collar
- Bottom vents

A+ Fabrics 65% polyester / 35% cotton

Colors Blue (BLU), Navy (NVY) & White (WHI)

Sizes Youth YS-YXL, Adult XS-3XL

NEW 9503 Girls Short Sleeve Oxford Blouse

- Button down collar
- One pocket

A+ Fabrics 60% cotton / 40% polyester

Colors Blue (BLU), White (WHI) & Yellow (YEL)

Sizes Youth 4-16, Adult XS-3XL

9503



9506



NEW 9506 Girls Long Sleeve Oxford Blouse

- Button down collar
- One pocket

A+ Fabrics 60% cotton / 40% polyester

Colors Blue (BLU), White (WHI) & Yellow (YEL)

Sizes Youth 4-16, Adult XS-3XL

How can customers extend the life of their A+ garments?



The #1 way is by following our care instructions! Please encourage all customers to follow the care instructions found at www.schoolapparel.com/product-care. Proper garment care can save families time, money, and frustration!

Ask your A+ sales rep for some free Care Instructions posters or simply print your own (8 1/2"x11") at www.schoolapparel.com/posters. They're perfect for hanging in dressing rooms, at entrances and check-out counters, on product fixtures, and anywhere else customers will see them.

Blue

Navy

White

Yellow

Peter Pan Collar Blouses

- Stain, fade, shrink, and pill resistant
- Wrinkle free
- Machine wash and dry

9381

Girls Short Sleeve Peter Pan Broadcloth Blouse

A+ Fabrics 65% polyester / 35% cotton

Colors Blue (BLU) & White (WHI)

Sizes Youth YXXXS-YXL, Adult XS-3XL



9381

Blue

White

9161

Girls Long Sleeve Peter Pan Broadcloth Blouse

A+ Fabrics 65% polyester / 35% cotton

Colors Blue (BLU) & White (WHI)

Sizes Youth YXXXS-YXL, Adult XS-3XL



9161

9361



9366
Piping

Red



White



Navy



9361 Girls Puffed Short Sleeve Broadcloth Blouse

- Piping on collar and cuffs

A+ Fabrics 65% polyester / 35% cotton

Color Body: White (WHI)

Piping: Navy (NVY), Red (RED) & White (WHI)

Sizes Youth YXXXS-YXL

9366 Girls Puffed Long Sleeve Broadcloth Blouse

- Piping on collar and cuffs

A+ Fabrics 65% polyester / 35% cotton

Color Body: White (WHI)

Piping: Navy (NVY), Red (RED) & White (WHI)

Sizes Youth YXXXS-YXL

Broadcloth shirt/blouse features:

- Stain, fade, shrink, and pill resistant
- Wrinkle free
- Machine wash and dry

9481

**Girls Classic Collar Short Sleeve
Broadcloth Blouse**

A+ Fabrics

65% polyester / 35% cotton

Color

White (WHI)

Sizes

Youth YXXXXS-YXL,

Adult XS-3XL



9481

White

9261

**Girls Classic Collar Long Sleeve
Broadcloth Blouse**

A+ Fabrics

65% polyester / 35% cotton

Color

White (WHI)

Sizes

Youth YXXXXS-YXL,

Adult XS-3XL



9261

Performance fleece features:

- Moisture wicking
- Anti-pill technology
- Performance color retention
- Lycra® rib-knit trim for shape retention, flexibility, and long wear
- Machine wash and dry



6133

6133 Performance Quarter-Zip Fleece Pullover

- 7 oz.
- Lycra® rib-knit cuffs
- Hemmed bottom

A+ Fabrics

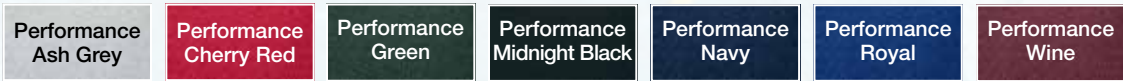
100% polyester performance fleece

Colors

Performance Ash Grey (PAS),
Performance Cherry Red (PCH),
Performance Green (PGN),
Performance Midnight Black (PMB),
Performance Navy (PNY),
Performance Royal (PRY) &
Performance Wine (PWN)

Sizes

Youth YXXS-YXL,
Adult S-3XL



6246

6246 Hooded Fleece Pullover Sweatshirt

- Kangaroo patch pocket
- Lycra® rib-knit cuffs and bottom

A+ Fabrics

100% polyester performance fleece

Colors

Ash Grey (ASH), Hunter Green (HGN) & Navy (NVY)

Sizes

Youth YXXS-YXL,
Adult S-3XL



6135



6135 Performance Quarter-Zip Fleece Pullover

- 5.2 oz.
- Moisture wicking
- Waffle weave,
- Lycra® rib-knit cuffs
- Hemmed bottom

A+ Fabrics

100% polyester performance fleece

Colors

Black (BLK), Bright Navy (BNY), Burgundy (BUR), Charcoal (CHR) & Dark Green (DGN)

Sizes

Youth YXXS-YXL,
Adult S-3XL

Black

Bright
Navy

Burgundy

Charcoal

Dark
Green

6136



6136 Ladies Performance QuarterZip Fleece Pullover

- 5.2 oz.
- Moisture wicking
- Waffle weave,
- Lycra® rib-knit cuffs
- Hemmed bottom

A+ Fabrics

100% polyester performance fleece

Colors

Black (BLK), Bright Navy (BNY), Burgundy (BUR), Charcoal (CHR) & Dark Green (DGN)

Sizes

Adult S-3XL

Black

Bright
Navy

Burgundy

Charcoal

Dark
Green

Fleecewear features:

- Fade and pill resistant
- Lycra®-blend ribbing for shape retention, flexibility, and longer wear
- Machine wash and dry

6247



6247

Full-Zip Hooded Fleece Sweatshirt

- Kangaroo patch pockets
- Lycra® rib-knit cuffs and bottom

A+ Fabrics

60% combed ring-spun cotton / 40% polyester (8.5 oz. fleece)

Colors

Ash Grey (ASH), Black (BLK), Dark Royal (DRO), Hunter Green (HGN), Navy (NVY), Red (RED) & Wine (WIN)

Sizes

Youth YXXS-YXL, Adult S-3XL

Ash Grey

Black

Dark Royal

Hunter Green

Navy

Oxford Grey

Red

Wine

6254 Fleece Crewneck Sweatshirt

- Set-in sleeves
- Lycra® rib-knit neck, cuffs, and bottom
- Cover-stitched neck, shoulders, armholes, and waistband

A+ Fabrics

60% combed ring-spun cotton / 40% polyester (8.5 oz. fleece)

Color Navy (NVY)

Sizes Toddler 2T-3T

Colors Ash Grey (ASH), Black (BLK), Dark Royal (DRO), Hunter Green (HGN), Navy (NVY), Oxford Grey (OXG), Red (RED) & Wine (WIN)

Sizes Youth XXS-XL, Adult S-3XL

6254



6295



6295 Quarter-Zip Pullover Sweatshirt

- Lycra® rib-knit cuffs
- Hemmed bottom

A+ Fabrics

60% combed ring-spun cotton / 40% polyester (8.5 oz. fleece)

Colors Ash Grey (ASH), Black (BLK), Hunter Green (HGN), Navy (NVY), Red (RED) & Wine (WIN)

Sizes Youth YXXS-YXL, Adult S-3XL

Activewear features:

- Fade and pill resistant
- Machine wash and dry

6231

6231

Pull-On Fleece Pants

- Full elastic waist
- Drawcord
- No pockets
- Hemmed legs

A+ Fabrics

60% combed ring-spun cotton / 40% polyester (8.5 oz. fleece)

Colors

Ash Grey (ASH), Black (BLK), Dark Royal (DRO), Hunter Green (HGN) & Navy (NVY)

Sizes

Youth YXXS-YXL, Adult S-3XL



6257



6257 Jersey Knit Great Modesty Shorts

- Full elastic waist

A+ Fabrics

60% cotton / 40% polyester

Colors

Ash Grey (ASH), Black (BLK), Hunter Green (HGN), Navy (NVY), Red (RED), Royal (ROY) & Wine (WIN)

Sizes

Youth YXXS-YXL, Adult S-3XL

6298

Jersey Knit Great Modesty Shorts

- Full elastic waist
- Side vents

A+ Fabrics

60% cotton / 40% polyester

Colors

Black (BLK), Hunter Green (HGN), Navy (NVY), Red (RED) & Wine (WIN)

Sizes

Youth YXXS-YXL, Adult S-3XL

6298



6252



6252

Fleece Pull-On Pants

- Full elastic waist
- Drawcord
- Elasticized leg opening

A+ Fabrics

60% combed ring-spun cotton / 40% polyester (8.5 oz. fleece)

Color

Navy (NVY)

Sizes

Toddler 2T-3T

Colors

Ash Grey (ASH), Black (BLK), Dark Royal (DRO), Hunter Green (HGN), Navy (NVY), Oxford Grey (OXG), Red (RED) & Wine (WIN)

Sizes

Youth XXS-XL, Adult S-3XL

6212



6212 Performance Mesh Gym Shorts

- A+ engineered closed-hole mesh
- Moisture wicking
- Snag resistant
- Quick-cord waistband
- Inseam: 5¼"-7" on youth sizes, 7½" on adult sizes

A+ Fabrics 100% opaque polyester

Colors

Performance Cherry Red (PCH), Performance Green (PGN), Performance Midnight Black (PMB), Performance Navy (PNY), Performance Royal (PRY) & Performance Wine (PWN)

Sizes Youth YXXS-YXL, Adult S-3XL

Performance
Cherry Red

Performance
Green

Performance
Midnight Black

Performance
Navy

Performance
Royal

Performance
Wine

Ash Grey

Black

Dark
Royal

Hunter
Green

Navy

Oxford
Grey

Red

Royal

Wine

Jackets

Outerwear features:

- Pill resistant
- High-performance zippers
- Reinforced stitching
- Machine wash and dry

6202



6202 Full Zip-Front Jacket

- 2 on-seam pockets
- Open bottom
- Fabri-Tec Fleece

A+ Fabrics 100% A+ Anti-pil performance polyester

Colors Black (BLK), Charcoal (CHG), Dark Royal (DRO), Green (GRN), Lipstick (LIP), Navy (NVY) & Wine (WIN)

Sizes Youth YXXS-YXL, Adult S-3XL

6235



6235 1/4 Zip Placket Jacket

- 2 on-seam pockets
- Fabri-Tec Fleece

A+ Fabrics 100% A+ Anti-pil performance polyester

Colors Black (BLK), Charcoal (CHG), Green (GRN), Lipstick (LIP), Navy (NVY) & Wine (WIN)

Sizes Youth YXXS-YXL, Adult S-3XL

6225



6225

Full Zip-Front Jacket

- Zippered welt pockets
- Fleece lining
- Zip-off hood

A+ Fabrics Nylon Outerwear Jacket (Self fabric: 100% nylon)

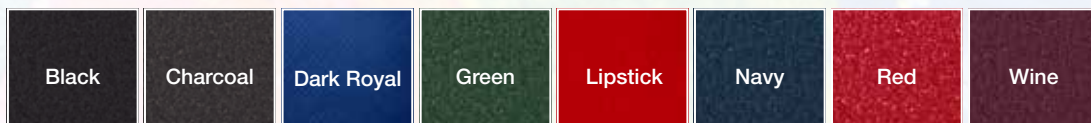
Body fleece lining: 76% polyester / 12% rayon / 12% cotton

Sleeve lining: 100% nylon,

Sleeve padding: 100% polyester

Colors Black (BLK), Green (GRN), Navy (NVY), Red (RED) & Wine (WIN)

Sizes Youth YXXS-YXL, Adult S-3XL



Blazers

Female blazers features:

- Single breasted
- 2 buttons
- Fully lined
- Notched lapel
- Center vent,
- 2 pockets
- 1 chest welt pocket

GB



GB4500 Girls GB Blazer

A+ Fabrics 100% polyester

Color Navy (NVY)

Sizes Girls 7-20

GB0500 Ladies GB Blazer

A+ Fabrics 100% polyester

Color Navy (NVY)

Sizes Ladies 2-28

BL



BL7500 Boys BL Blazer

A+ Fabrics 100% polyester

Color Navy (NVY)

Sizes Boys 4-7

BL4500 Boys BL Blazer

A+ Fabrics 100% polyester

Colors Burgundy (BUR), Green (GRN) & Navy (NVY)

Sizes Boys 8-20

BL9500 Husky BL Blazer

A+ Fabrics 100% polyester

Colors Burgundy (BUR), Green (GRN) & Navy (NVY)

Sizes Husky 8-20

BL0500 Mens BL Blazer, Regular

A+ Fabrics 100% polyester

Colors Burgundy (BUR), Green (GRN) & Navy (NVY)

Sizes Mens Regular 34-46

BLX500 Mens BL Blazer, Regular

A+ Fabrics 100% polyester

Colors Burgundy (BUR), Green (GRN) & Navy (NVY)

Sizes Mens Regular 48-56

BLZ500 Mens BL Blazer, Long

A+ Fabrics 100% polyester

Colors Burgundy (BUR), Green (GRN) & Navy (NVY)

Sizes Mens Long 34-46

BLW500 Mens BL Blazer, Long

A+ Fabrics 100% polyester

Colors Burgundy (BUR), Green (GRN) & Navy (NVY)

Sizes Mens Long 48-56

BLS500 Mens BL Blazer, Short

A+ Fabrics 100% polyester

Colors Burgundy (BUR), Green (GRN) & Navy (NVY)

Sizes Mens Short 34-46

Burgundy

Green

Navy

Male blazers features:

- Single breasted
- 2 buttons
- Fully lined
- Notched lapel
- Center vent
- 2 pockets with flap
- 1 chest welt pocket



SC77

NEW SC77 3-pack unisex crew socks

- Arch support
- A+ toe logo design

A+ Fabrics

75% rayon / 21% polyester / 4% Spandex®

Colors

Black (BLK), Grey Heather (GHE), Khaki (KHK), Navy (NVY) & White (WHI)

Size S-XL



SC63

NEW SC63 3-pack girls footie

- Arch support
- A+ toe logo design

A+ Fabrics

75% rayon / 20% polyester / 5% Spandex®

Color

White (WHI)

Sizes S-L



SC25

NEW SC25

3-pack girls premium cable knee-hi

A+ Fabrics

70% acrylic / 26% nylon / 4% Spandex®

Colors

Black (BLK), Green (GRN), Grey Heather (GHE), Lipstick (LIP), Navy (NVY), White (WHI) & Wine (WIN)

Sizes S-L



SC55

NEW SC55

3-pack girls opaque knee-hi

- Arch support
- A+ toe logo design

A+ Fabrics

97% micro-fiber nylon / 3% Spandex®

Colors

Black (BLK), Green (GRN), Lipstick (LIP), Navy (NVY), White (WHI) & Wine (WIN)

Sizes S-L



SC69

NEW SC69

3-pack girls anklet

- Arch support
- A+ toe logo design

A+ Fabrics

56% cotton / 29% nylon / 12% polyester / 3% Spandex®

Colors

Navy (NVY), Powder Blue (PBL) & White (WHI)

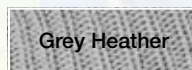
Sizes S-L



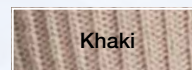
Black



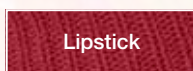
Green



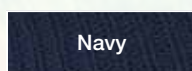
Grey Heather



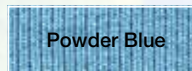
Khaki



Lipstick



Navy



Powder Blue



White



Wine

A+ Socks Rack



Please inquire with your
Sales Rep about our
A+ Socks Rack.

Outstanding New Hosiery

- New Look
- Happy healthy feet
- More stretch
- Moisture wicking
- Seamless toes
- Enhanced yarn



NEW SC35 Single-pack girls flat knit tight

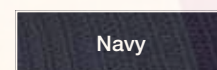
- Comfort flat seam toe
- Full elastic waistband

A+ Fabrics 80% rayon from bamboo / 15% polyester / 5% Spandex®

Colors Black (BLK), Navy (NVY) & White (WHI)

Sizes 2/4-12/14

Sizing: 2/4, 4/6, 6/8, 8/10, 10/12, 12/14





**Aprons, Chef Coats,
Server/Bar Vests, Face Masks,
and Custom Branded & Logo
Apparel for various
industries.**

From fine dining, to casually cool, to fun food trucks, to some of the other best eating establishments around, we outfit many of the nation's top chefs, culinary all-stars, aspiring chefs and food service professionals.

From world renown resorts to grocery stores, to bakeries and bars, to tech companies and salons, to anybody else who wears unique image apparel, we also service a plethora of amazing clients in the hospitality and consumer goods industries.

Handcrafted locally in the USA with love, pride, appreciation and respect for our global community of peers and partners.

We actively support and contribute to many worthwhile causes, including No Kid Hungry, various cancer, heart, special needs and veteran organizations, environmental and wildlife agencies, and SPCA. Just to name a few.





Style: 1999 Short Sleeve Executive Chef Coat

- 100% Combed Cotton Fabric
- Welt and Pen Pockets
- Stand Collar
- Handcrafted, Cloth-Covered Buttons
- Eyelet Vent Holes
- Unisex
- Available in White, Charcoal & Black
- Unisex sizes: XS-5XL (Reg), S-5XL (Long)



Style: 2000 Long Sleeve Executive Chef Coat

- 100% Combed Cotton Fabric
- Welt Pocket & Pen Pocket
- Stand Collar
- Handcrafted, Cloth-Covered Buttons
- Eyelet Vent Holes
- Unisex
- Available in White, Charcoal & Black
- Unisex sizes: 30-60 (Reg), 38-60 (Long)



Style: 0630 The Brody Bib Apron

The ranch tan leather neck strap is adjustable and removable via brass snaps and the waist ties are ranch tan, 100% cotton webbing. This bib apron features 2 corner-cut pockets with wine pocket on the skirt front and 1 corner-cut, double-pen pocket on the bib for ultra-convenience. All pockets have double-needle top stitching and brass jean rivets.

- 100% cotton, 10oz. duck canvas
- Available in Charcoal, Moss, Navy, Rust & Steel Grey
- One size



Style: 0600 The Lulu Bib Apron

Narrow Denim Stripe, 100% Cotton Denim Euro Bib Apron is highly Customized with Removable 1" Wide Natural Webbing Straps that Cross in the Back, Thread through Nickel Grommets at the Waist and Attach at the Top of the Bib Through Antique Nickel D-Ring and Snap Closures.

Other details include a Corner Cut Double Pen Pocket on the Bib, Reinforced Panel at the Center Front and Double-Needle Top Stitching. Straps are Extra Long to Tie in Front.





Style: 3200 Men's Traditional Tailored Vest

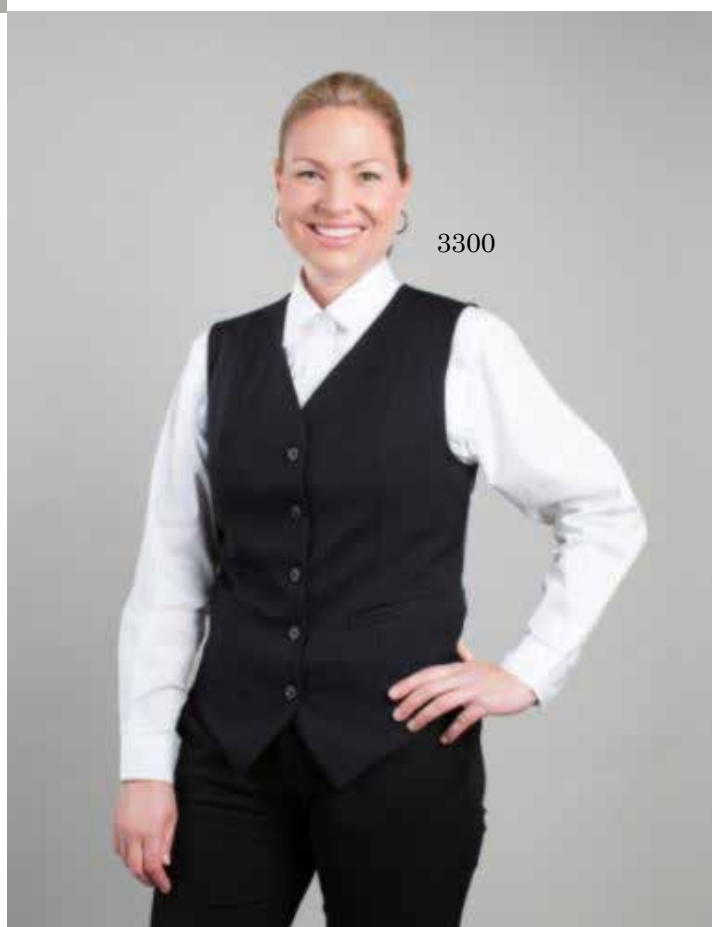
Classic and tailored, our Men's Traditional Tailored Vest is a smart way to add sophistication to your restaurant uniform. Each vest features two front welt pockets, five-buttons, an adjustable back belt and two inside pockets. All vests are finished with a black back, belt and lining. Dry Clean Only.

- Available in
Black Poly,
Grey Shadow Stripe Poly &
Black Fine Wool
- Available in
S-3XL (Reg)
M-3XL (Long)

Style: 3300 Women's Traditional Tailored Vest

Classically tailored specifically for women, our Women's Traditional Tailored Vest is a smart way to add sophistication to your restaurant uniform. Each vest features princess line seams, two front welt pockets, five-buttons, an adjustable back belt and two inside pockets. All vests are finished with a black back, belt and lining. Dry Clean Only.

- Available in
Black Poly
Grey Shadow Stripe Poly
Black Fine Wool
- Available in
XS-2XL





IG3000

Style: IG3000 - Unisex Disposable Gown

AAMI Level 1 isolation gown

- Crew Neck
- Stitched Seams
- Long Sleeves
- Elastic Cuffs
- Tie Waist and Neck.

100% Polypropylene - SMS

One Size Fits All - White



IG4000

Style: IG4000 - Unisex Disposable Gown

AAMI Level 2 isolation gown

- Crew Neck
- Ultrasonic Welded Seams
- Long Sleeves
- Thumbhole
- Tie Waist and Neck.

100% Polypropylene - SMS

One Size Fits All - Blue



RG2001



Style: RG2001 - Unisex ReUSABLE Isolation Gown

AAMI Level 2 isolation gown

- Crew Neck
- Stitched Seams
- Long Sleeves
- Knit Cuffs
- Tie Waist and Neck

100% Polypropylene - SMS

One Size Fits All - White



LC1000



Style: LC1000 - Unisex Disposable Lab Coat

AAMI Level 1 isolation coat

- UltraSonic Weld Seams
- Long Sleeves
- Elastic Cuffs
- 3 Button Front
- 3 Front Pockets

100% Polypropylene - SMS

One Size Fits All - White



A+ School and Career Territory

David Reif

dreif@apluseveryday.com

Vice President of Sales

Cell: (201) 406-7610

Phone: (800) 227-3215, Ext. 2424

Aurora Alvarez

aalvarez@apluseveryday.com

AK, AZ, CA, CO, HI, ID, MT, MX, NM, NV,

OR, PR, UT, WA, WY, Western Canada

Cell: (415) 823-7344

Phone: (800) 227-3215, Ext. 2427

Fax: (800) 277-2272

Jeff Markowitz

jmarkowitz@apluseveryday.com

CT, DC, DE, IL, IN, KY, MA, MD, ME, MI, NH, NJ,

NY, OH, PA, RI, VA, VT, WV, WI, Eastern Canada

Cell: (617) 653-2111

Phone: (800) 227-3215, Ext. 2423

Steve Royal

sroyal@apluseveryday.com

Vice President of School Sales

GA, FL, MN, NC, SC

Cell: (336) 214-2865

Phone: (800) 227-3215, Ext. 2434

Educational Outfitters

and Academic Outfitters Nationwide

Sherri Lance

slance@apluseveryday.com

AL, AR, IA, KS, LA, MO, MS, NE, ND, OK, SD, TN, TX

Cell: (314) 359-5475

Phone: (800) 227-3215, Ext. 2432

Gretchen Boland

gboland@apluseveryday.com

Phone: (800) 227-3215, Ext. 2207

Lester Reif

lreif@apluseveryday.com

Cell: (201) 805-5700

Phone: (800) 227-3215, Ext. 2450

Tracy Hutchinson

thutchinso@apluseveryday.com

Cell: (702) 203-3421

Phone: (800) 227-3215, Ext. 2451

Dwight Burr

dburr@apluseveryday.com

Customer Service Manager

(800) 227-3215, Ext. 3278

Knowing A+ is loving A+

When you choose A+ School Apparel, you get made-to-last quality from America's school uniform leader – along with personal service and year-round inventory support. Go with the brand you can trust.



Daily Wear . Easy Care Custom design and special orders to meet any school's needs

If our in-stock items don't meet a school's needs, we're always ready to develop a custom program. The A+ design team has created hundreds of alternate patterns and can always customize a style to fit a school's specific requirements. Call your A+ sales rep to learn more about custom programs.

Embroidery services for consistent brand identity

Our in-house embroidery service just makes sense for retailers and the schools they serve. Here are some of the many benefits to using A+ as a one-stop source:

- Competitive pricing
- Hassle-free service and quality control
- Easy ordering through your online storefront
- Comprehensive embroidery capabilities, including tape digitizing
- Packaging the way you want it – fan-fold, poly-bag, or other method
- Free setup if you provide a viable embroidery disk
- Time savings over using a third-party embroiderer



EDI, B2B, and e-commerce services to match your business process

Retailers doing business with A+ School Apparel can choose from a variety of order management options:

- Our proprietary B2B website (vip.apluseveryday.com), which enables order entry and tracking, inventory inquiry and management, invoice and statement printing, and more
- EDI, including standard transactions such as 850, 855, 810, 856, 820, and 997
- Customized web services for information exchange
- Information sharing via FTP and email

Your customer service representative is always ready to answer questions about any of these methods.

Merchandising support to help boost sales

A+ offers retailers a variety of sales tools, including point-of-purchase posters. In addition, our sales managers and marketing specialists are always ready to offer suggestions for improving your store's configuration to attract and accommodate customers and enhance the overall appeal.

Size charts available

If you have questions about sizing, please call your A+ sales rep. We'll be happy to provide size charts and answer any of your sizing questions.

Top 9 reasons to choose A+

1



One-year Wear-Tested™ Guarantee

A+ garments give companies everything they need in career apparel and uniforms—easy-care fabrics, maximum durability, consistent colors, and a great fit. We're so sure of our quality that if any garment doesn't stand up to one year of normal wear, we'll replace it.

2



Durable, colorfast fabrics for consistent brand identity

All of our products are made from proprietary A+ Fabrics™ manufactured to our strict performance specifications, so you can count on consistent color and lasting value.

3



Capable customer care to save you time

Each A+ customer has a dedicated customer service rep who can answer product and inventory questions, track orders, and make forecasts. Service reps work together with sales managers to deliver the service and product solutions you need.

4

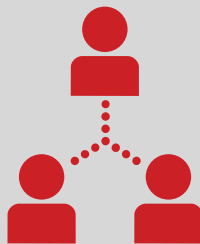


Earth-conscious commitment

A+ is committed to:

- Minimizing waste
- Recycling and using recycled materials
- Not using harmful substances on or in our products
- Using energy-saving lighting in our factories and offices
- Looking for earth-friendly solutions wherever possible

5



B2B and e-commerce services to simplify transactions

As an A+ customer, you will have access to our business-to-business web portal, which allows you to place orders and view pricing, inventory availability (in-stock and custom), open orders, order history, shipment status, invoices, statements, and more.

6



Custom programs to meet unique needs

In addition to stocking a wide array of careerwear basics, A+ creates custom uniform programs for clients in a range of industries. If you'd like to discuss your company's custom apparel needs, please contact your sales representative.

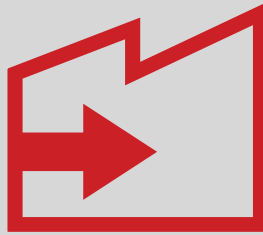
7



Next-day shipping from our extensive in-stock inventory

At A+ we believe in quick turnarounds. All orders placed from our extensive in-stock inventory ship the next day, so customers get the apparel they need when they need it.

8



Centrally located facilities for faster, lower-cost delivery

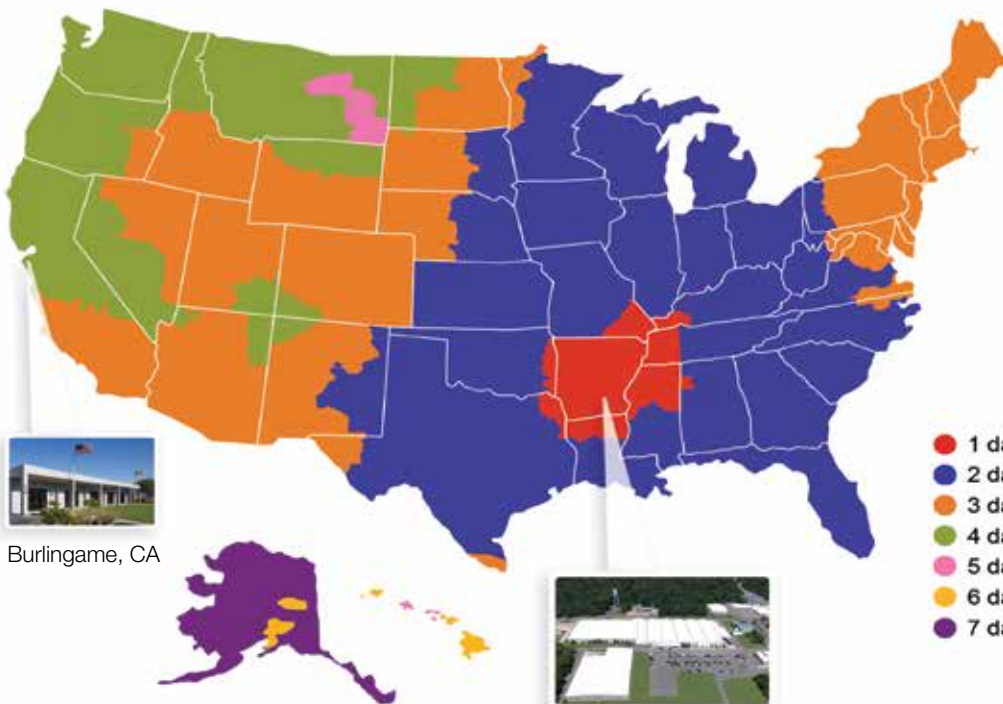
All orders are shipped from our manufacturing and distribution center in Arkansas. This central location allows lower freight charges and shorter transit times across the United States and Canada. Shipping charges appear on the same invoice as the order.

9



Vertical integration, U.S. manufacturing capabilities

As America's leading manufacturer, A+ is proud to offer full U.S. production capabilities. Thanks to our automated knitting mill, garment factory, and distribution facility in Arkansas, we can provide design, manufacturing, embroidery, and inventory management services in house.



Burlingame, CA



Star City, AR

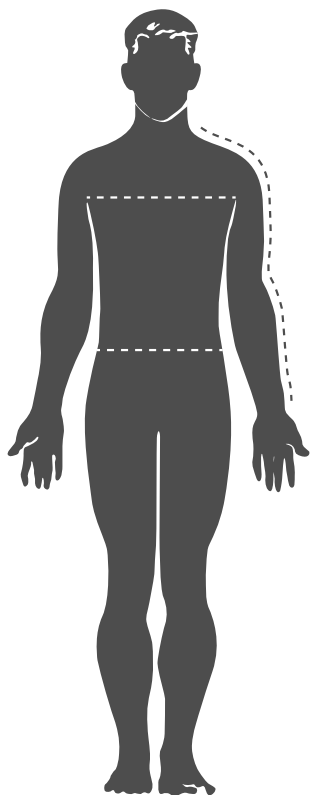
Ready to order?

Please call **877-632-7587**

toll free to talk to one of our friendly customer service representatives.



A+ garments are made for comfort and ease of movement. If you're not sure what size to order, take some measurements and use our size charts on the next pages to find the right fit. For both women and men, we recommend measuring over your undergarments, not over other clothing. Wrap a tape measure comfortably around your body; don't make it too tight. You might have to have someone help you.



Neck

Measure around the lower part of the neck.

Chest/Bust

Measure around your shoulder blades and the fullest part of your chest, keeping your arms comfortably at your sides.

Waist

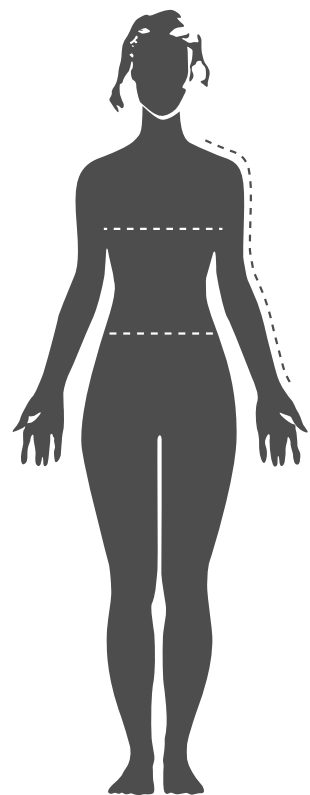
Measure around your natural waistline (for men, just below your navel).

Sleeve Length

Measure from the center of the back of your neck, over the top of your shoulder, and down to your wrist. Keep your arms comfortably at your sides.

Inseam

Take this measurement from a nice-fitting pair of pants of a similar style. Measure the garment inseam from the crotch seam to the hem.



Garment Size Charts

(not body fit)

The fit and comfort of any garment will depend on your personal preferences, so these size charts are simply a guide. If you have questions about sizing, please call your dedicated customer service representative at 877-632-7587. We'll be happy to answer your questions!

SWEATERS

Men's/Unisex	S	M	L	XL	2XL	3XL	4XL	5XL
Chest	40	43	46	50	54	58	62	66
Sleeve Length	32½	33½	34½	35½	36½	37½	37½	37½
Women's	S	M	L	XL	2XL	3XL	4XL	5XL
Chest	38	40	43	46	49	52	55	58
Sleeve Length	30	31	32	32	33	33	33	33

KNIT SHIRTS

Men's/Unisex	S	M	L	XL	2XL	3XL	4XL	5XL
Neck	15	15	16	16	18	18	18	18
Chest	38	42	46	50	54	58	62	66
Long Sleeve	34½	36	37½	39	40½	41	41⅝	42¼
Short Sleeve	19¾	20½	21¼	22	22¾	23	23¼	23½
Women's	S	M	L	XL	2XL	3XL		
Chest	38	41	44	47	50	53		
Short Sleeve	15	16	17	18	19	20		
Women's	S	M	L	XL	2XL	3XL		
Chest	39	42	44	46	48	50		
Short Sleeve	13⅝	14⅛	15⅜	16⅞	17⅜	17⅞		

Note: All measurements are in inches

WOVEN SHIRTS									
Men's Poplin		S	M	L	XL	2XL	3XL	4XL	5XL
Neck		16	17	18	19	20	21	22	23
Chest		47	49	51	55	59	63	67	71
Long Sleeve		32	33¼	34½	35¾	37⅞	38¼	38½	38¾
Short Sleeve		18¼	19½	20¾	21	21¼	21½	21⅝	21¾
Men's Oxford		S	M	L	XL	2XL	3XL	4XL	5XL
Neck		16	17	18	19	20	21	22	23
Chest		46	48	50	54	58	62	66	70
Long Sleeve		32	33¼	34½	35¾	37⅞	38¼	38½	38¾
Short Sleeve		18¼	19½	20¾	21	21¼	21½	21⅝	21¾
Men's Broadcloth		S	M	L	XL	2XL	3XL	4XL	5XL
Neck		16	17	18	19	20	21	22	23
Chest		46	48	50	54	58	62	66	70
Long Sleeve		32	33¼	34½	35¾	37⅞	38¼	38½	38¾
Short Sleeve		18¼	19½	20¾	21	21¼	21½	21⅝	21¾
Men's Aviator	XS	S	M	L	XL	2XL	3XL	4XL	5XL
Neck	15	16	17	18	19	20	21	22	23
Chest	45	47	49	51	55	59	63	67	71
Long Sleeve	31⅝	32⅞	33⅞	35	36	36⅜	36⅝	36⅞	37⅞
Short Sleeve	21	21½	22	22½	23¼	24	24¾	25½	26¼
Women's Poplin	XS	S	M	L	XL	2XL	3XL		
Neck		16¼	16¾	17¼	17¾	18¼	18½		
Chest		43½	46½	49½	52½	58½	61½		
Long Sleeve		31	32	33	33½	35	35½		
Short Sleeve		17⅜	18⅞	19⅞	19¾	21⅜	22		
Women's Oxford	XS	S	M	L	XL	2XL	3XL	4XL	5XL
Neck	15¾	16¼	16¾	17¼	17¾	18¼	18½	18¾	19
Chest	40½	43½	46½	49½	52½	58½	61½	64½	67½
Long Sleeve	29¾	31	32	33	33½	35	35½	36	36½
Short Sleeve	16⅜	17⅜	18⅞	19⅞	19¾	21⅜	22	22⅝	23¼
Women's Broadcloth		S	M	L	XL	2XL	3XL		
Neck		15	15½	16	16½	17	17½		
Chest		40½	43½	47	49	52	54		
Long Sleeve		32⅞	32¾	34	35	36	36⅝		
Short Sleeve		16⅜	17	18	19	20	20¾		

Note: All measurements are in inches

PANTS AND SHORTS																		
Men's	28	30	32	33	34	36	38	40	42	44	46	48	50	52	54	56	58	60
Waist	28	30	32	33	34	36	38	40	42	44	46	48	50	52	54	56	58	60
Pants Inseam	M = 30" L = 32" XL = 34" W = 37" Open Bottoms																	
Shorts Inseam	8¾	9	9¼	9⅜	9½	9⅝	9¾	9⅞	10	10⅛	10¼	10⅜	10½	10⅝	10¾	10⅞	11	11⅛

Women's	2	4	6	8	10	12	14	16	18	20	22	24	26	28	30
Waist	25½	26½	27½	28½	29½	31	32½	34	36	38	40	42	44	46	48
Pants Inseam	30½	30½	30½	30½	31½	31½	31½	31½	32½	32½	32½	32½	32½	32½	32½
Shorts Inseam	8½	8½	8½	8½	8½	8½	8½	8½	8½	9	9	9	9	9	9
Junior	0	1	3	5	7	9	11	13	15	17	19	21	23	25	27
Waist	27	28	29	30	31½	33	34½	36	37½	39	40½	42	43½	45	46½
Pants Inseam	31½	31½	31½	31½	31½	32½	32½	32½	32½	33½	33½	33½	33½	33½	33½
Junior Mid-Rise	0	1	3	5	7	9	11	13	15	17	19	21	23	25	27
Waist	27	28	29	30	31	32	33½	35	36½	38	39½	41	42½	44	45½
Pants Inseam	31½	31½	31½	31½	31½	32½	32½	32½	32½	33½	33½	33½	33½	33½	33½
Shorts Inseam	8½	8½	8½	8½	8½	8½	8½	8½	8½	8½	9	9	9	9	9

OUTERWEAR AND SWEATSHIRTS								
Unisex Jackets	S	M	L	XL	2XL	3XL	4XL	5XL
Chest	44	49	53	55	57	59	61	63
Sleeve Length	33	34¾	36¼	37	37¾	38½	38½	39¼
Unisex Sweatshirts	S	M	L	XL	2XL	3XL		
Chest	40	44	48	52	56	60		
Sleeve Length	33½	34½	35½	36½	36½	36½		

Note: All measurements are in inches



Career Apparel

Visit APlusCareerApparel.com to see the full line of A+ products.

Corporate Headquarters: Burlingame, California
Manufacturing & Distribution Center: Star City, Arkansas

Customer Service: 877-632-7587
7:00 AM–7:00 PM Central Standard Time (CST)

Fax: 888-628-9020

info@apluscareerapparel.com
www.apluscareerapparel.com
Facebook: A+Careerwear



65922



20140201