

2021

Corporate Apparel Essentials

Stock & Custom Uniform Programs | Fulfillment

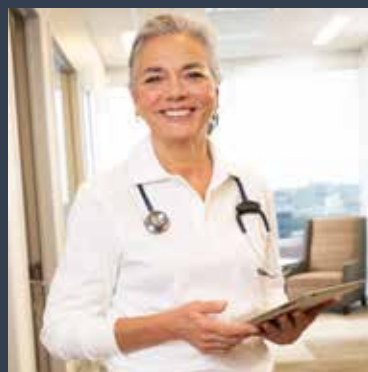
Transportation | Transit

Public Safety | Security

Hospitality

Healthcare

US Postal Service Uniform Manufacturer | USA



Career and Corporate Apparel

PROGRAM SOLUTIONS 4-11

Transportation	4
Public Safety	5
Hospitality	8
Healthcare	10

SWEATERS / BLAZERS 12-23

Fine Gauge	12
Jersey	14
Heavyweight	20

WOVEN SHIRTS 24-31

Hospitality	24
Poplin	28
Aviator	30
Oxford	31

KNIT SHIRTS 32-35

Moisture Management	32
Piqué Knit	33
Jersey Knit/Turtleneck	34

PERFORMANCE WEAR 36-37

Jackets	36
Fleece / Sweatshirts	37

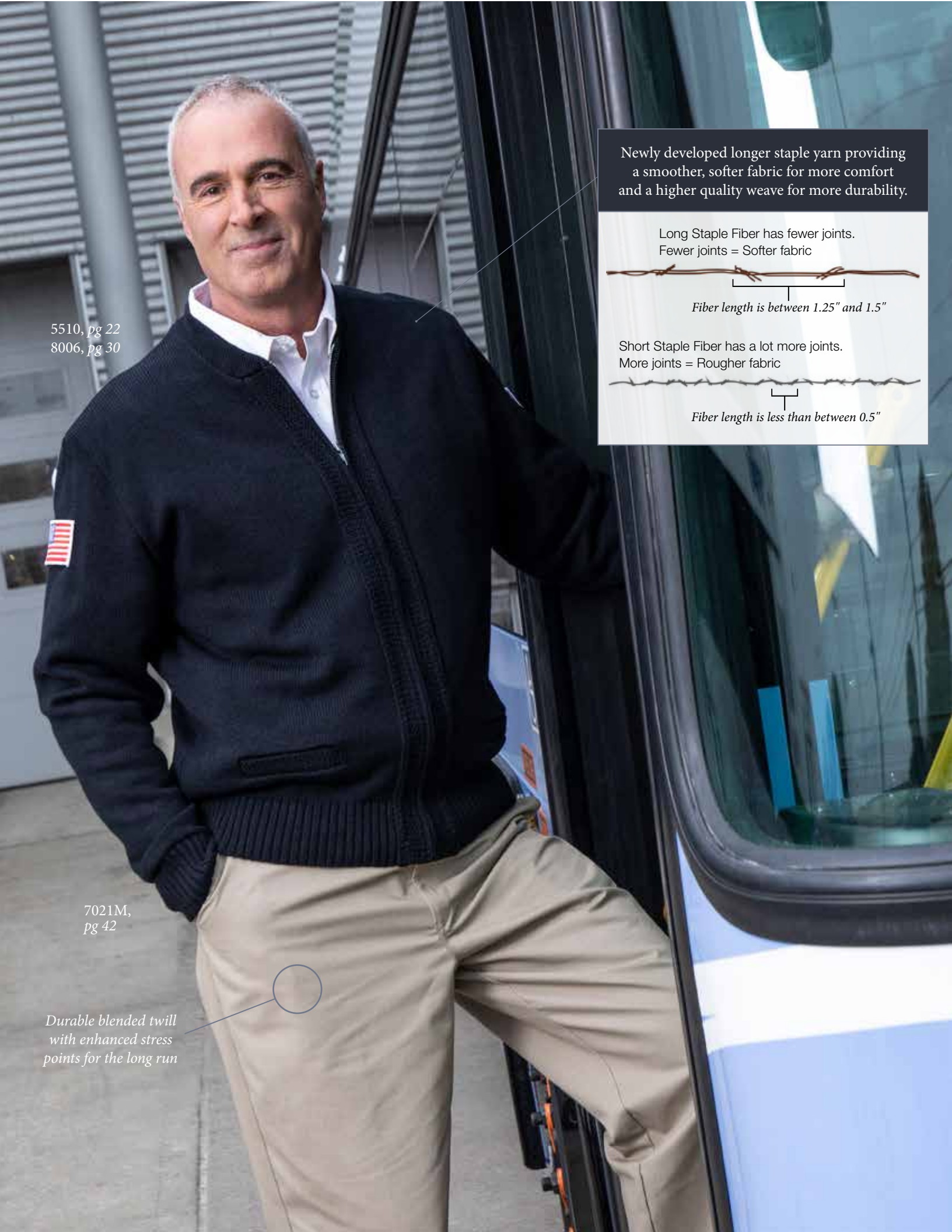
PANTS & SHORTS 38-44

Men's & Women's Hospitality	38
Men's & Women's Cargo	40
Men's	42
Women's	44

Company Information 45-47

How to Measure 48

Size Charts 49-51



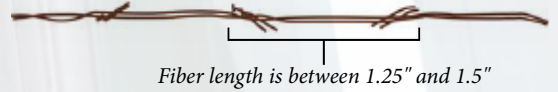
5510, pg 22
8006, pg 30

7021M,
pg 42

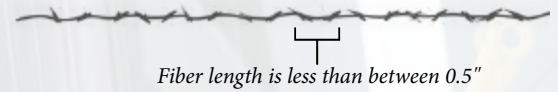
Durable blended twill
with enhanced stress
points for the long run

Newly developed longer staple yarn providing
a smoother, softer fabric for more comfort
and a higher quality weave for more durability.

Long Staple Fiber has fewer joints.
Fewer joints = Softer fabric



Short Staple Fiber has a lot more joints.
More joints = Rougher fabric



TRANSPORTATION

Miles of Comfort

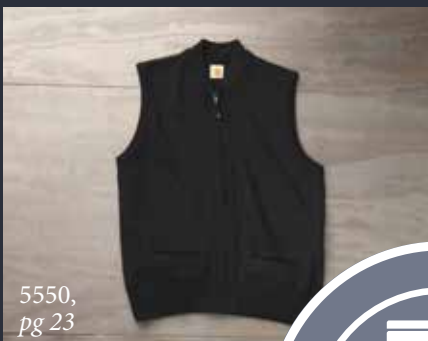
Soft yet rugged, these heavyweight sweaters withstand tough treatment.



Sharp, classic uniform options that keep you comfortable and in full command of the day.

Get the timeless look you want with our cardigans.

6300,
pg 16



8066,
pg 30



Wardrobe classics: easy-wearing, well-tailored oxford shirts.

7021M,
pg 42



Wear-tested trousers: comfort in a variety of workplace styles.

PUBLIC SAFETY In Command

Functional durability with performance-focused styling to keep you maneuvering at your best in every situation.

Aviator shirts are a wardrobe staple in security, transit, and parking industries.



8006,
pg 30

8002,
pg 30

Versatile, easy-care knits: classic workplace style with A+ durability.



8952,
pg 32



8103,
pg 34

8100,
pg 34
Blue (non-stock color)

Turtleneck or mock, these welcoming knits keep you warm when winter's chill sets in.



5953,
pg 20

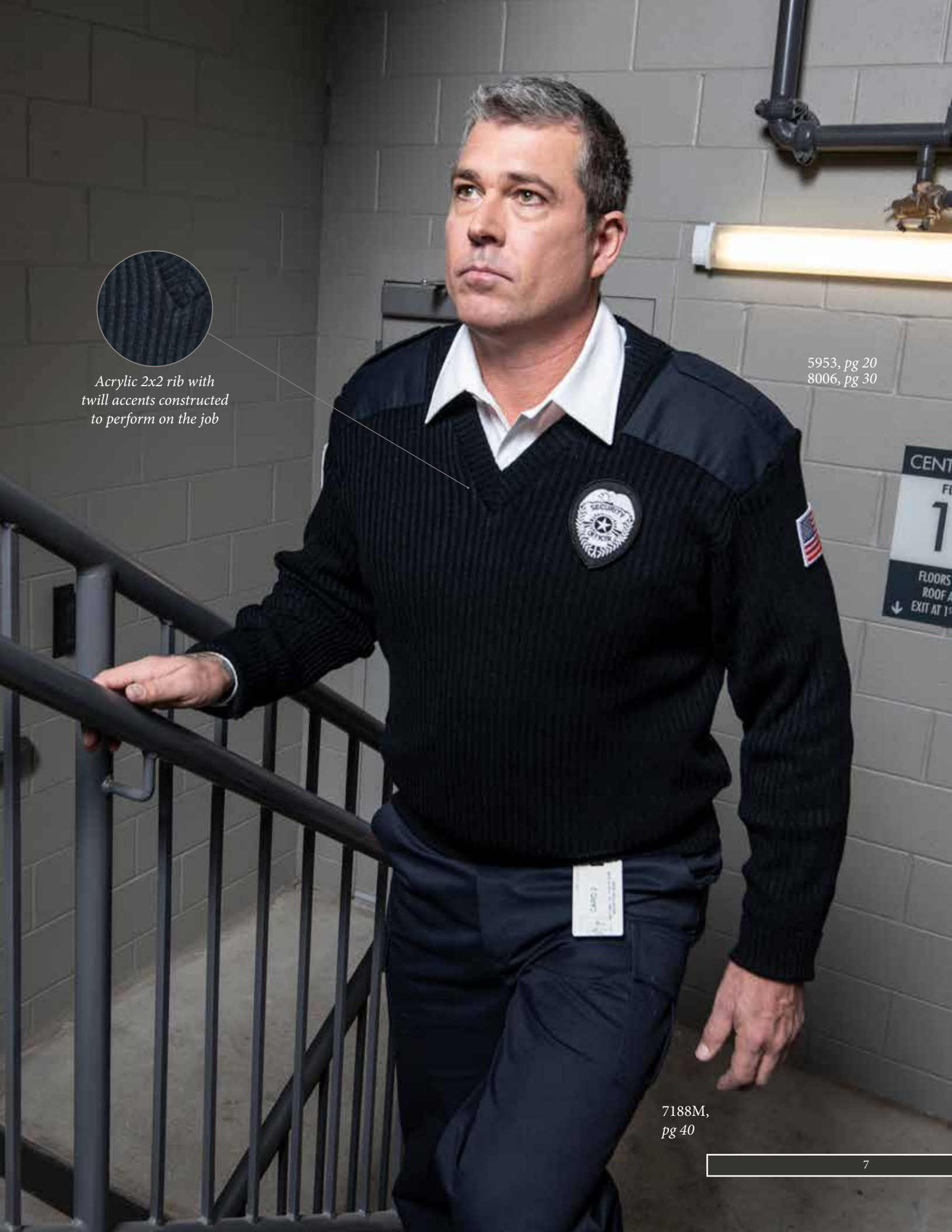
5955,
pg 20

Our Commando sweaters: the #1 choice for law enforcement and emergency pros.



*Acrylic 2x2 rib with
twill accents constructed
to perform on the job*

5953, pg 20
8006, pg 30



7188M,
pg 40



*Covered placket and
dyed-to-match buttons for
a professional appearance*

*Modern styling with stain,
fade, shrink and
wrinkle resistant performance*

8208,
pg 26

7917M,
pg 38

HOSPITALITY

Service a Step Above

The right amount of warmth with our assortment of sweater weights.



6300,
pg 16

6745,
pg 16

Modern styling with a modest attitude keeps you looking and feeling confident and approachable.

Stand up or spread collar options: premium quality and comfort for fast-paced environments



8209,
pg 25

8208,
pg 26



7917M,
pg 38

7919M,
pg 38



Our hospitality pants come with or without pockets and offer gripper trimmed waist bands to keep shirts tucked in and professional.

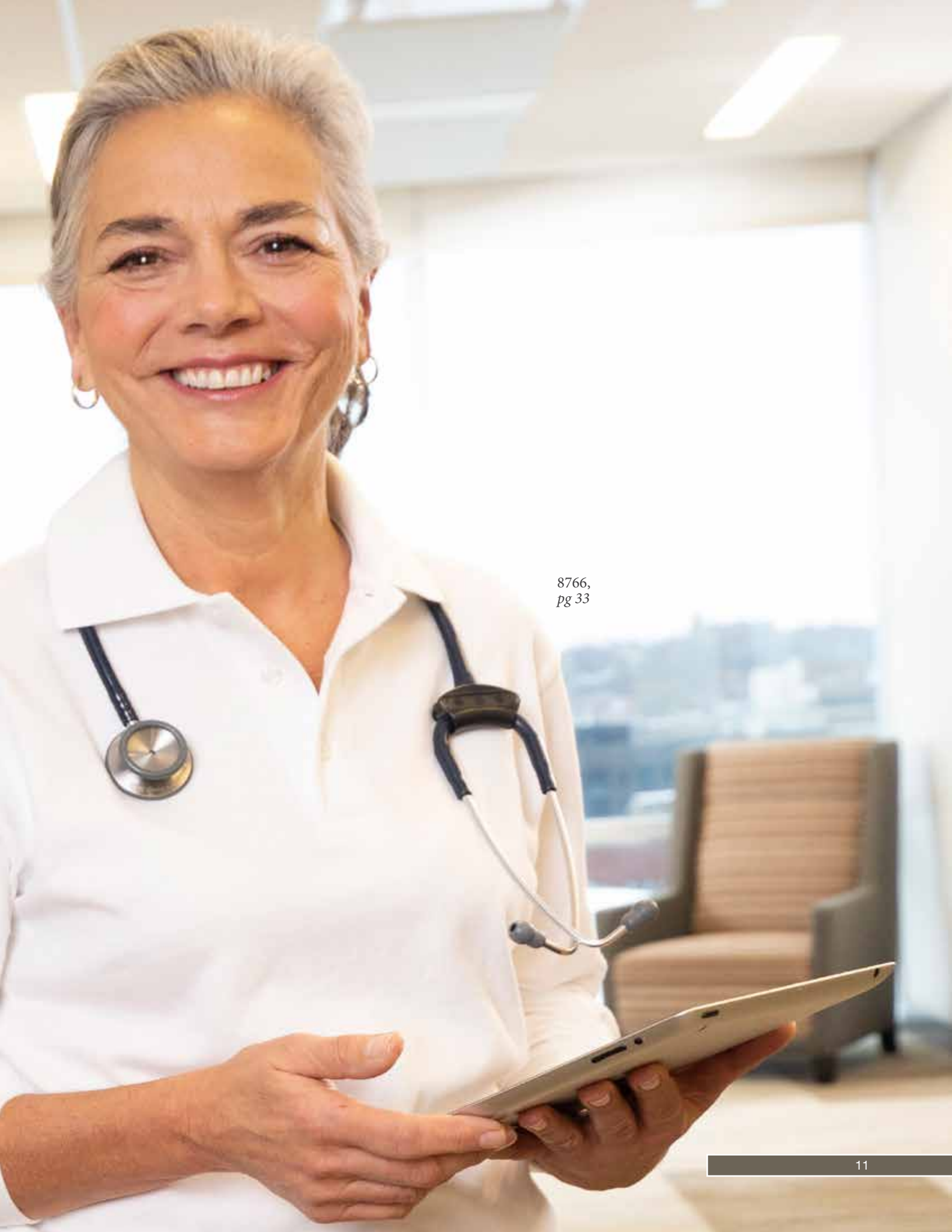
With A+ apparel, you get it all — crisp, consistent colors, versatile sizing, easy-care construction, and guaranteed quality.

HEALTHCARE

Dependable Care

In the exam room or office our
styles compliment your profession
and promote a sense of calmness
and trust to those you help.
Would you have it any other way?





8766,
pg 33

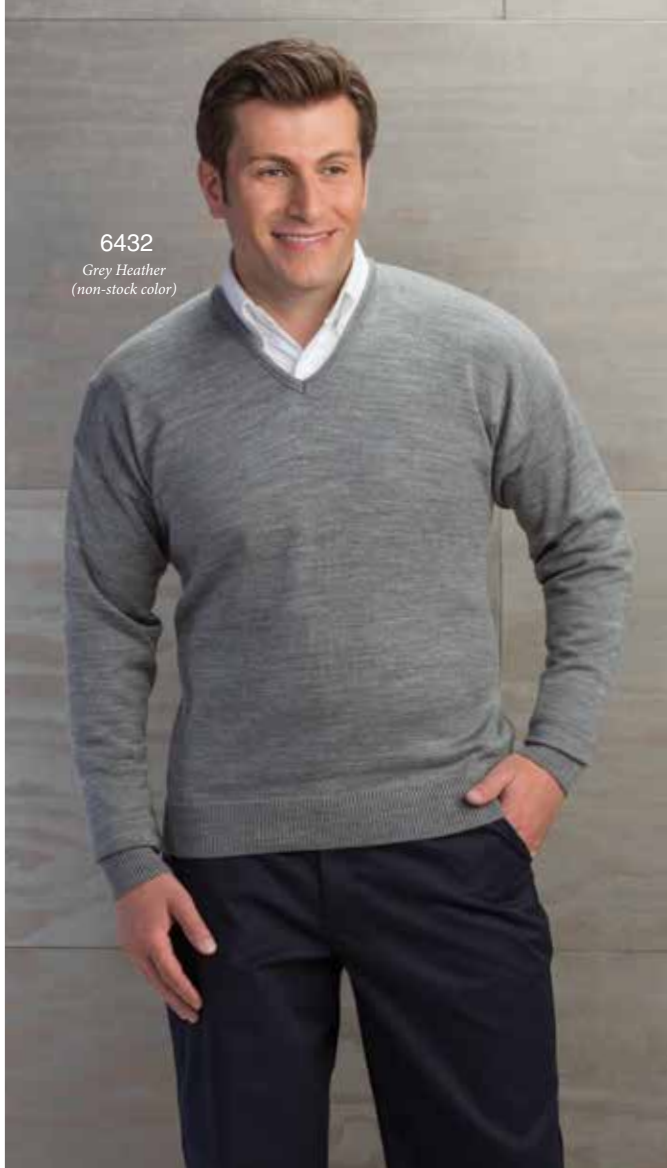


4917

4915

Layers That Last

Our soft, resilient sweaters offer easy warmth with professional style



A+ Performance Fine-Gauge Sweaters:

- **Guaranteed quality**
- A+ Fabrics: 100% acrylic
- Half-milano knit
- Stain, fade, shrink, and pill resistant
- Soft to the touch
- Perfect year-round weight
- Easy care: machine wash and dry

4917 Women's Fine-Gauge 8-Button Crewneck Cardigan

- Falls below waist
- Rib-knit cuffs and waist

Colors: Black, Lipstick, Navy, Passion Pink
Sizes: S-5XL

4915 Women's Fine-Gauge 7-Button Tunic-Length V-Neck Cardigan

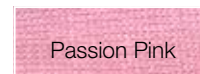
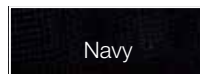
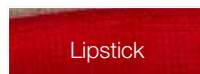
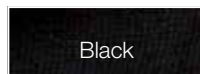
- Side vents
 - 2 patch pockets
- Colors: Black, Navy
Sizes: S-5XL

6432 Men's Fine-Gauge V-Neck Pullover Sweater

Colors: Black, Navy
Sizes: S-5XL

6430 Women's Fine-Gauge 5-Button V-Neck Cardigan

- Pairs with #4918 to make a twinset
 - Falls below waist
- Colors: Black, Navy
Sizes: S-5XL



6600



Grey Heather

White

Wine

Charcoal Heather

Powder Blue

Lipstick

Navy

Mulberry

Spruce Green

Purple

Mayfair

Cardinal

Brown

Green

Black



**A+ Performance
Jersey Knit
Sweaters:**

- **Guaranteed quality**
- A+ Fabrics:
100% acrylic
- Stain, fade,
shrink, and pill
resistant
- Elasticized rib-knit
waist for shape
retention
- Easy care:
machine wash
and dry

**6600 Unisex Jersey
Knit V-Neck Pullover
Sweater Vest**

Colors: Black, Cardinal,
Green, Grey Heather, Lipstick,
Navy, Purple, Wine
Sizes: S-5XL

**6500 Unisex Jersey Knit
V-Neck Pullover Sweater**

Colors: Black, Cardinal,
Green, Grey Heather, Lipstick,
Navy, Purple, Wine
Sizes: S-5XL

**6530 Unisex Jersey
Knit Crewneck
Pullover Sweater**

Colors: Black, Lipstick,
Navy, Wine
Sizes: S-5XL



6530

6500



6300

6745

A+ Performance
Jersey Knit Sweaters:

- **Guaranteed quality**
- A+ Fabrics: 100% acrylic
- Stain, fade, shrink, and pill resistant
- Elasticized rib-knit cuffs for shape retention
- Dyed-to-match buttons
- Easy care: machine wash and dry

6300 Unisex Jersey Knit 5-Button V-Neck Pocket Cardigan

- 2 large pockets
 - Hemmed bottom band
- Colors: Black, Brown, Cardinal, Charcoal Heather, Green, Grey Heather, Kelly Green, Khaki, Lipstick, Mayfair, Nally Powder Blue, Navy, **New Color: Old Gold**, Passion Pink, Purple, Reflex Blue, **New Color: Superior Gold**, White, Wine
- Sizes: S-5XL

6745 Unisex Jersey Knit 5-Button V-Neck Cardigan

- Colors: Black, Lipstick, Navy, Wine
- Sizes: S-5XL

6000 Women's Jersey Knit 7-Button Crewneck Cardigan

- Colors: Black, Cardinal, Grey Heather, Lipstick, Navy, White, Wine
- Sizes: S-5XL

Black	Brown	Cardinal
Charcoal Heather	Green	Grey Heather
Kelly Green	Khaki	Lipstick
Mayfair	Mulberry	Navy
Old Gold	Passion Pink	Nally Powder Blue
Purple	Reflex Blue	Spruce Green
Superior Gold	White	Wine

6000



6340

Varsity sweaters
are available in dozens of
**CUSTOM COLOR
COMBINATIONS**
Contact your Sales
Rep for details

A+ Performance Varsity Sweaters:

- **Guaranteed quality**
- A+ Fabrics: 100% acrylic
- Stain, fade, shrink, and pill resistant
- Easy care: machine wash and dry

6340 Unisex 5-Button V-Neck Varsity Pocket Cardigan

- 2 welt pockets
- 3 stripes on upper left sleeve
- Contrasting trim

Body Color / Trim Color:

Black / Old Gold

New Color: Black / White

New Color: Brown / Old Gold

Cardinal / Cream

New Color: Charcoal Heather / Black

Lipstick / White

Navy / White

New Color: Orange / White

Passion Pink / Kelley Green

Purple / Old Gold

New Color: Reflex Blue / Superior Gold

Reflex Blue / White

Sizes: S-3XL

	Body Color	Trim Color
	Black	Old Gold
New Color	Black	White
New Color	Brown	Old Gold
	Cardinal	Cream
New Color	Charcoal Heather	Black
	Lipstick	White
	Navy	White
New Color	Orange	White
	Passion Pink	Kelly Green
	Purple	Old Gold
New Color	Reflex Blue	Superior Gold
	Reflex Blue	White

3461 Unisex 5-Button V-Neck Varsity Cardigan

- 3 stripes on upper left sleeve
- Body Color / Trim Color:
Navy / White
Sizes: S-3XL



More color combinations available.



5953

5955



Wear-Tested™

If any garment
does not stand
up to one year
of normal wear,
we'll replace it.

It's that simple.

5977

A+ Performance Commando Sweaters:

- **Guaranteed quality**
- A+ Fabrics: 100% acrylic and wool-blend options
- Stain, fade, shrink, and pill resistant
- Top choice for law enforcement and emergency professionals
- Easy care: machine wash and dry
- Nameplate tab and badge tab included

5953 Unisex 2x2 Heavy Rib V-Neck Commando Sweater

- 100% acrylic
- Elasticized cuffs and waist for shape retention
- Twill epaulets, shoulder patches, and elbow patches

Colors: Black, Brown, Police Navy

Sizes: S-5XL

5955 Unisex Jersey V-Neck Commando Sweater

- 100% acrylic
- Elasticized cuffs and waist for shape retention
- Twill epaulets, shoulder patches, and elbow patches

Colors: Black, Police Navy

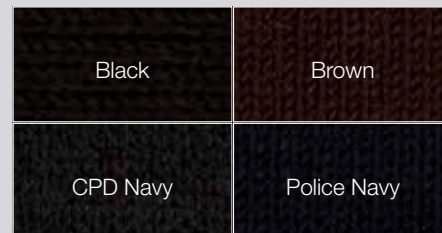
Sizes: S-5XL

5977 Unisex Fleece-Lined Zip-Front V-Neck Commando Cardigan

- Body: 57% polyester, 28% worsted wool, 15% acrylic
- Bonded fleece lining: 100% polyester
- Shoulder and elbow patches: 100% CORDURA® nylon
- Easy-pull zipper
- 2 microphone tabs, and 2 epaulets included
- 2 pockets

Colors: Black, Police Navy (*closeout color*)

Sizes: S-5XL



Commando Sweater Accessories:

5420 Badge Tab, 5430 Nameplate Tab

- 65% polyester, 35% cotton
- Can be applied to any Commando or Transit sweater to hold a nameplate or badge

Colors: Black, Brown, CPD Navy

Size: 1 size

Style and Comfort

Resilient sweaters offer easy warmth with professional style

5510



5600



A+ Heavyweight Transit Sweaters:

- **Guaranteed quality**
- A+ Fabrics: 100% acrylic
- Jersey knit
- Stain, fade, shrink, and pill resistant
- Elasticized cuffs and waist for shape retention
- Easy care: machine wash and dry

5510 Unisex Heavyweight Zip-Front Crewneck Transit Cardigan

- Full-length easy-pull zipper
- 2 pockets
- Rack-stitch border

Colors: Black, Brown, Navy

Sizes: S-5XL

5600 Unisex Heavyweight 5-Button V-Neck Transit Cardigan

- 2 welt pockets
- Rib-knit cuffs

Colors: Black, Navy

Sizes: S-5XL

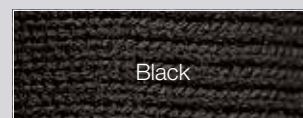
5550 Unisex Heavyweight Zip-Front Crewneck Transit Sweater Vest

- 2 welt pockets
- Rack-stitch border

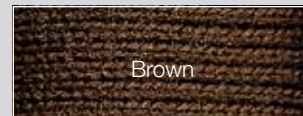
Color: Black, Brown, Navy

Sizes: S-5XL

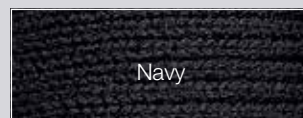
5550



Black



Brown



Navy

9212

8211

Form and Function

Wrinkle-free wovens: ease and utility without sacrificing style

A+ Performance
Hospitality Shirts:

- **Guaranteed quality**
- A+ Fabrics: 100% fourth-generation polyester microfiber
- 4.0 oz. moisture-wicking polyester
- Stain, fade, and shrink resistant
- Wrinkle free
- Single-needle tailoring
- Covered button placket
- Dyed-to-match buttons
- Easy care: machine wash and dry

9212 Women's Hospitality Camp Shirt, Spread Collar

- Bust darts
- Single-welt chest pocket

Colors: Black, Buff, Celery, Charcoal, Cobalt Blue, Red

Women's Sizes: XS-5XL

Men's Sizes: Regular XXS-5XL; Tall L-5XL

8211 Men's Hospitality Camp Shirt, Spread Collar

- Single-welt chest pocket

Colors: Black, Charcoal, Cobalt Blue, Red

Women's Sizes: XS-5XL

Men's Sizes: Regular XXS-5XL; Tall L-5XL

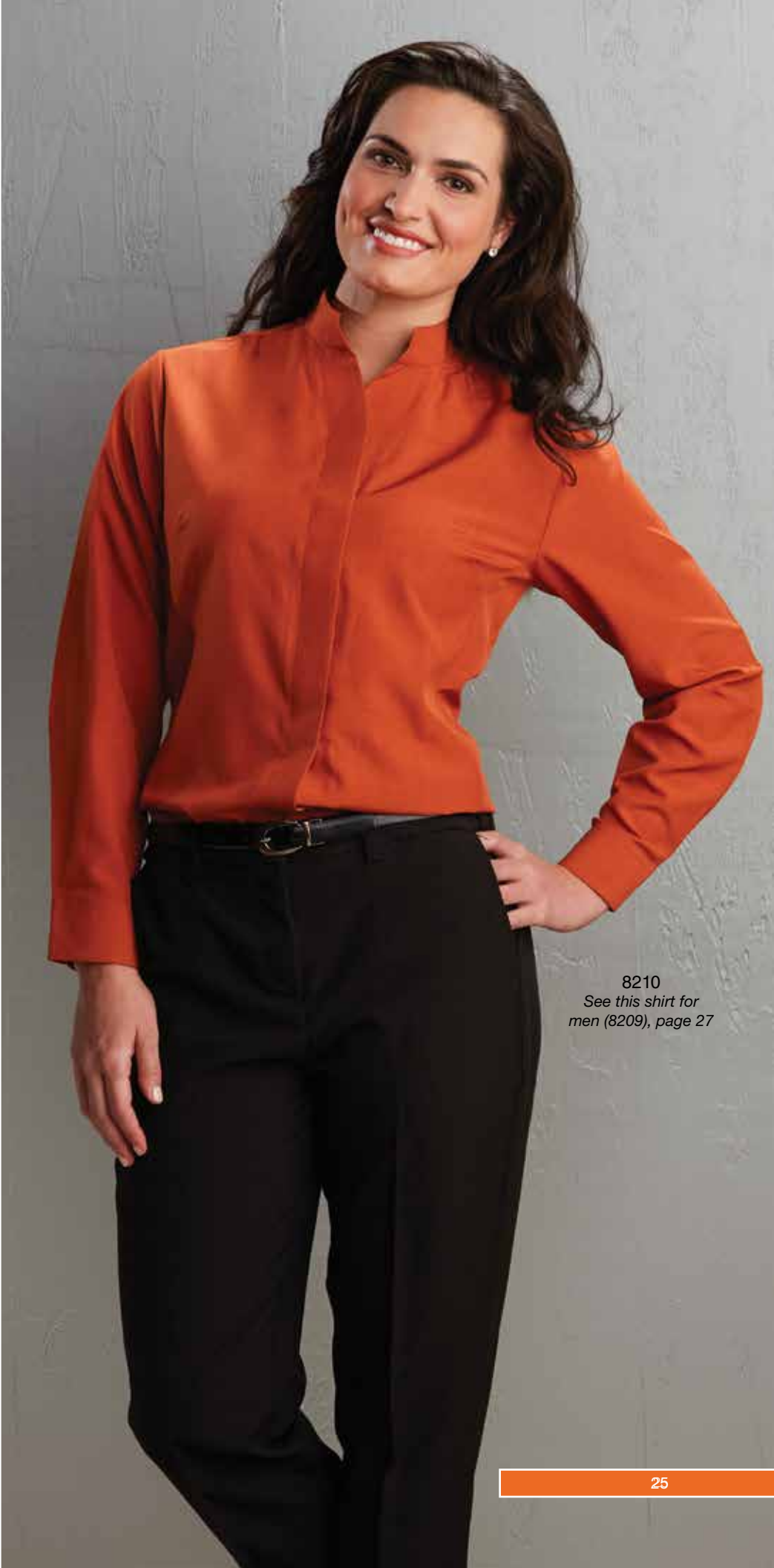
8210 Women's Hospitality Shirt, Stand-Up Collar

- Open neck for comfort
- Relaxed fit

Colors: Black, Charcoal, Cobalt Blue, Red, Rust, Wheat, Wine

Sizes: XXS-4XL

Black	Buff
Celery	Charcoal
Chocolate	Cobalt Blue
Red	Rust
Wheat	Wine



8210
See this shirt for
men (8209), page 27

8207



8208



Cobalt Blue

Wine

Charcoal

Wheat

White

Silver

Rust

Chocolate

Red

Black

A+ Performance Hospitality Shirts:

- **Guaranteed quality**
- A+ Fabrics: 100% fourth-generation polyester microfiber
- 4.0 oz. moisture-wicking polyester
- Stain, fade, and shrink resistant
- Wrinkle free
- Single-needle tailoring
- Covered button placket
- Dyed-to-match buttons
- Adjustable two-button cuffs
- Easy care: machine wash and dry

8207 Men's Hospitality Shirt, Pointed Collar

- Permanent collar stays
- Colors: Black, Charcoal, Cobalt Blue, Red, Rust, Silver, Wheat, White, Wine
- Women's Sizes: XXS-4XL
- Men's Sizes: Regular XXS-5XL; Tall L-5XL

8208 Women's Hospitality Blouse, Pointed Collar

- Permanent collar stays
- Colors: Black, Charcoal, Cobalt Blue, Red, Rust, Silver, Wheat, White, Wine
- Women's Sizes: XXS-4XL
- Men's Sizes: Regular XXS-5XL; Tall L-5XL

8209 Men's Hospitality Shirt, Stand-Up Collar

- Open neck for comfort
 - Relaxed fit
 - Badge tab on left chest
- Colors: Black, Charcoal, Cobalt Blue, Red, Rust, Wheat, Wine
- Sizes: Regular XXS-5XL; Tall L-5XL



8209

See this shirt for women
(8210), page 25

9431

Tan (non-stock color)

8096



A+ Performance Poplin Shirts:

- **Guaranteed quality**
- A+ Fabrics: 65% polyester, 35% cotton
- 4.25 oz. poplin
- Stain, fade, and shrink resistant
- Wrinkle free
- Generous cut
- Full single-needle tailoring
- Double-yoke back with center box-pleat for comfort
- Left chest pocket
- Wood-tone buttons
- Easy care: machine wash and dry
- Also suitable for industrial laundry (IL)

9431 Women's Short-Sleeve Poplin Blouse

- Adjustable double-button barrel cuffs
- Colors: Black, Navy, Red, White
Sizes: S-3XL

8091 Men's Short-Sleeve Poplin Shirt

8096 Men's Long-Sleeve Poplin Shirt

- Adjustable double-button barrel cuffs
- Colors: Black, Dark Green, Navy, Red, Royal, White
Sizes: S-5XL

Black
Dark Green
Navy
Red
Royal
White

8091



8006

8002

A+ Performance Aviator Shirts:

- **Guaranteed quality**
- Stain, fade, and shrink resistant
- Wrinkle free
- Pointed collar
- 2 epaulets
- Pencil/pen openings on pocket flaps
- Double-yoke back with center box-pleat for comfort
- Adjustable double-button barrel cuffs with pearl-style buttons
- Perfect for the airline, security, transit, and cruise ship industries
- Easy care: machine wash and dry
- Also suitable for industrial laundry (IL)

8002 Men's Poplin Short-Sleeve Aviator Shirt

8006 Men's Poplin Long-Sleeve Aviator Shirt

- A+ Fabrics: 65% polyester, 35% cotton
- 4.25 oz. poplin
- Pleated chest pockets with button flaps

Colors: Blue, White

Sizes: XS-5XL



8061

9466

A+ Performance Oxford Shirts:

- **Guaranteed quality**
- A+ Fabrics:
 - 60% cotton,
 - 40% polyester
- 4.6 oz. oxford cloth
- Wrinkle free
- Stain, fade, and shrink resistant
- Full single-needle tailoring
- Left chest pocket
- Generous shoulders and armholes for comfort and ease of movement
- Easy care: machine wash and dry
- Also suitable for industrial laundry (IL)

9461 Women's Short-Sleeve Oxford Blouse

Colors: Blue, Pink, White, Yellow

Sizes: XS–5XL

9466 Women's Long-Sleeve Oxford Blouse

- Adjustable double-button barrel cuffs

Colors: Blue, White, Yellow

Sizes: XS–5XL

8061 Men's Short-Sleeve Oxford Shirt

Colors: Blue, Blue Pinstripe, White, Yellow

Tall L–5XL (Blue and White only)

8066 Men's Long-Sleeve Oxford Shirt

- Adjustable double-button barrel cuffs

Colors: Blue, White, Yellow

Sizes: Regular S–5XL

Tall L–5XL (Blue and White only)

Blue

Blue Pinstripe

Pink

White

Yellow

A+ Performance
Moisture-Management
Polo Shirts:

- **Guaranteed quality**
- Snag resistant
- Stain, fade, and shrink resistant
- Wrinkle free
- Easy care: machine wash and dry

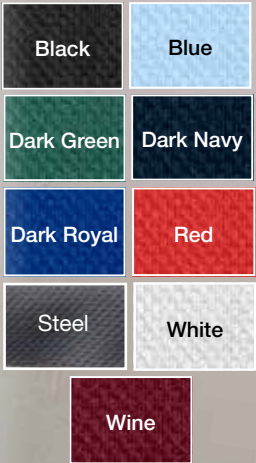
8952 Men's
Moisture-Management
Jersey Polo Shirt

- A+ Fabrics: 100% polyester
- Snag resistant
- 5.5 oz. fabric
- Short sleeves, hemmed
- Rib-knit collar with welt
- 3-button placket
- Side vents

Colors: Black, Blue, Dark Green, Dark Navy, Dark Royal, Red, Steel, White, Wine

Sizes: S-5XL

8952



A+ Performance Piqué Polo Shirts:

- **Guaranteed quality**
- A+ Fabrics: 60% combed ring-spun cotton, 40% polyester
- 7.0 oz. fabric for white, 6.4 oz. fabric for colors
- Stain, fade, and shrink resistant
- Wrinkle free
- Rib-knit collar
- Hemmed bottom
- Easy care: machine wash and dry



9715 Women's Piqué Polo Shirt

- Short sleeves, rib-knit cuffs
- Narrow 4-button placket
- Side vents

Colors: Black, Blue, Dark Green, Navy, Red, White, Wine, Yellow

Sizes: S-3XL

8760 Men's/Unisex Piqué Polo Shirt, Short Sleeves, Hemmed

Colors: Ash Grey, Black, Blue, Dark Green, Dark Navy, Khaki, Red, Tulane Jade, Tulane Kelly Green, White, Wine

Sizes: S-5XL

8780 Men's/Unisex Piqué Polo Shirt with Pocket, Short Sleeves, Hemmed

Colors: Ash Grey, Black, Red, White

Sizes: S-5XL

8761 Men's/Unisex Piqué Polo Shirt, Short Sleeves, Rib-Knit Cuffs

Colors: Ash Grey, Black, Dark Green, Dark Navy, Dark Royal, Khaki, Red, Tulane Forest Lane Green, Tulane Gold, White

Sizes: S-5XL

8766 Men's/Unisex Piqué Polo Shirt, Long Sleeves, Rib-Knit Cuffs

Colors: Ash Grey, Black, Dark Green, Dark Navy, Dark Royal, Khaki, Red, Tulane Gold, White

Sizes: S-5XL





A+ Performance Jersey Knit Shirts:

- **Guaranteed quality**
- A+ Fabrics: 60% combed ring-spun cotton, 40% polyester
- 6.9 oz. fabric for white, 6.4 oz. fabric for colors
- Stain, fade, and shrink resistant
- Wrinkle free
- Easy care: machine wash and dry

8103 Unisex Jersey Knit Mock Turtleneck

- Spandex® rib-knit collar and cuffs
- Taped neck and shoulders

Colors: Black, Police Navy, White

Sizes: S-5XL

8100 Unisex Jersey Knit Turtleneck

- Spandex® rib-knit collar and cuffs
- Taped neck and shoulders
- Hemmed bottom

Colors: Black, Navy, Police Navy, White, Wine

Sizes: S-5XL

8117 Unisex Jersey Mock Turtleneck Dickie

Colors: Black, Police Navy

Sizes: M, XL, 3XL



A+ Jersey Knit Polo Overshirts:

- **Guaranteed quality**
- A+ Fabrics: 60% combed ring-spun cotton, 40% polyester
- 12.5 oz.
- Stain, fade, shrink resistant and wrinkle free
- 3-button fused placket
- Lycra® banded bottom
- Taped neck and shoulders
- Reinforced stitching
- Easy care: machine wash and dry



8311

8311 Unisex Jersey Knit Polo Overshirt with Banded Bottom, Short Sleeves

- Hemmed cuffs
- Colors: Dark Green, Dark Navy, Red, White, Wine
Sizes: S-5XL

A+ Jersey Knit Polo Shirts:

- **Guaranteed quality**
- A+ Fabrics: 60% combed ring-spun cotton, 40% polyester
- 6.9 oz. fabric for white, 6.4 oz. fabric for colors
- Stain, fade, shrink resistant and wrinkle free
- 3-button fused placket
- Banded cuffs, Taped neck and shoulders
- Double-needle stitching in shoulder and armholes for durability
- Easy care: machine wash and dry



8320

8320 Unisex Jersey Knit Polo Shirt, Short Sleeves

Colors: Black, Dark Green, Dark Navy, Red, White, Wine
Sizes: S-5XL

A+ Performance Jackets:

- **Guaranteed quality**
- Stain, fade, shrink, and pill resistant
- Easy-pull zipper
- Easy care: machine wash and dry

6225 Unisex Medium-Weight Nylon Jacket

- A+ Fabrics: 100% water-repellent polyester shell
- Fleece body lining: 76% polyester, 12% rayon, 12% cotton
- Sleeve lining: 100% nylon
- Sleeve padding: 100% polyester
- Shock-cord drawstring at hem
- Elasticized cuff bands
- Zip-off fleece-lined hood

Colors: Black, Green, Navy, Red, Wine

Sizes: S-5XL

Black

Green

Navy

Red

Wine

6225

A+ Performance Wear:

- **Guaranteed quality**
- A+ Fabrics: 100% polyester performance fleece
- Moisture wicking
- Anti-pill technology
- Performance color retention
- Lycra® rib-knit trim for shape retention, flexibility, and long wear
- Machine wash and dry

6202



6202 Unisex Zip-Front Fabri-Tech Fleece Jacket

- A+ Fabrics: 100% spun polyester
- On-seam pockets
- Hemmed bottom

Colors: Black, Charcoal, Green, Lipstick, Navy, Wine

Sizes: S-3XL

Black

Charcoal

Green

Lipstick

Navy

Wine

A+ Performance Fleece Sweatshirts:

- **Guaranteed quality**

- A+ Fabrics: 60% combed ring-spun cotton, 40% polyester
- 8.5 oz. knit
- Stain, fade, and shrink resistant
- Rib-knit cuffs
- Easy care: machine wash and dry



6247

6247 Unisex Full-Zip Hooded Fleece Sweatshirt

- Kangaroo patch pockets
- Rib-knit bottom band

Colors: Ash Grey, Black, Dark Royal, Hunter Green, Navy, Red, Wine

Sizes: S-3XL

Ash Grey	Black
Dark Royal	Hunter Green
Navy	Oxford Grey
Red	Wine



6254

6254 Unisex Crewneck Fleece Sweatshirt

- Rib-knit neck and bottom band
- Colors: Ash Grey, Black, Dark Royal, Hunter Green, Navy, Oxford Grey, Red, Wine

Sizes: S-3XL

6136

Black
Charcoal
Bright Navy
Burgundy
Dark Green



6135 Male Crew Neck 1/4 Zip Pullover

- Moisture wicking
- Waffle weave,
- Lycra® rib-knit cuffs
- Hemmed bottom

Colors: Black, Bright Navy, Burgundy, Charcoal, Dark Green

Sizes: S-3XL

6135



6136 Ladies Crew Neck 1/4 Zip Pullover

- Moisture wicking
- Waffle weave,
- Lycra® rib-knit cuffs
- Hemmed bottom

Colors: Black, Bright Navy, Burgundy, Charcoal, Dark Green

Sizes: S-3XL



Performance Counts

High-performance fabrics and moisture-wicking abilities for everyday comfort

7917M

7916M

Everyday Essentials

Wear-Tested™ classics offer reliable comfort in a range of workplace styles



Expandable waistband

A+ Performance Hospitality Pants:

- **Guaranteed quality**
- A+ Fabrics: 100% polyester
- 5.15 oz. polyester
- Stain, fade, and shrink resistant
- Wrinkle free
- Plain front
- High-quality easy-pull YKK zipper
- Sturdy hook-and-eye closure
- Bar-tacked stress points
- Easy care: machine wash and dry

7917M Women's Hospitality Pants

- Quarter-top front pockets
 - Expandable waistband with gripper trim to keep shirt tucked in
- Color: Black Sizes: 2-30 Unhemmed: 36"

7916M Men's Hospitality Pants

- Quarter-top front pockets
 - Back welt pocket
 - Expandable waistband with gripper trim to keep shirt tucked in
 - French fly with inside button closure
- Color: Black Waist sizes: 28"-60" Unhemmed: 37"

7918ME Men's Hospitality Pants, No Pockets

- Elastic side waistband with gripper trim to keep shirt tucked in
 - French fly with inside button closure
- Color: Black Waist sizes: 28"-60" Unhemmed: 37"

7919ME Women's Hospitality Pants, No Pockets

- Elastic side waistband with gripper trim to keep shirt tucked in
- Color: Black Sizes: 2-30 Unhemmed: 36"

7918ME

7919ME



A+ Modern Fit Flat Front Pants:

- **Guaranteed quality**
- Quarter top front pockets
- Reinforced stitching
- Stain, fade, and wrinkle resistant
- Machine wash and dry



7894M



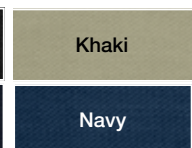
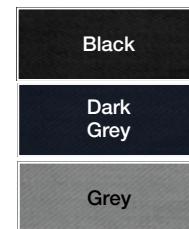
7899M

7894M Men's MVP Flex Twill Pants

- A+ Fabrics: 65% polyester / 35% cotton
 - Standard waistband
- Colors: Black, Dark Grey, Grey, Khaki, Navy
 Sizes: Men's 28"-60" waist
 Hemmed inseam: 30", 32", 34", Unhemmed: 37"

7899M Men's PERFORMANCE Pants

- A+ Fabrics: 100% polyester
 - Standard waistband
- Colors: Black, Khaki, Navy
 Sizes: Men's 28"-60" waist
 Hemmed inseam: 30", 32", 34", Unhemmed: 37"





A+ Cargo Pants and Shorts:

- **Guaranteed quality**
- Stain, fade, and shrink resistant
- Wrinkle free
- Plain front
- Jean waistband with button closure
- Quarter-top front pockets
- Functional cargo pockets with security flaps
- Bar-tacked stress points
- Easy care: machine wash and dry
- Also suitable for industrial laundry (IL)

7188M Men's Cargo Pants

- A+ Fabrics: 65% polyester, 35% cotton
 - 8.25 oz. Gusto Plus twill
 - Additional room in seat and thighs for comfort
- Colors: Black, Graphite, Navy, Sand Khaki
Sizes: 28"-60" waist
Hemmed inseams: 30", 32", 34"
Unhemmed: 37"

7180M Women's Cargo Pants

- A+ Fabrics: 65% polyester, 35% cotton
 - 7.0 oz. Brushed Centurion twill
- Colors: Black, Graphite, Navy, Sand Khaki
Sizes: 2-30

7010M



7012M



7010M Men's MVP Flex Twill Cargo Pants

- A+ Fabrics: 65% polyester / 35% cotton
- Standard waistband

Colors: Black, Graphite, Khaki, Navy

Sizes: Men's 28"-60" waist

Hemmed inseam: 30", 32", 34"

Unhemmed: 37"

7354M Men's Cargo Shorts

- A+ Fabrics: 65% polyester, 35% cotton
- 8.25 oz. Gusto Plus twill
- Additional room in seat and thighs for comfort

Colors: Black, Graphite, Navy, Sand Khaki

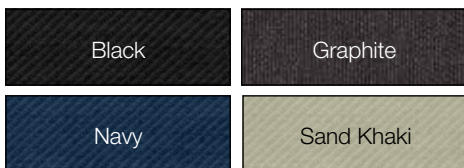
Sizes: 28"-60" waist

7012M Men's MVP Flex Twill Cargo Shorts

- A+ Fabrics: 65% polyester / 35% cotton
- Standard waistband

Colors: Black, Graphite, Khaki, Navy

Sizes: Men's 28"-60" waist



7354M



If any garment does not stand up to one year of normal wear, we'll replace it.
It's that simple.



A+ Men's Pants and Shorts:

- **Guaranteed quality**

- A+ Fabrics:
 - 65% polyester, 35% cotton
- 8.25 oz. twill
- Stain, fade, and shrink resistant
- Wrinkle free
- Easy-pull YKK zipper
- Hook-and-eye closure
- Quarter-top front pockets
- Bar-tacked stress points
- 2 back pockets
(button closure on left back pocket)
- Easy care:
 - machine wash and dry
- Also suitable for industrial laundry (IL)

7021M Men's Plain Front Relaxed Fit Twill Pants

- Gusto Plus twill
- Additional room in seat and thighs for comfort

Colors: Black, Navy, Sand Khaki

Waist sizes: 28"-60"

Hemmed inseams: 30", 32", 34"

Unhemmed: 37"

Black

Navy

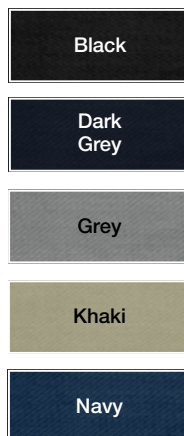
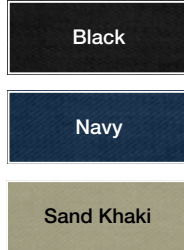
Sand Khaki

A+ Men's Pants and Shorts:

- **Guaranteed quality**
- Stain, fade, and shrink resistant
- Wrinkle free
- Easy-pull YKK zipper
- Hook-and-eye closure
- Easy care: machine wash and dry
- Also suitable for industrial laundry (IL)

7031M Men's Plain Front Relaxed Fit Twill Shorts

- A+ Fabrics: 65% polyester, 35% cotton
 - 8.25 oz. Gusto Plus twill
 - Jean waistband and hem
 - Quarter-top front pockets
- Colors: Black, Navy, Sand Khaki
Waist sizes: 28"-60"



7898M Men's MVP Flex Twill Shorts

- A+ Fabrics: 65% polyester / 35% cotton
 - Standard waistband
- Colors: Black, Dark Grey, Grey, Khaki, Navy
Sizes: Men's 28"-60" waist





7808M



7806M

A+ Women's Pants and Shorts:

- **Guaranteed quality**
- Stain, fade, and shrink resistant
- Wrinkle free
- Easy-pull YKK zipper
- Hook-and-eye closure
- Easy care: machine wash and dry
- Also suitable for industrial laundry (IL)

7808M Women's Plain Front Classic Fit Twill Shorts

- A+ Fabrics: 65% polyester, 35% cotton
 - 7.0 oz. Brushed Centurion twill
 - Comfortable fit, popular style
- Colors: Black, Navy, Sand Khaki
Sizes: 2–30

7806M Women's Plain Front Classic Fit Twill Pants

- A+ Fabrics: 65% polyester, 35% cotton
 - 7.0 oz. Brushed Centurion twill
- Colors: Black, Navy, Sand Khaki
Sizes: 2–30
Inseam: hemmed or unhemmed (36")

Black

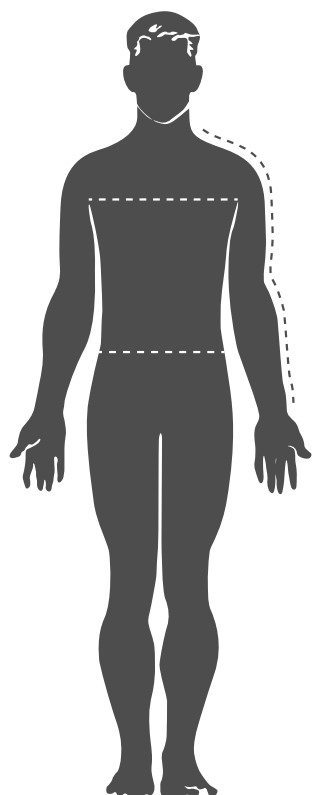
Navy

Sand Khaki



How to Measure

A+ garments are made for comfort and ease of movement. If you're not sure what size to order, take some measurements and use our size charts on the next pages to find the right fit. For both women and men, we recommend measuring over your undergarments, not over other clothing. Wrap a tape measure comfortably around your body; don't make it too tight. You might have to have someone help you.



Neck

Measure around the lower part of the neck.

Chest/Bust

Measure around your shoulder blades and the fullest part of your chest, keeping your arms comfortably at your sides.

Waist

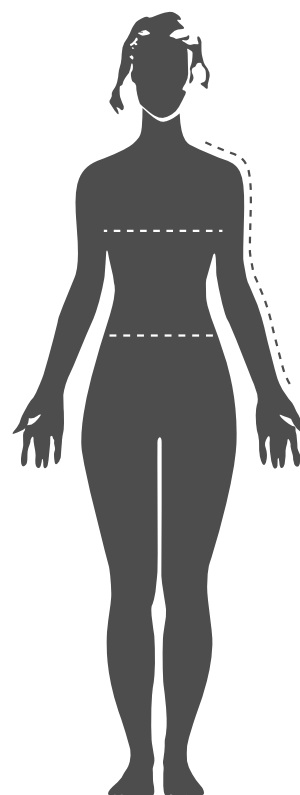
Measure around your natural waistline (for men, just below your navel).

Sleeve Length

Measure from the center of the back of your neck, over the top of your shoulder, and down to your wrist. Keep your arms comfortably at your sides.

Inseam

Take this measurement from a nice-fitting pair of pants of a similar style. Measure the garment inseam from the crotch seam to the hem.



Garment Size Charts

(not body fit)

The fit and comfort of any garment will depend on your personal preferences, so these size charts are simply a guide. If you have questions about sizing, please call your dedicated customer service representative at 877-632-7587. We'll be happy to answer your questions!

SWEATERS

Men's/Unisex	S	M	L	XL	2XL	3XL	4XL	5XL
Chest	40	43	46	50	54	58	62	66
Sleeve Length	32½	33½	34½	35½	36½	37½	37½	37½
Women's	S	M	L	XL	2XL	3XL	4XL	5XL
Chest	38	40	43	46	49	52	55	58
Sleeve Length	30	31	32	32	33	33	33	33

KNIT SHIRTS

Men's/Unisex	S	M	L	XL	2XL	3XL	4XL	5XL
Neck	15	15	16	16	18	18	18	18
Chest	38	42	46	50	54	58	62	66
Long Sleeve	34½	36	37½	39	40½	41	41⅝	42¼
Short Sleeve	19¾	20½	21¼	22	22¾	23	23¼	23½
Women's	S	M	L	XL	2XL	3XL		
Chest	38	41	44	47	50	53		
Short Sleeve	15	16	17	18	19	20		
Women's	S	M	L	XL	2XL	3XL		
Chest	39	42	44	46	48	50		
Short Sleeve	13⅝	14⅛	15⅜	16⅞	17⅜	17⅞		

Note: All measurements are in inches

WOVEN SHIRTS									
Men's Poplin		S	M	L	XL	2XL	3XL	4XL	5XL
Neck		16	17	18	19	20	21	22	23
Chest		47	49	51	55	59	63	67	71
Long Sleeve		32	33¼	34½	35¾	37⅛	38¼	38½	38¾
Short Sleeve		18¼	19½	20¾	21	21¼	21½	21⅝	21¾
Men's Oxford		S	M	L	XL	2XL	3XL	4XL	5XL
Neck		16	17	18	19	20	21	22	23
Chest		46	48	50	54	58	62	66	70
Long Sleeve		32	33¼	34½	35¾	37⅛	38¼	38½	38¾
Short Sleeve		18¼	19½	20¾	21	21¼	21½	21⅝	21¾
Men's Broadcloth		S	M	L	XL	2XL	3XL	4XL	5XL
Neck		16	17	18	19	20	21	22	23
Chest		46	48	50	54	58	62	66	70
Long Sleeve		32	33¼	34½	35¾	37⅛	38¼	38½	38¾
Short Sleeve		18¼	19½	20¾	21	21¼	21½	21⅝	21¾
Men's Aviator	XS	S	M	L	XL	2XL	3XL	4XL	5XL
Neck	15	16	17	18	19	20	21	22	23
Chest	45	47	49	51	55	59	63	67	71
Long Sleeve	31⅝	32⅞	33⅞	35	36	36⅜	36⅝	36⅞	37⅞
Short Sleeve	21	21½	22	22½	23¼	24	24¾	25½	26¼
Women's Poplin	XS	S	M	L	XL	2XL	3XL		
Neck		16¼	16¾	17¼	17¾	18¼	18½		
Chest		43½	46½	49½	52½	58½	61½		
Long Sleeve		31	32	33	33½	35	35½		
Short Sleeve		17⅜	18⅞	19⅞	19¾	21⅜	22		
Women's Oxford	XS	S	M	L	XL	2XL	3XL	4XL	5XL
Neck	15¾	16¼	16¾	17¼	17¾	18¼	18½	18¾	19
Chest	40½	43½	46½	49½	52½	58½	61½	64½	67½
Long Sleeve	29¾	31	32	33	33½	35	35½	36	36½
Short Sleeve	16⅜	17⅜	18⅞	19⅞	19¾	21⅜	22	22⅝	23¼
Women's Broadcloth		S	M	L	XL	2XL	3XL		
Neck		15	15½	16	16½	17	17½		
Chest		40½	43½	47	49	52	54		
Long Sleeve		32⅞	32¾	34	35	36	36⅝		
Short Sleeve		16⅜	17	18	19	20	20⅝		

Note: All measurements are in inches

PANTS AND SHORTS																		
Men's	28	30	32	33	34	36	38	40	42	44	46	48	50	52	54	56	58	60
Waist	28	30	32	33	34	36	38	40	42	44	46	48	50	52	54	56	58	60
Pants Inseam	M = 30" L = 32" XL = 34" W = 37" Open Bottoms																	
Shorts Inseam	8¾	9	9¼	9⅜	9½	9⅝	9¾	9⅞	10	10⅛	10¼	10⅜	10½	10⅝	10¾	10⅞	11	11⅛

Women's	2	4	6	8	10	12	14	16	18	20	22	24	26	28	30
Waist	25½	26½	27½	28½	29½	31	32½	34	36	38	40	42	44	46	48
Pants Inseam	30½	30½	30½	30½	31½	31½	31½	31½	32½	32½	32½	32½	32½	32½	32½
Shorts Inseam	8½	8½	8½	8½	8½	8½	8½	8½	8½	9	9	9	9	9	9
Junior	0	1	3	5	7	9	11	13	15	17	19	21	23	25	27
Waist	27	28	29	30	31½	33	34½	36	37½	39	40½	42	43½	45	46½
Pants Inseam	31½	31½	31½	31½	31½	32½	32½	32½	32½	33½	33½	33½	33½	33½	33½
Junior Mid-Rise	0	1	3	5	7	9	11	13	15	17	19	21	23	25	27
Waist	27	28	29	30	31	32	33½	35	36½	38	39½	41	42½	44	45½
Pants Inseam	31½	31½	31½	31½	31½	32½	32½	32½	32½	33½	33½	33½	33½	33½	33½
Shorts Inseam	8½	8½	8½	8½	8½	8½	8½	8½	8½	8½	9	9	9	9	9

OUTERWEAR AND SWEATSHIRTS								
Unisex Jackets	S	M	L	XL	2XL	3XL	4XL	5XL
Chest	44	49	53	55	57	59	61	63
Sleeve Length	33	34¾	36¼	37	37¾	38½	38½	39¼
Unisex Sweatshirts	S	M	L	XL	2XL	3XL		
Chest	40	44	48	52	56	60		
Sleeve Length	33½	34½	35½	36½	36½	36½		

Note: All measurements are in inches

