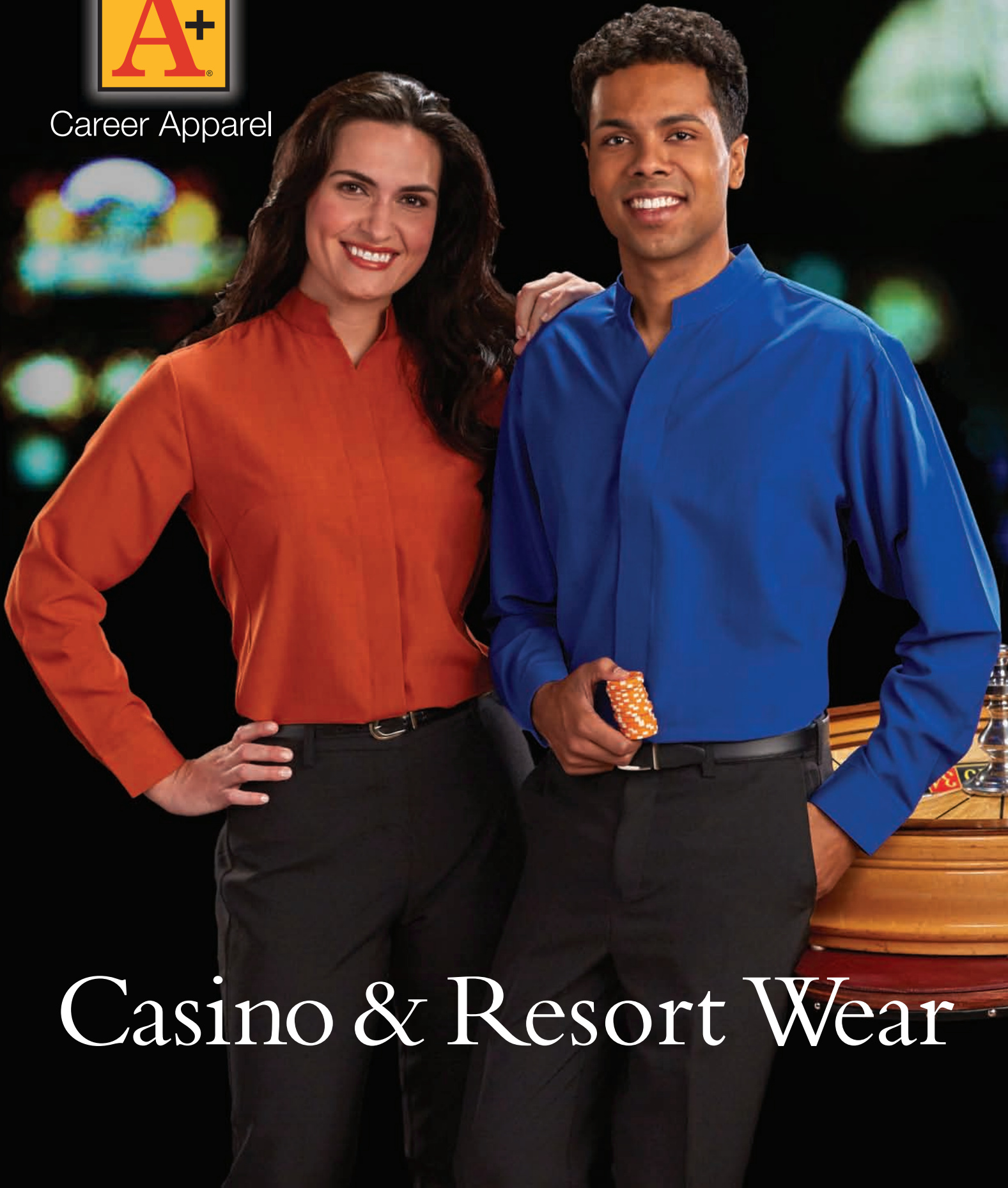
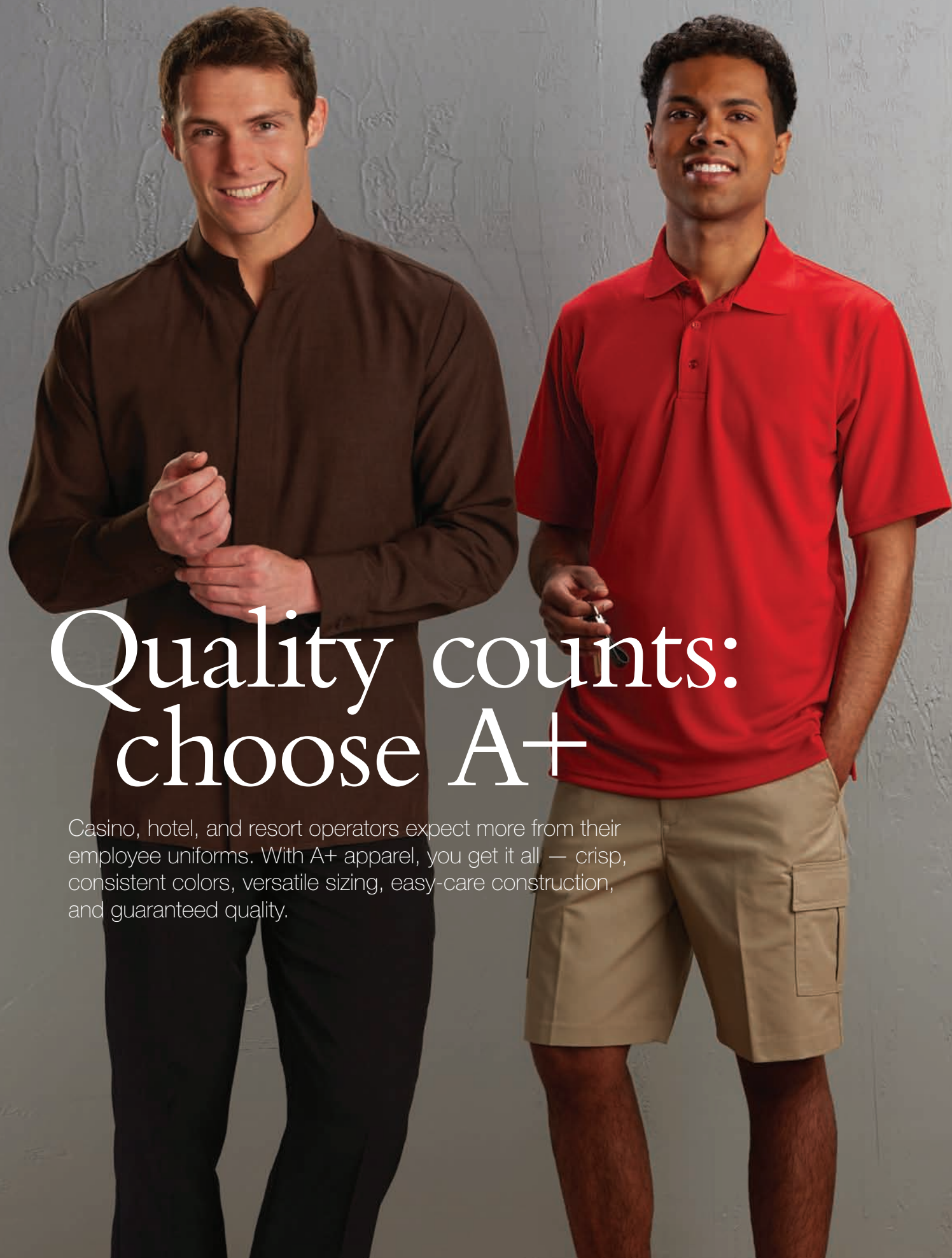




Career Apparel



Casino & Resort Wear



Quality counts: choose A+

Casino, hotel, and resort operators expect more from their employee uniforms. With A+ apparel, you get it all — crisp, consistent colors, versatile sizing, easy-care construction, and guaranteed quality.



Casino & Resort Wear

HOSPITALITY & CASINO

Shirts and blouses	4
Pants	4
Sweaters and vests	6

FOOD & BEVERAGE

Poplin, oxford, and broadcloth shirts	8
Polo shirts	10
Pants	10

VALET

Polo shirts	12
Pants and shorts	12
Outerwear	16

SECURITY

Aviator shirts	18
Commando sweaters	19
Pants	18

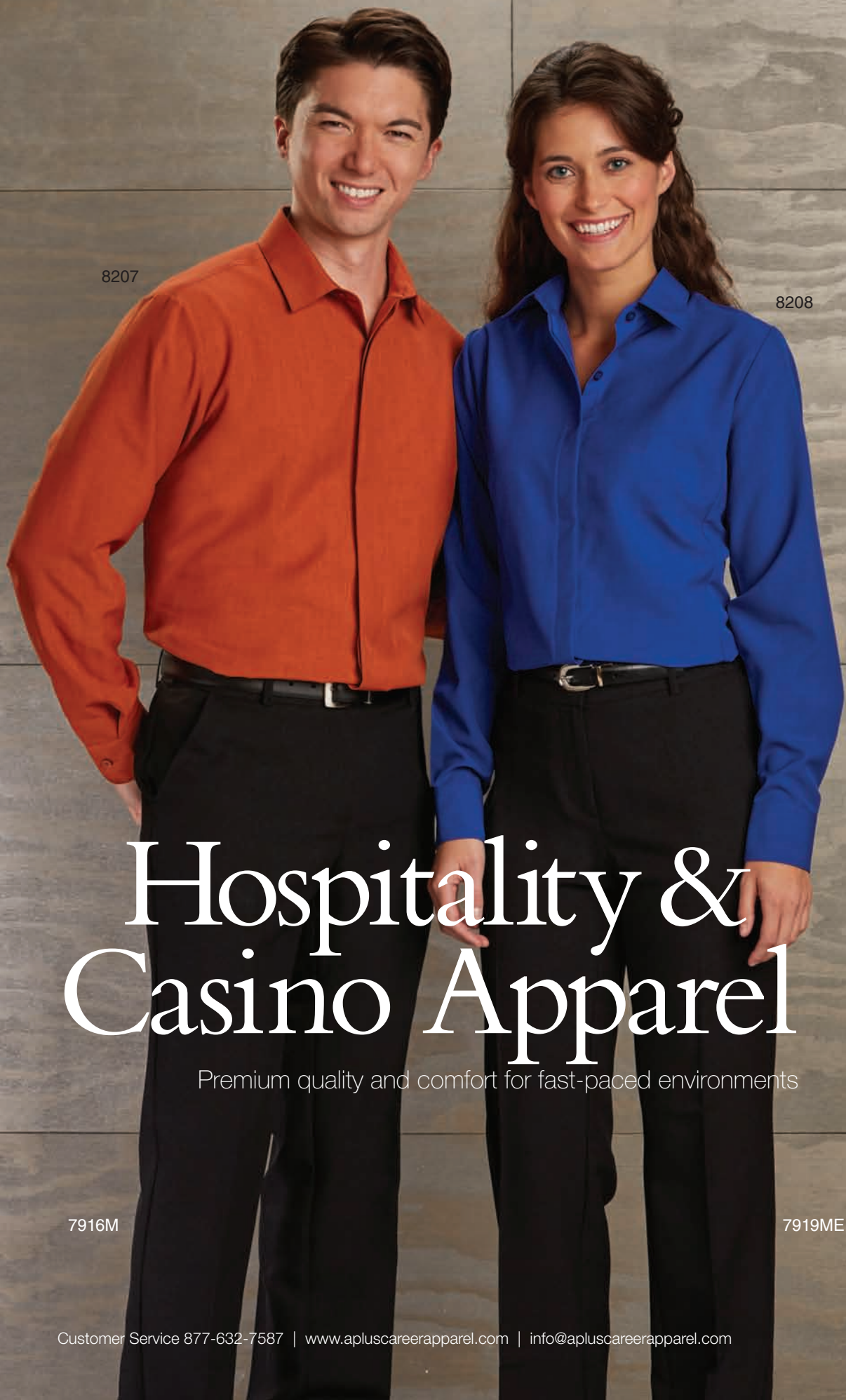
A+ Career Apparel meets the industry's demands better than any other supplier, and our high-performance products are backed by the best customer service in the business. It's been our focus for more than 40 years.

- Customers are loyal to A+ because of our high-value, no-hassle offering:
- One-year **Wear-Tested™ Guarantee** — an A+ exclusive
 - Superior A+ Fabrics™ in all products
 - Competitive pricing
 - Extensive in-stock inventory
 - Custom embroidery and decorating
 - Central location for fast delivery
 - In-house design, manufacturing, inventory management
 - U.S. manufacturing capabilities

Ready to elevate your brand with guaranteed-to-last corporate apparel from a proven American company? Make A+ your trusted casino and resort uniform partner.



If any garment does not stand up to one year of normal wear, we'll replace it. It's that simple.



Hospitality & Casino Apparel

Premium quality and comfort for fast-paced environments

A+ Shirts and Blouses:

- A+ Fabrics: 100% fourth-generation microfiber
- 4.0 oz. moisture-wicking polyester
- Stain, fade, and shrink resistant
- Wrinkle free
- Single-needle tailoring
- Covered button placket
- Adjustable two-button cuffs
- Easy care: machine wash and dry

8208 Women's Hospitality Blouse, Pointed Collar

8207 Men's Hospitality Shirt, Pointed Collar

- Permanent collar stays

Colors: Black, Buff, Celery, Charcoal, Chocolate, Cobalt, Red, Rust, Silver, Wheat, White, Wine

Women's Sizes: XS-4XL

Men's Sizes: Regular XXS-5XL; Tall XL-5XL

New 8210 Women's Hospitality Shirt, Stand-Up Collar

8209 Men's Hospitality Shirt, Stand-Up Collar

- Open neck for comfort

Colors: Black, Charcoal, Chocolate, Cobalt, Red, Rust, Wheat, Wine

Women's Sizes: XS-4XL

Men's Sizes: Regular XXS-5XL; Tall XL-5XL

A+ Hospitality Pants:

- A+ Fabrics: 100% polyester
- 5.15 oz. polyester
- Stain, fade, and shrink resistant
- Plain front
- High-quality, easy-pull YKK zipper
- Sturdy hook-and-eye closure
- Bar-tacked stress points
- Easy care: machine wash and dry

7917M Women's Hospitality Pants with Pockets

7916M Men's Hospitality Pants with Pockets

Color: Black

Women's Sizes: 2-30; 36" unhemmed

Men's Sizes: 28"-60" waist; 37" unhemmed

7919ME Women's Hospitality Pants, No Pockets

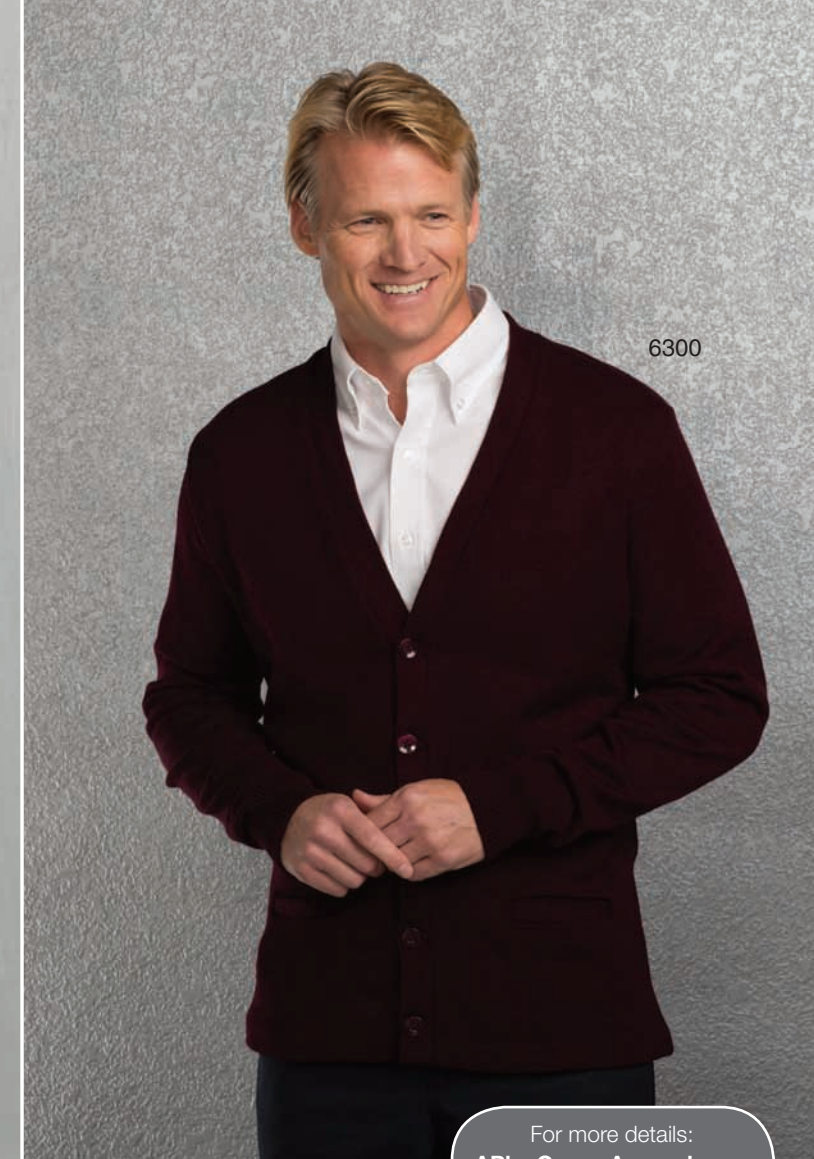
7918ME Men's Hospitality Pants, No Pockets

Color: Black

Women's Sizes: 2-30; 36" unhemmed

Men's Sizes: 28"-60" waist; 37" unhemmed





For more details:
APlusCareerApparel.com
Search by style number

A+ Sweaters:

- A+ Fabrics: 100% acrylic
- Stain, fade, shrink, and pill resistant
- Elasticized rib-knit cuffs for shape retention
- Soft to the touch
- Easy care: machine wash and dry

6300 Unisex Jersey Knit 5-Button V-Neck Pocket Cardigan

- 2 large pockets
- Hemmed bottom band

Colors: Black, Brown, Cardinal, Charcoal Heather, Green, Grey Heather, Khaki, Lipstick, Mayfair, Mulberry, Navy, Passion Pink, Powder Blue, Purple, Spruce Green, White, Wine
Sizes: S-5XL

6432 Men's Fine-Gauge V-Neck Pullover Sweater

6433 Men's Fine-Gauge V-Neck Pullover Sweater Vest *(not pictured)*

Colors: Black, Champagne, Lipstick, Navy
Sizes: S-5XL

6446 Women's Fine-Gauge V-Neck Pullover Sweater Vest

6444 Women's Fine-Gauge V-Neck Pullover Sweater *(not pictured)*
Colors: Black, Champagne, Lipstick, Navy, Passion Pink
Sizes: S-5XL

New 4997 Women's Fine-Gauge Zip-Front V-Neck Cardigan

- Hidden zipper with teardrop pull
- Hemmed sleeves and bottom band

Colors: Black, Navy
Sizes: S-3XL

6430 Women's Fine-Gauge 5-Button V-Neck Cardigan

- Can be worn as part of a twinset
- Colors: Black, Navy
Sizes: S-5XL

4918 Women's Fine-Gauge Short-Sleeve Shell

- Can be worn as part of a twinset
- Colors: Black, Champagne, Dutch Blue, Lipstick, Navy, Passion Pink, White
Sizes: S-5XL

Black	Brown	Cardinal	Charcoal Heather	Champagne
Dutch Blue	Green	Grey Heather	Khaki	Lipstick
Mayfair	Mulberry	Navy	Passion Pink	Powder Blue
Purple	Spruce Green	White	Wine	





Food & Beverage Apparel

High-performance uniforms for high-demand work

A+ Shirts and Blouses:

- Stain, fade, and shrink resistant
- Easy care: machine wash and dry

9431 Women's Short-Sleeve Poplin Blouse

9436 Women's Long-Sleeve Poplin Blouse *(not pictured)*

- A+ Fabrics: 65% polyester, 35% cotton
- 4.25 oz. poplin

Colors: Black, Blue, Dark Green, French Blue, Navy, Red, Royal, Tan, White

Sizes: S–3XL

8096 Men's Long-Sleeve Poplin Shirt

8091 Men's Short-Sleeve Poplin Shirt *(not pictured)*

- A+ Fabrics: 65% polyester, 35% cotton
- 4.25 oz. poplin

Colors: Black, Blue, Dark Green, French Blue, Navy, Red, Royal, Tan, White

Sizes: S–5XL

8061 Men's Short-Sleeve Oxford Shirt

8066 Men's Long-Sleeve Oxford Shirt *(not pictured)*

- A+ Fabrics: 60% cotton, 40% polyester
- 4.6 oz. oxford cloth

Colors: Blue, Blue Pinstripe, French Blue, Oxford Grey, White, Yellow

Sizes: S–5XL

9461 Women's Short-Sleeve Oxford Blouse *(not pictured)*

9466 Women's Long-Sleeve Oxford Blouse *(not pictured)*

- A+ Fabrics: 60% cotton, 40% polyester
- 4.6 oz. oxford cloth

Colors: Blue, French Blue, Oxford Grey, Pink, White, Yellow

Sizes: XS–5XL

9353 Women's Three-Quarter Sleeve Broadcloth Blouse

- A+ Fabrics: 65% polyester, 35% cotton

Colors: Black, Dark Green, French Blue, Navy, Red, Royal, White, Wine

Sizes: S–3XL

Black	Blue	Blue Pinstripe	Dark Green
French Blue	Navy	Oxford Grey	Pink
Red	Royal	Tan	White
Wine	Yellow		

For more details:
APlusCareerApparel.com
Search by style number



8950

9950

7022M

7491M

A+ Polos and Pants:

- Stain, fade, and shrink resistant
- Quality construction
- Easy care: machine wash and dry

8950 Men's Moisture-Management Polo Shirt

- A+ Fabrics: 100% polyester
- 4.25 oz. fabric

Colors: Black, Blueberry, Dark Green, Gold, Khaki, Navy, Red, Royal, Steel, White
Sizes: S-5XL

9950 Women's Moisture-Management Polo Shirt

- A+ Fabrics: 100% polyester
- 4.25 oz. fabric

Colors: Black, Blueberry, Dark Green, Gold, Navy, Passion Pink, Red, Royal, Steel, White
Sizes: S-3XL

8778 Men's Moisture-Management Polo Shirt, Cotton Blend

- A+ Fabrics: 64% combed ring-spun cotton, 36% polyester
- 5.35 oz. fabric
- Fine waffle knit

Colors: Black, Dark Royal, French Blue, Navy, Red, White
Sizes: S-5XL

7022M Men's Double-Pleated Relaxed Fit Twill Pants

- A+ Fabrics: 65% polyester, 35% cotton
- 8.25 oz. Brushed Gusto Plus twill

Colors: Black, Khaki, Navy
Waist sizes: 28"-60"
Hemmed inseams: 30", 32", 34"
Unhemmed: 37"

7491M Women's Plain Front Classic Fit Twill Pants

- A+ Fabrics: 65% polyester, 35% cotton
- 7.0 oz. Brushed Centurion twill

Colors: Black, Khaki, Navy
Sizes: 2-30

7120M Men's Plain Front Classic Fit Twill Pants

- A+ Fabrics: 65% polyester, 35% cotton
- 8.25 oz. Gusto Plus twill

Colors: Black, Khaki, Navy
Waist sizes: 28"-60"
Hemmed inseams: 30", 32", 34"
Unhemmed: 37"

Black

Khaki

Navy

8778



7120M

For more details:
APlusCareerApparel.com
Search by style number





A+ Piqué Polo Shirts:

- A+ Fabrics: 60% combed ring-spun cotton, 40% polyester
- 7.0 oz. fabric for white, 6.4 oz. fabric for colors
- Stain, fade, and shrink resistant
- Cotton-rich comfort, plus durability
- Easy care: machine wash and dry

8766 Men's/Unisex Piqué Polo Shirt, Long Sleeves, Rib-Knit Cuffs

Colors: Ash Grey, Black, Blue, Cardinal, Cornsilk, Dark Green, Dark Navy, Dark Royal, Khaki, Maize, Navy, Pink, Red, Tulane Forest Lane Green, Tulane Gold, Tulane Jade, Tulane Kelly Green, Tulane Orange, Tulane Purple, White, Wine, Yellow
Sizes: S-5XL

9715 Women's Piqué Polo Shirt, Rib-Knit Cuffs

Colors: Black, Blue, Dark Green, Navy, Red, White, Wine, Yellow
Sizes: S-3XL

8760 Men's/Unisex Piqué Polo Shirt, Short Sleeves, Hemmed

Colors: Ash Grey, Black, Blue, Cardinal, Dark Green, Dark Navy, Dark Royal, Khaki, Maize, Navy, Pink, Red, Tulane Forest Lane Green, Tulane Gold, Tulane Jade, Tulane Kelly Green, Tulane Orange, Tulane Purple, White, Wine, Yellow
Sizes: S-5XL

A+ Pants:

- A+ Fabrics: 65% polyester, 35% cotton
- Stain, fade, and shrink resistant
- Quality construction
- Easy care: machine wash and dry

7120M Men's Plain Front Classic Fit Twill Pants

- 8.25 oz. Gusto Plus twill

Colors: Black, Khaki, Navy

Waist sizes: 28"-60"

Hemmed inseams: 30", 32", 34"

Unhemmed: 37"

7491M Women's Plain Front Classic Fit Twill Pants

- 7.0 oz. Brushed Centurion twill

Colors: Black, Khaki, Navy

Sizes: 2-30

7021M Men's Plain Front Relaxed Fit Twill Pants

- 8.25 oz. Gusto Plus twill

Colors: Black, Khaki, Navy

Waist sizes: 28"-60"

Hemmed inseams: 30", 32", 34"

Unhemmed: 37"



For more details:
APlusCareerApparel.com
Search by style number



Valet Apparel

Ease and durability for workers on the go

A+ Pants and Shorts:

- A+ Fabrics:
65% polyester,
35% cotton
- Stain, fade, and
shrink resistant
- Quality construction
- Easy care: machine
wash and dry

7334M Women's Cargo Shorts

- 7.0 oz. Brushed Centurion twill
- Colors: Black, Khaki, Navy
Sizes: 2-30

7354M Men's Cargo Shorts

- 8.25 oz. Gusto Plus twill
 - Additional room in seat and thighs
for comfort
- Colors: Black, Khaki, Navy
Sizes: 28"-60" waist

7334M

7354M

7188M

7180M

7188M Men's Cargo Pants

- 8.25 oz. Gusto Plus twill
 - Additional room in seat and thighs
for comfort
- Colors: Black, Khaki, Navy
Sizes: 28"-60" waist
Hemmed inseams: 30", 32", 34"
Unhemmed: 37"

7180M Women's Cargo Pants

- 7.0 oz. Brushed Centurion twill
- Colors: Black, Khaki, Navy
Sizes: 2-30

For more details:
APlusCareerApparel.com
Search by style number

7120M

7033M

**7120M Men's Plain Front Classic
Fit Twill Pants**

- 8.25 oz. Gusto Plus twill
 - Additional room in seat and thighs
for comfort
- Colors: Black, Khaki, Navy
Waist sizes: 28"-60"
Hemmed inseams: 30", 32", 34"
Unhemmed: 37"

**7033M Men's Plain Front Relaxed
Fit Twill Long Shorts**

- 7.0 oz. Brushed Centurion twill
 - Bar-tacked stress points
- Colors: Khaki, Navy
Waist sizes: 28"-60"

Black

Khaki

Navy

**7493M Women's Plain Front Classic
Fit Twill Shorts**

- 7.0 oz. Brushed Centurion twill
 - Comfortable fit, popular style
 - Hook-and-eye closure
- Colors: Black, Khaki, Navy
Sizes: 2-30

**7491M Women's Plain Front Classic
Fit Twill Pants**

- 7.0 oz. Brushed Centurion twill
 - Hook-and-eye closure
- Colors: Black, Khaki, Navy
Sizes: 2-30

7493M

7491M





6285

6225

A+ Outerwear:

- Stain, fade, shrink, and pill resistant
- Easy-pull zipper
- Easy care: machine wash and dry

6285 Unisex Lightweight Nylon Jacket

- A+ Fabrics: 100% water-repellant polyester shell
 - 100% polyester upper-back mesh lining
 - Shock-cord drawstring at hem
 - Single-ply hood, same fabric as body
- Colors: Black Body/Khaki Trim, Khaki Body/Black Trim, Navy Body/Khaki Trim
Sizes: S-5XL

Black/Khaki	Khaki/Black	Navy/Khaki
-------------	-------------	------------

6225 Unisex Medium-Weight Nylon Jacket

- A+ Fabrics: 100% water-repellant polyester shell
 - Fleece body lining: 76% polyester, 12% rayon, 12% cotton
 - Sleeve lining: 100% nylon
 - Shock-cord drawstring at hem
 - Zip-off fleece-lined hood
- Colors: Black, Green, Navy, Red, Wine
Sizes: S-5XL

Black	Green	Navy
Red	Wine	

6295 Unisex Quarter-Zip Fleece Sweatshirt

- A+ Fabrics: 60% combed ring-spun cotton, 40% polyester
 - 8.5 oz. knit
- Colors: Ash Grey, Black, Hunter Green, Navy, Red, Wine
Sizes: S-3XL

Ash Grey	Black	Hunter Green
Navy	Red	Wine

For more details:
APlusCareerApparel.com
Search by style number



6295



8006

8002

7000M

7022M
See pages 10-11

Security Apparel

Unsurpassed comfort and quality for safety and surveillance professionals



5953

5955

7021M
See pages 12-13

7916M
See pages 4-5

For more details:
APlusCareerApparel.com
Search by style number

A+ Aviator Shirts:

- Stain, fade, and shrink resistant
- Outstanding value
- Easy care: machine wash and dry

8006 Men's Poplin Long-Sleeve Aviator Shirt

8002 Men's Poplin Short-Sleeve Aviator Shirt

- A+ Fabrics: 65% polyester, 35% cotton
 - 4.25 oz. poplin
 - 2 epaulets
 - Pencil/pen openings on pocket flaps
 - Double-yoke back with center box-pleat
- Colors: Blue, White
Sizes: XS-5XL

A+ Commando Sweaters:

- Stain, fade, shrink, and pill resistant
- Easy care: machine wash and dry

5953 Unisex 2x2 Heavy Rib V-Neck Commando Sweater, 100% Acrylic
5955 Unisex Jersey V-Neck Commando Sweater, 100% Acrylic

- A+ Fabrics: 100% acrylic
 - Twill epaulets, shoulder patches, and elbow patches
 - Nameplate tab and badge tab included
- Colors: Black, Brown, Police Navy
Sizes: S-5XL

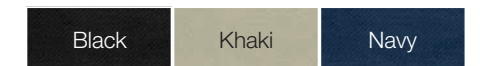


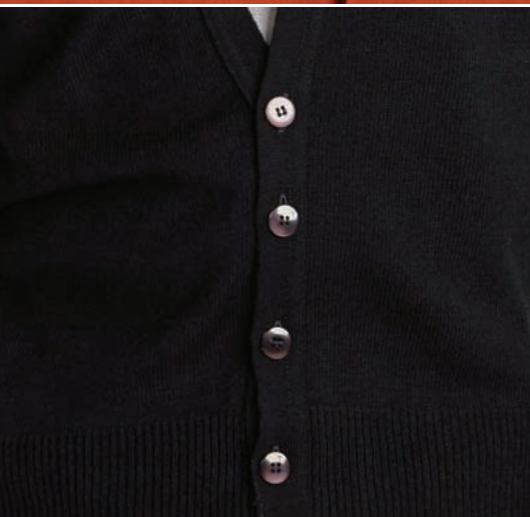
A+ Pants:

- Stain, fade, and shrink resistant
- Easy care: machine wash and dry

7000M Men's Double-Pleated Classic Fit Twill Pants

- A+ Fabrics: 65% polyester, 35% cotton
 - 8.25 oz. Gusto Plus twill
- Colors: Black, Khaki, Navy
Waist sizes: 28"-60"
Hemmed inseams: 30", 32", 34"
Unhemmed: 37"





Career Apparel

Visit APlusCareerApparel.com to see the full line of A+ products.

Corporate Headquarters: Burlingame, California
Manufacturing & Distribution Center: Star City, Arkansas

Customer Service: 877-632-7587
7:00 AM-7:00 PM Central Time

Fax: 888-628-9020

info@apluscareerapparel.com
www.apluscareerapparel.com
Facebook: A+Careerwear

